

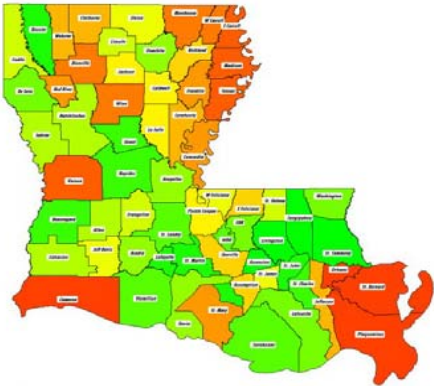


Redistricting in Louisiana  
Past & Present  
**Regional Educational  
Presentation**  
Shreveport  
February 1, 2010



To get more information regarding the Louisiana House of Representatives redistricting process go to:

[http://house.louisiana.gov/H\\_Redistricting2011](http://house.louisiana.gov/H_Redistricting2011)



Fan “Louisiana House of Representatives Redistricting” on Facebook

This PowerPoint presentation is available now at:

[http://house.louisiana.gov/H\\_Redistricting2011/default\\_RedistMeetings2011.htm](http://house.louisiana.gov/H_Redistricting2011/default_RedistMeetings2011.htm)

# 2010 Census Presentation

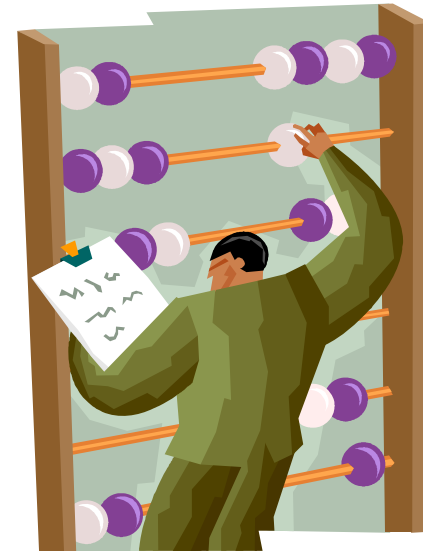
U. S. Census Bureau

Lillian Priest

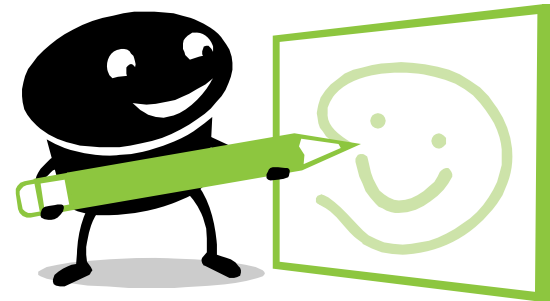
Partnership Specialist

# What is Redistricting?

- Reapportionment means



- Redistricting means



# Districts

- House & Senate districts
- Congressional districts
- P.S.C. districts
- B.E.S.E. districts
- Supreme Court districts
- Election districts of lower courts



# Legislature's Responsibility

- Redistricting is undertaken every 10 years following the federal decennial census
- New redistricting plans are based on the latest decennial population counts



# Why?

- Apportionment of Congress
- Article III, Section 6 of the Constitution of La.
- 14<sup>th</sup> Amendment of the U.S. Constitution



# LEGAL ISSUES

- U. S. Constitution
- Voting Rights Act of 1965
- Louisiana Constitution
- Louisiana Statutes





# LEGAL ISSUES

## U. S. Constitution

- **Population Equality**
  - One Person, One Vote



# LEGAL ISSUES

## Population Equality -- One Person, One Vote

- Congress
  - Article I, Section 2 and 14<sup>th</sup> Amendment
    - Representatives ... apportion among the ... states ... according to their respective numbers
    - Districts must be as nearly **equal in population as practicable**
    - Deviation and overall range: close to zero as “practicable”

# LEGAL ISSUES

Population Equality -- One Person, One Vote

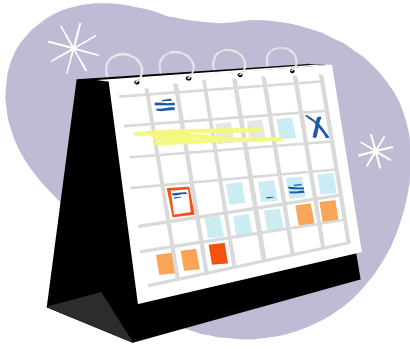
## State Legislative Jurisdictions

- 14<sup>TH</sup> Amendment--Equal Protection Clause
  - Districts substantially equal in population
  - A maximum overall deviation range of  $\pm 5\%$

# LEGAL ISSUES

## Louisiana Constitution

- LOUISIANA LEGISLATURE
  - Article III, Section 1: Single Member Districts
  
  - Article III, Section 3: no more than 39 Senators; 105 Representatives
  
  - Article III, Section 6:
    - Legislature must be redistricted by Dec. 31, 2011 or any elector can petition the Supreme Court to do it
    - Must use Census Population Data



# Proposed Timeline For Redistricting

- **April 1, 2010:** Census Day
- **December 2010:** President of the U.S. notified of the population of each state
- **January 2011:** State Informed About Number of Congressional Seats allocated to Louisiana
- **February \_\_, 2011:** Census Data is delivered to the Legislature
- **February \_\_, 2011:** Committee hearing on Census data
- **February \_\_-March \_\_, 2011:** Public Hearings around the state

# Timeline For Redistricting (Cont.)

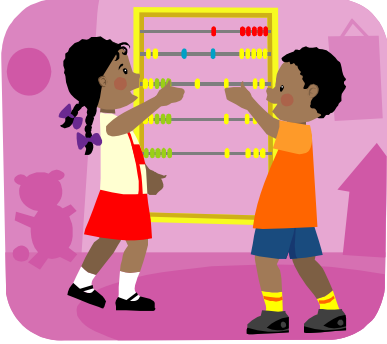
- **April \_\_\_ – \_\_, 2011:** Proposed Extraordinary Session to establish new Legislative, Congressional, Supreme Court, Public Service Commission, and BESE districts
- **April 25 - June 23, 2011:** Regular Session
- **End of April-May 2, 2011:** Proposed deadline for Submission of Plans for preclearance
- **August 29, 2011:** Deadline for SOS to receive notice of preclearance of Legislative plans (R.S. 18:1942)
- **September 6 - 8, 2011:** Qualifying dates for Legislative & BESE elections
- **October 22, 2011:** Primary Election for members of the legislature and elected BESE members
- **November 19, 2011:** General Election





# Timeline For Redistricting (Cont.)

- **December 31, 2011:** Article III, §6 deadline for the Legislature to redistrict itself
- **January 9, 2012:** Inauguration Day
- **June 27, 2012:** Deadline for Secretary of State to receive notice of preclearance of plans for Congress, Public Service Commission, Supreme Court, and other judgeships for inclusion on fall ballot (R.S. 18:1942)
- **July 5, 6, & 9, 2012:** Qualifying for regular elections
- **August 25, 2012:** First Party Primary for Congress
- **October 6, 2012:** Open Primary Election for Supreme Court and Public Service Commission (staggered terms) and Second Party Primary for Congress
- **November 6, 2012:** General Election



# The 2010 Census

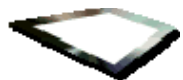
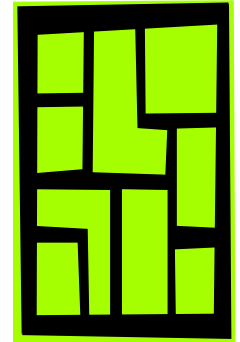
- **Primary Purpose:** A count of persons in each state as of April 1, 2010, for the apportionment of Representatives in Congress
- **Secondary Purpose: Redistricting**
  - Public Law 94-171 requires the Census Bureau to report population data by various geographic areas
- **Other Purposes:** Making public policy decisions and fund allocation



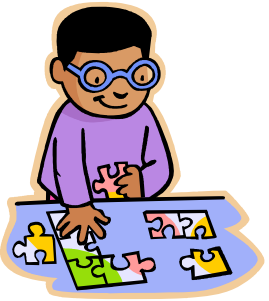


# Census Population is reported by Geographic Area

- Parishes
- Legislative districts
- Municipalities & Census Designated Places
  - Census Tracts
  - Voting Districts (Precincts)
  - Census Block Groups
  - Census Blocks



# Building Blocks For Legislatively Drawn Plans



- The Legislature uses precincts as the building blocks for redistricting plans
- Parish Governing Authorities are required to use census block boundaries as the boundaries for precincts

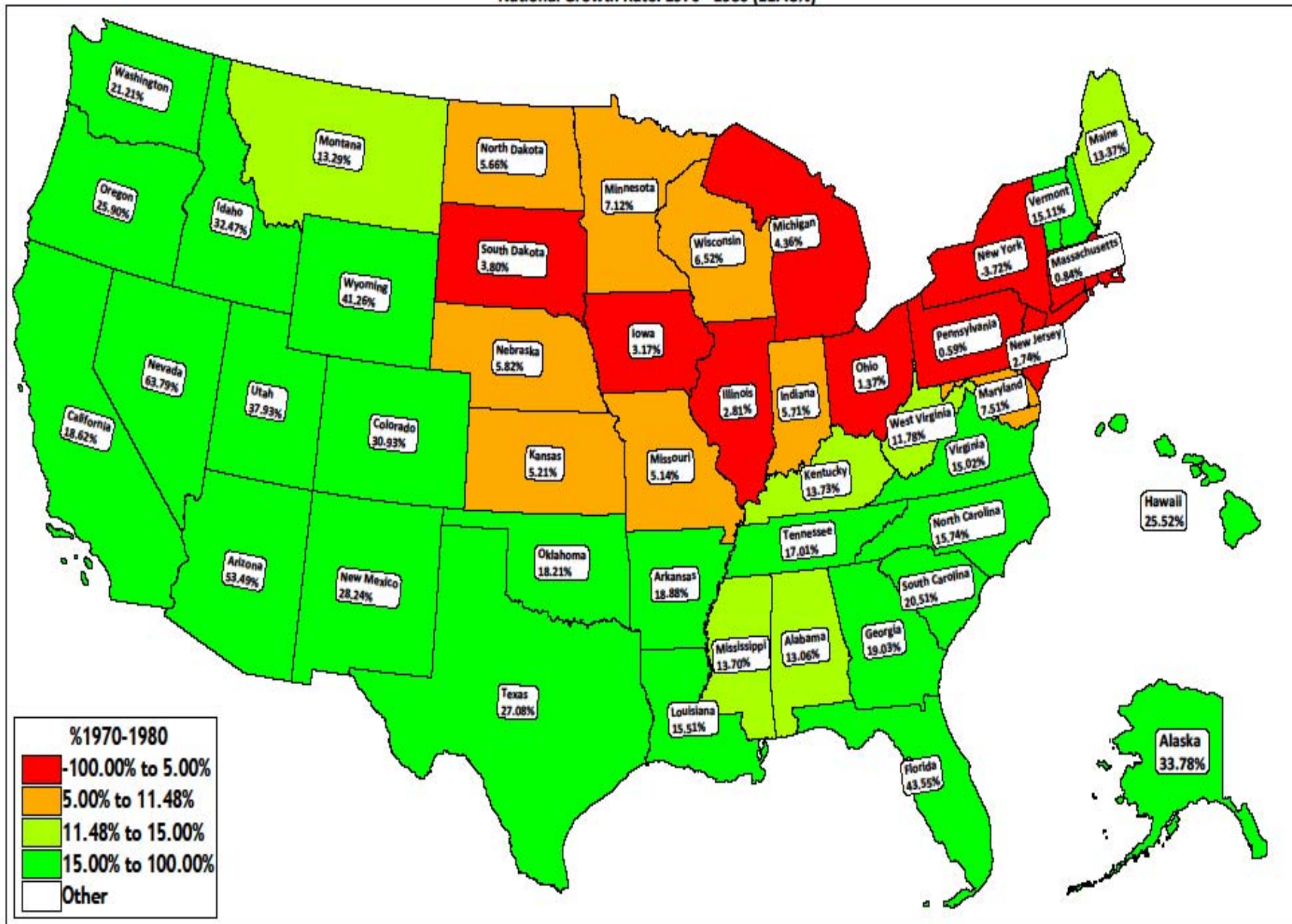


# P.L. 94-171 Data Includes the Following Tabulations By Precinct

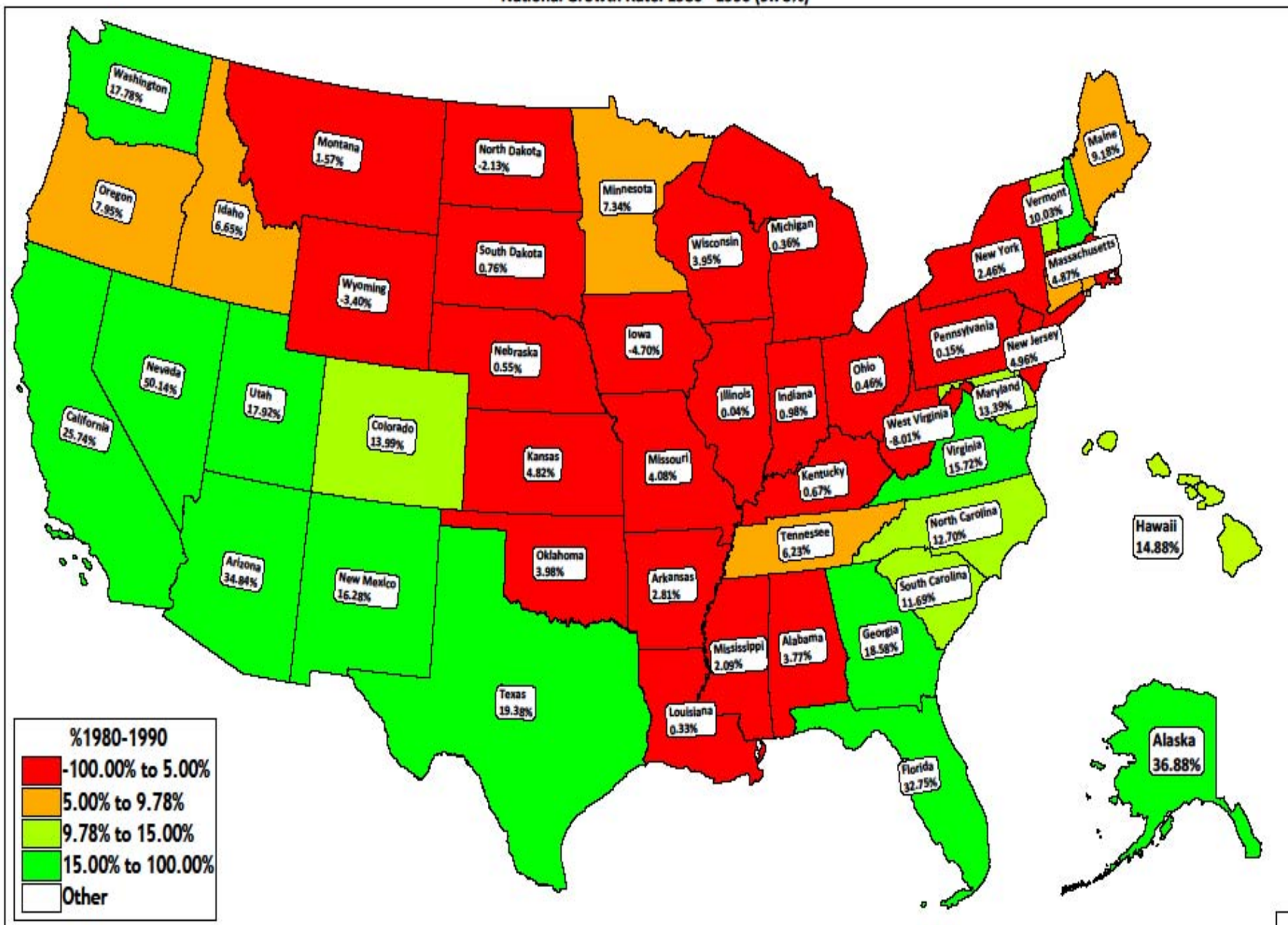


- **Total Population**
- **Voting Age Population (over 18)**
- **Racial Data**

National Growth Rate: 1970 - 1980 (11.48%)

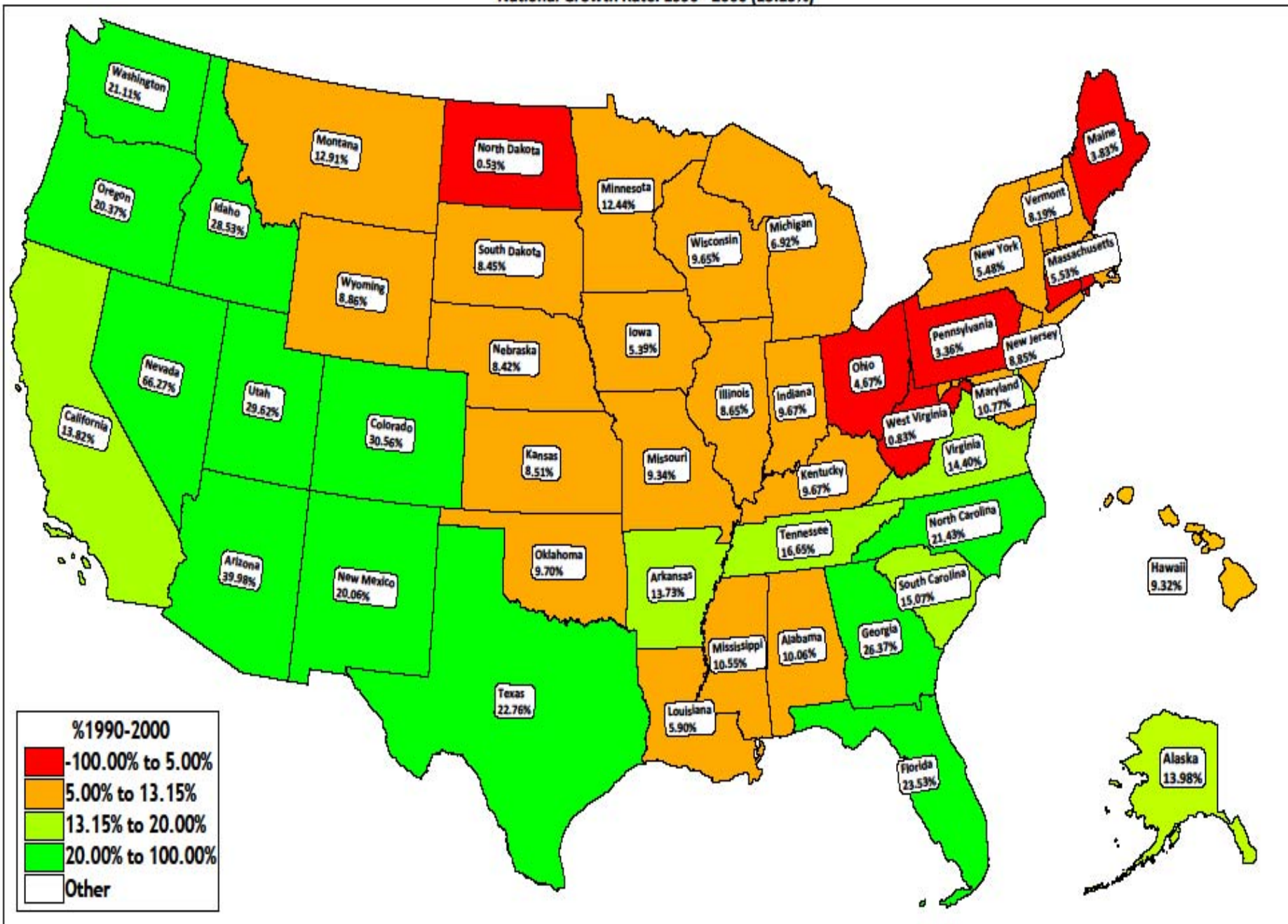


National Growth Rate: 1980 - 1990 (9.78%)

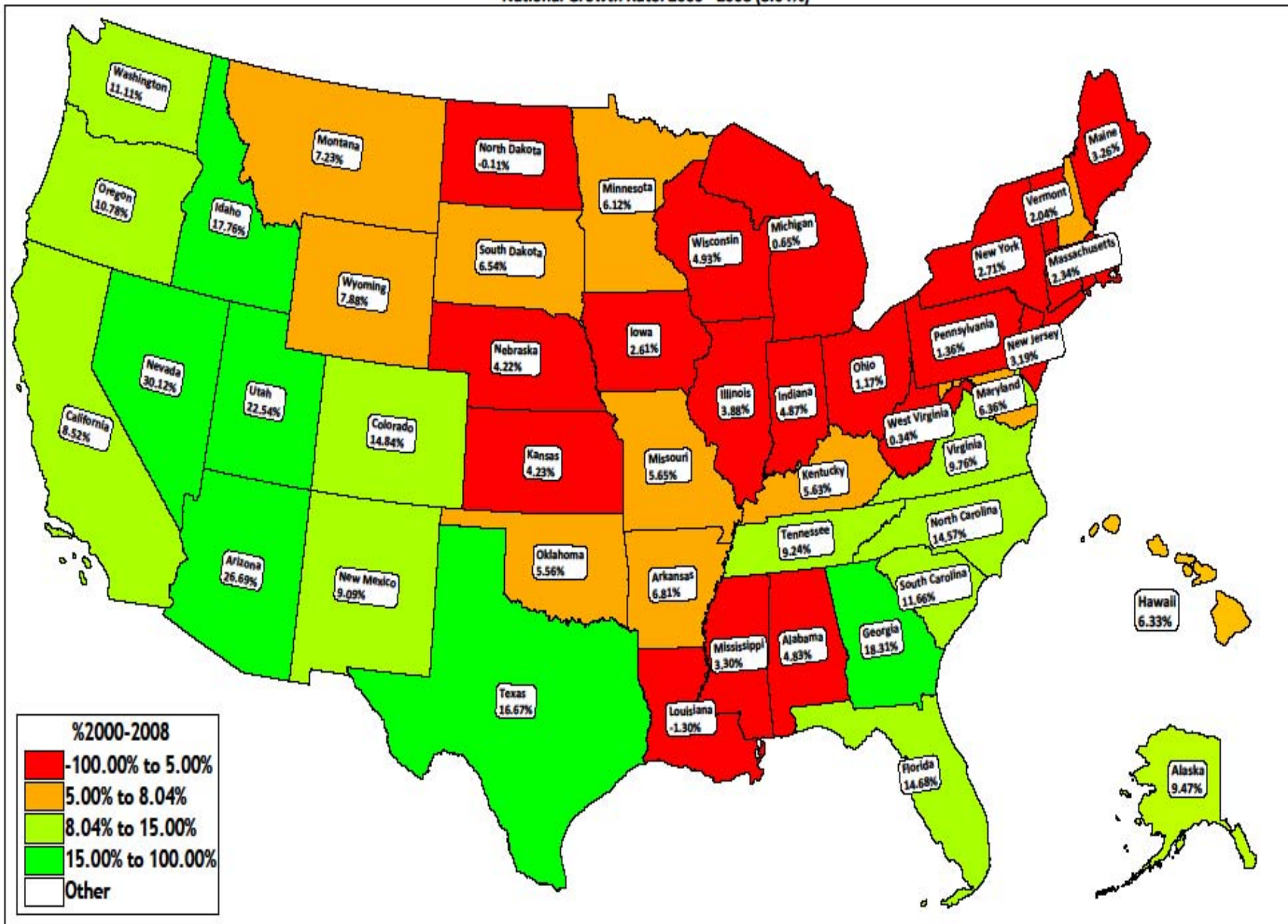




National Growth Rate: 1990 - 2000 (13.15%)

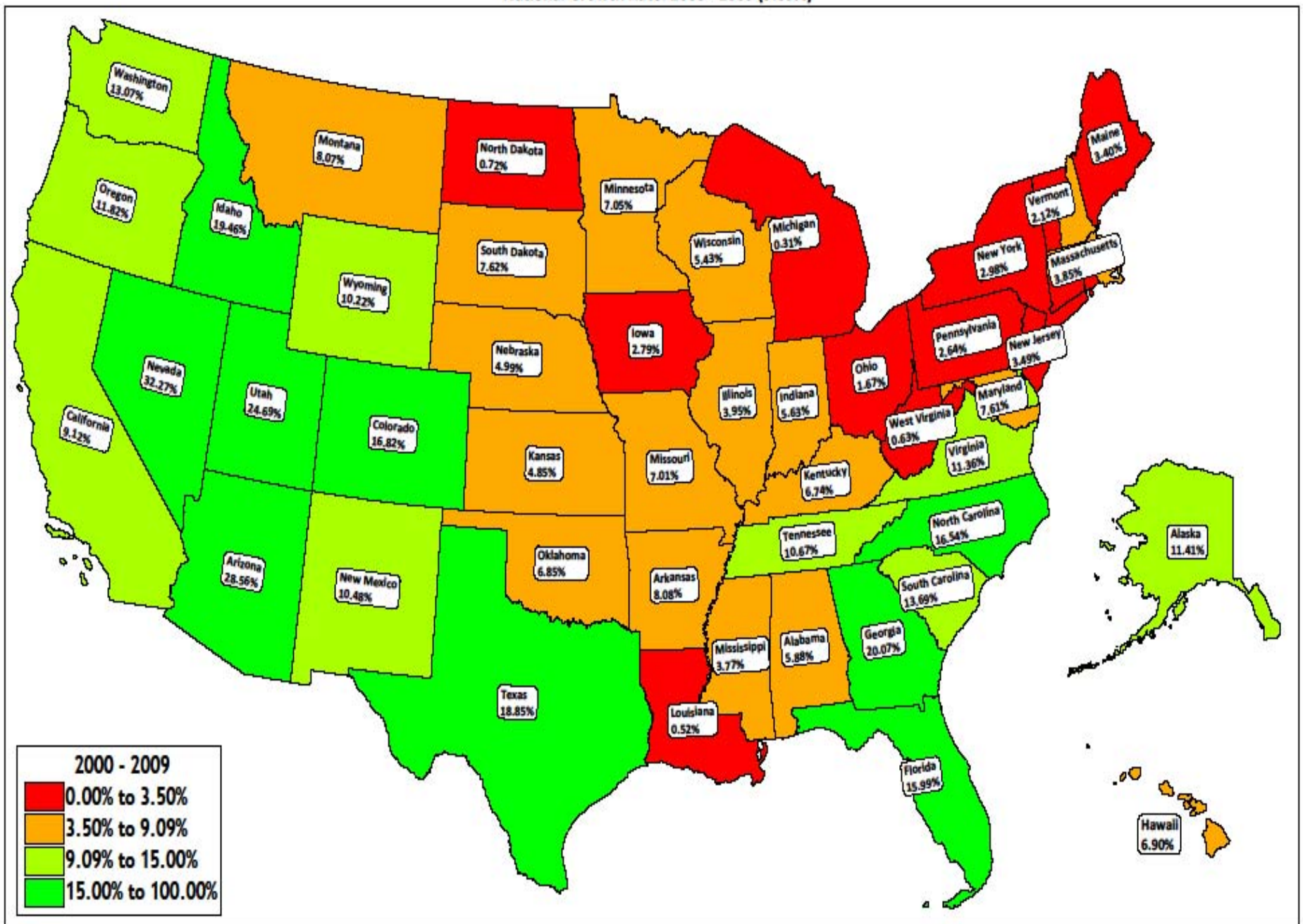


National Growth Rate: 2000 - 2008 (8.04%)





National Growth Rate: 2000 - 2009 (9.09%)





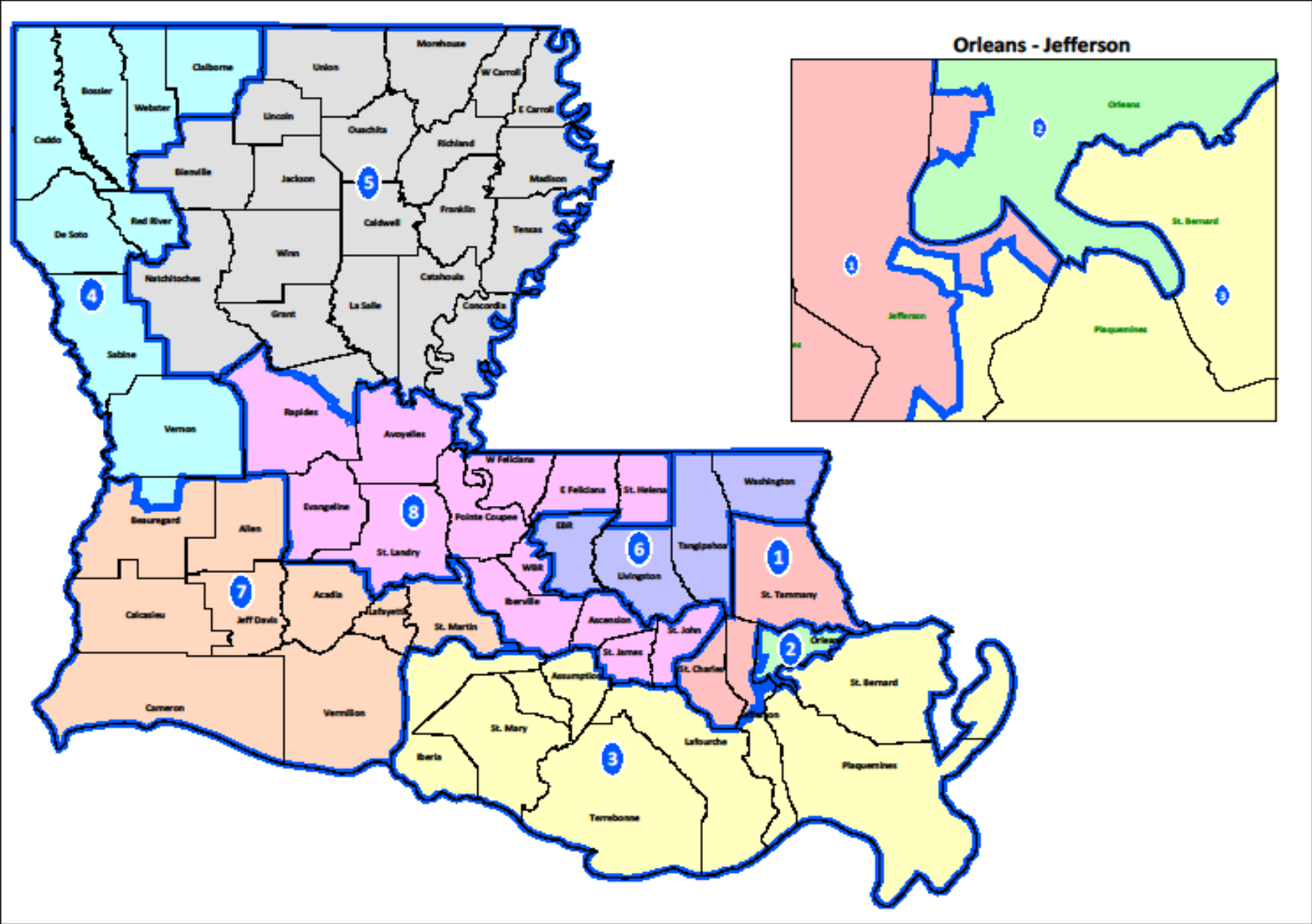
# Congress

## Ideal Population Thru the Decades\*

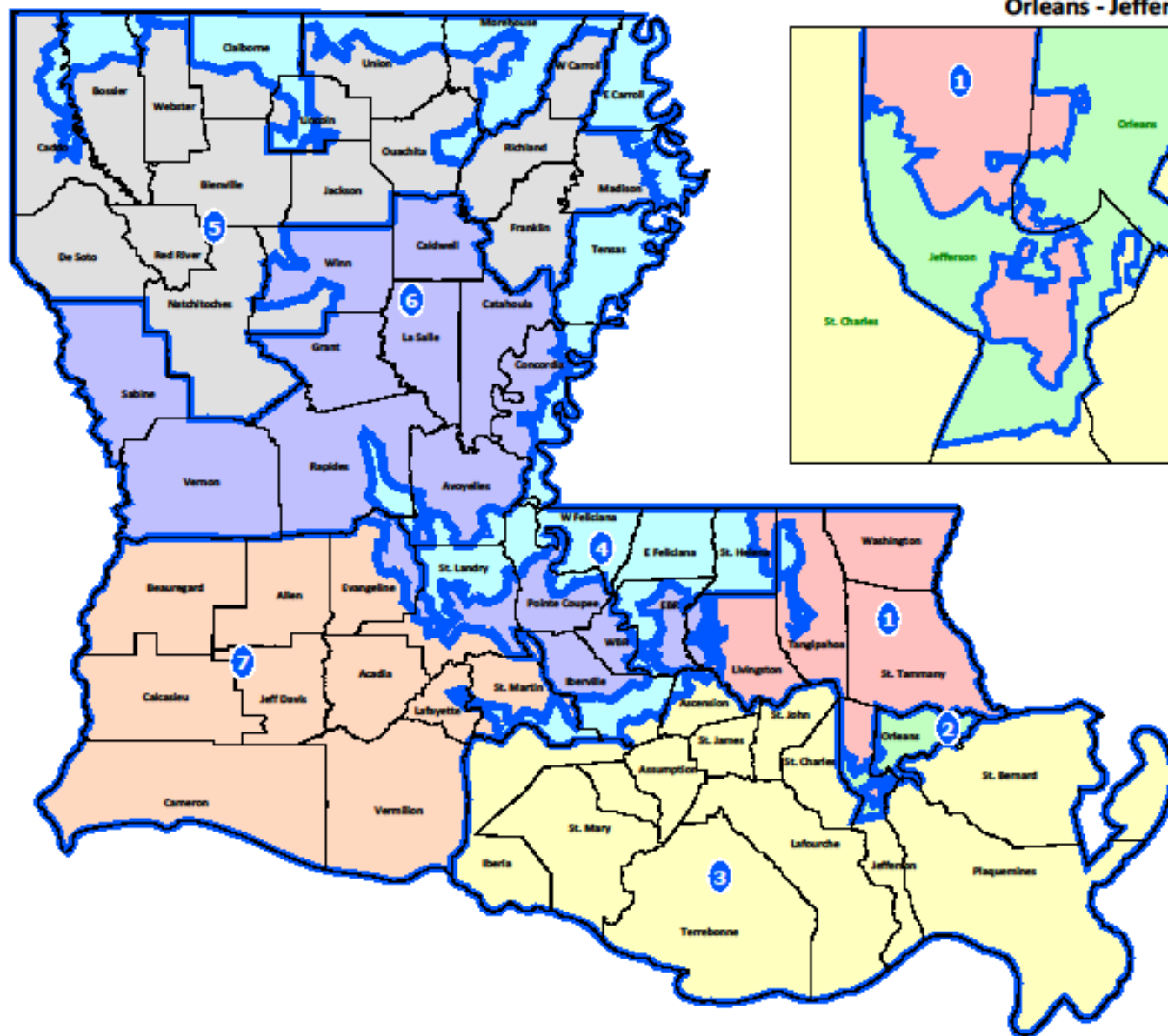
\*The 2009 figure is based upon the 2009 Census Estimate and the 2010 figure is based upon the Census Projection

<b>Decade</b>	<b>Districts</b>	<b>Ideal Population</b>
<b>1980</b>	<b>8</b>	<b>525,738</b>
<b>1990</b>	<b>7</b>	<b>602,853</b>
<b>2000</b>	<b>7</b>	<b>638,425</b>
<b>2009*</b>	<b>7</b>	<b>641,725</b>
<b>2009*</b>	<b>6</b>	<b>748,679</b>
<b>2010*</b>	<b>7</b>	<b>667,526</b>
<b>2010*</b>	<b>6</b>	<b>778,780</b>

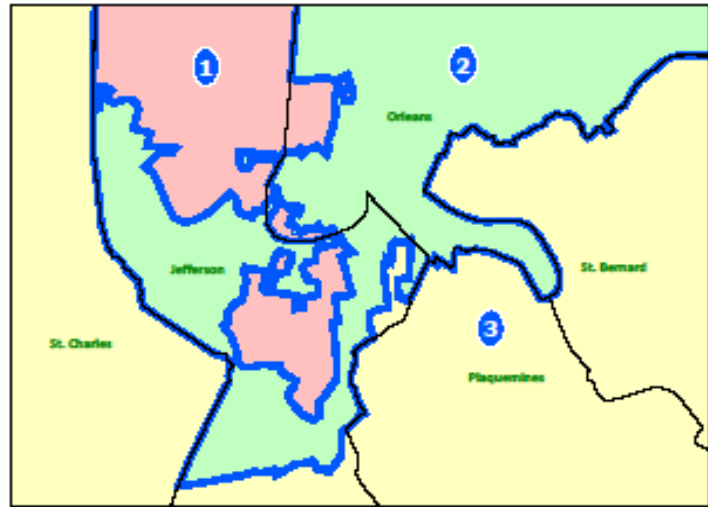
# Congress - 1980



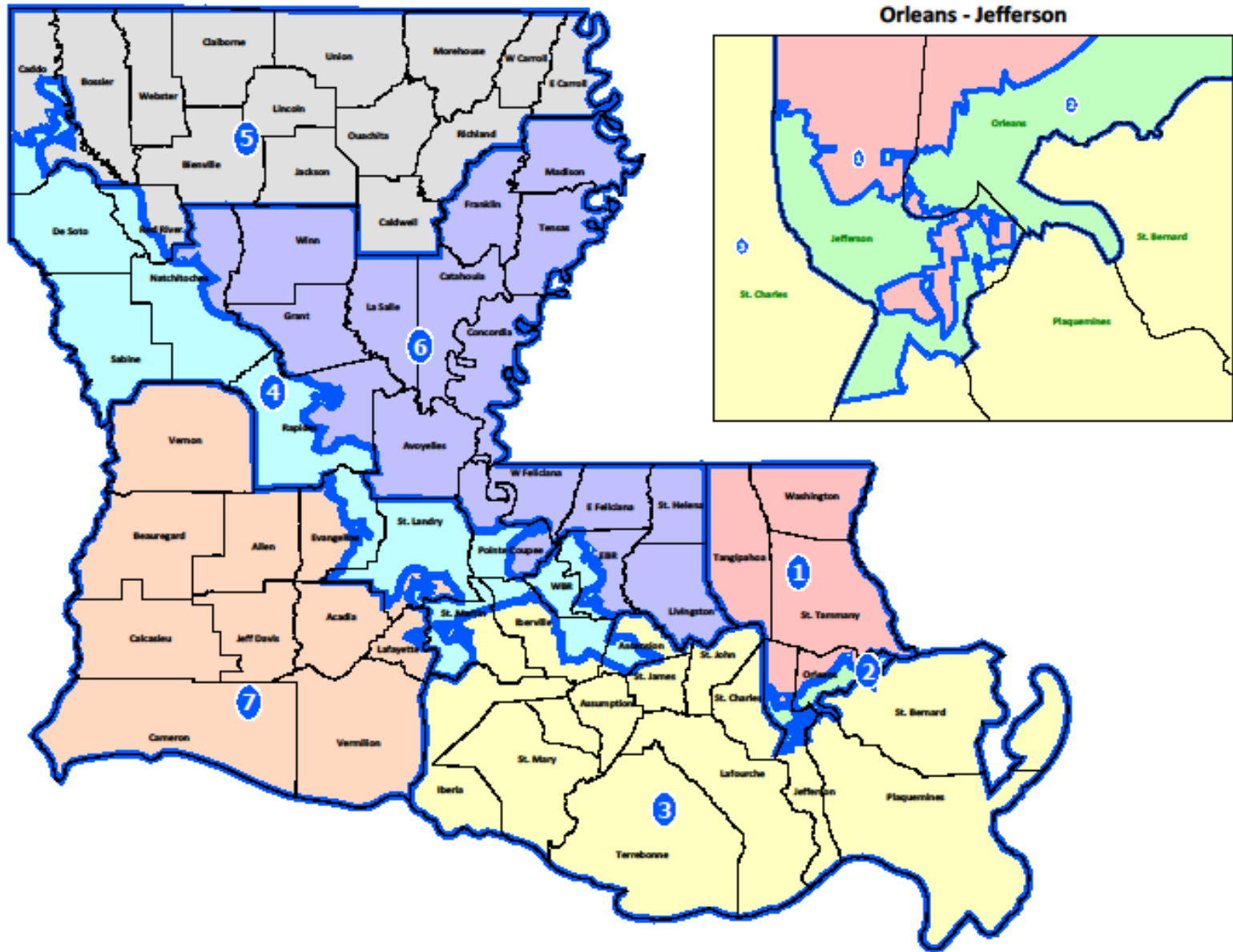
# Congress - 1992



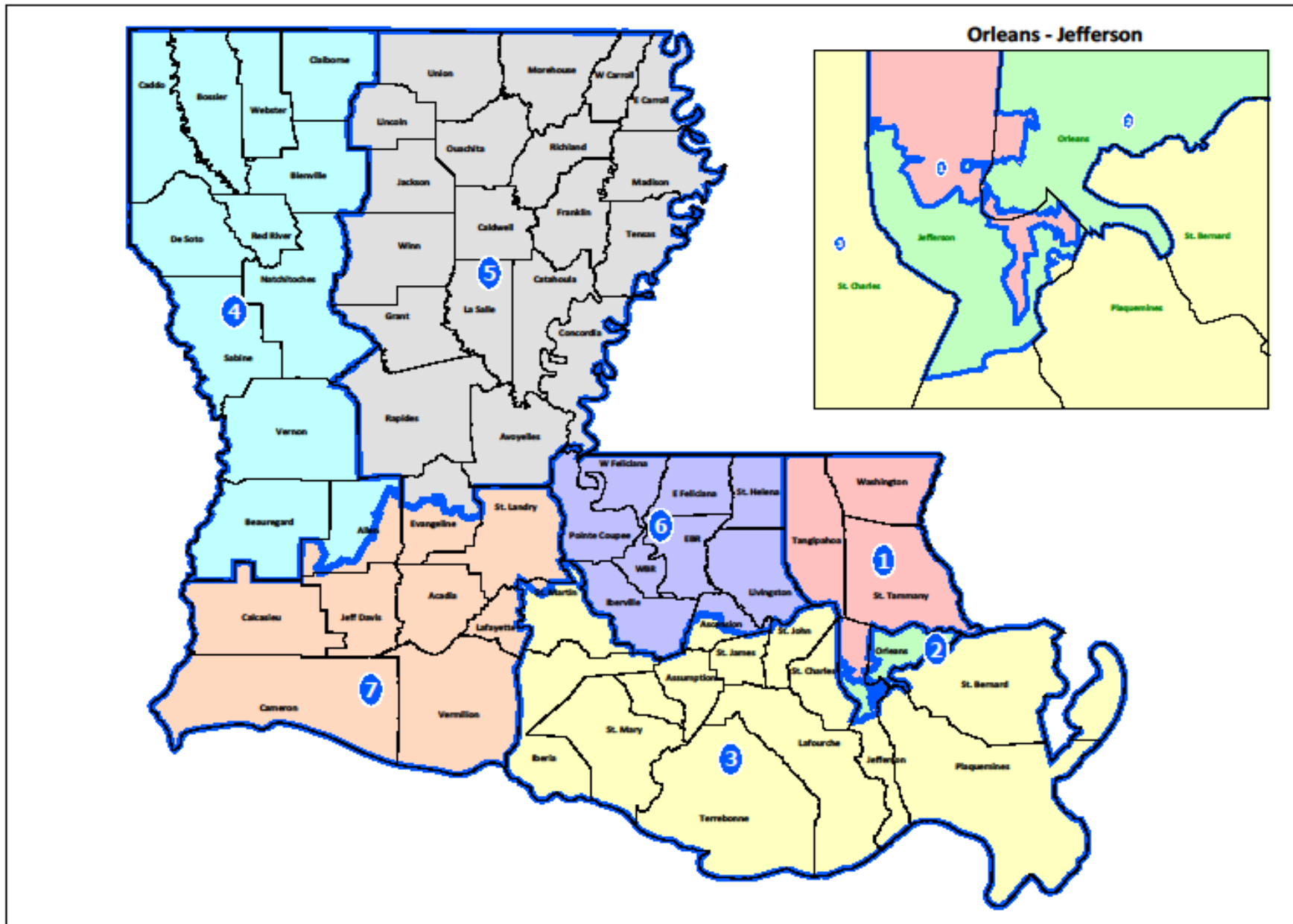
### Orleans - Jefferson



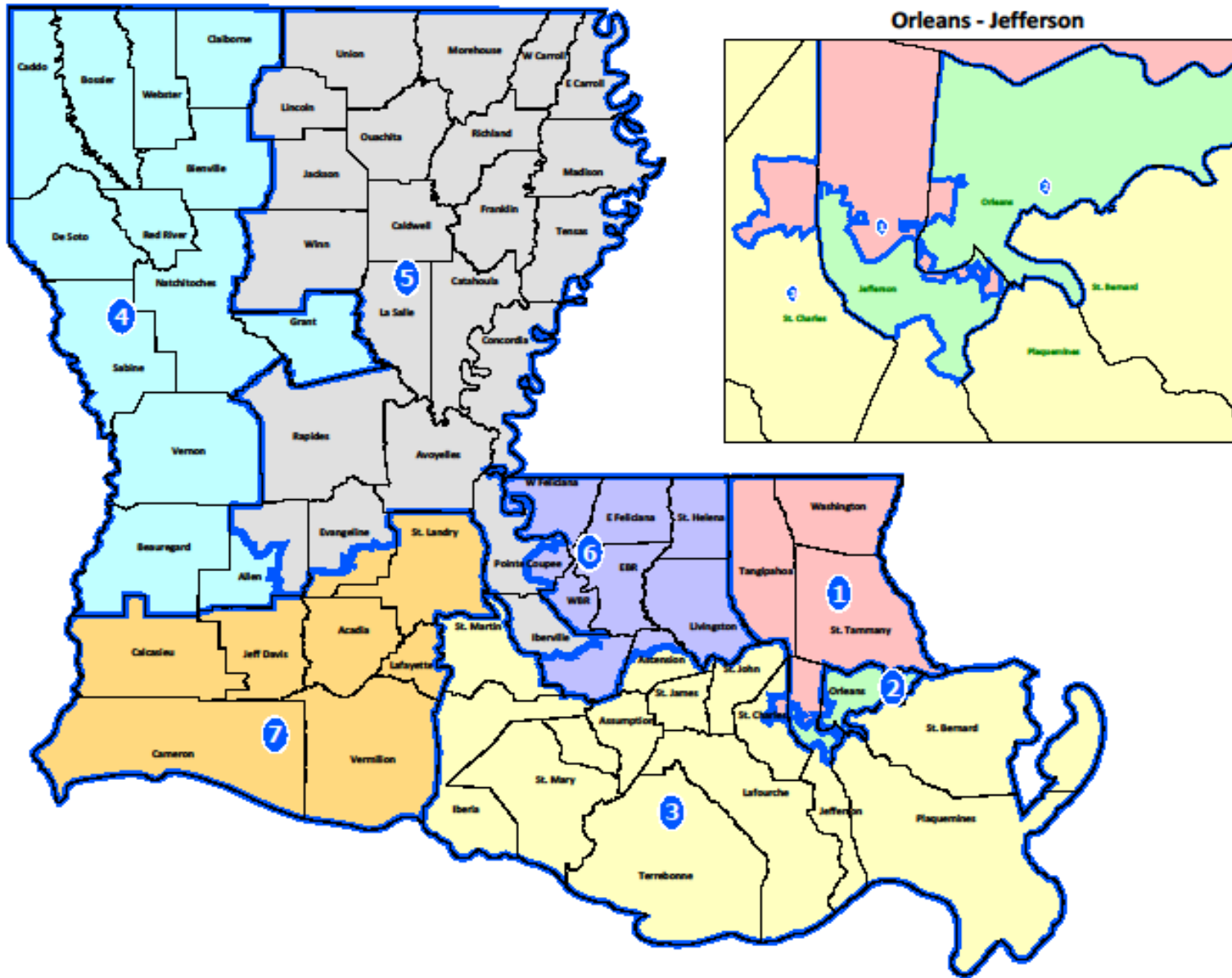
# Congress - 1994



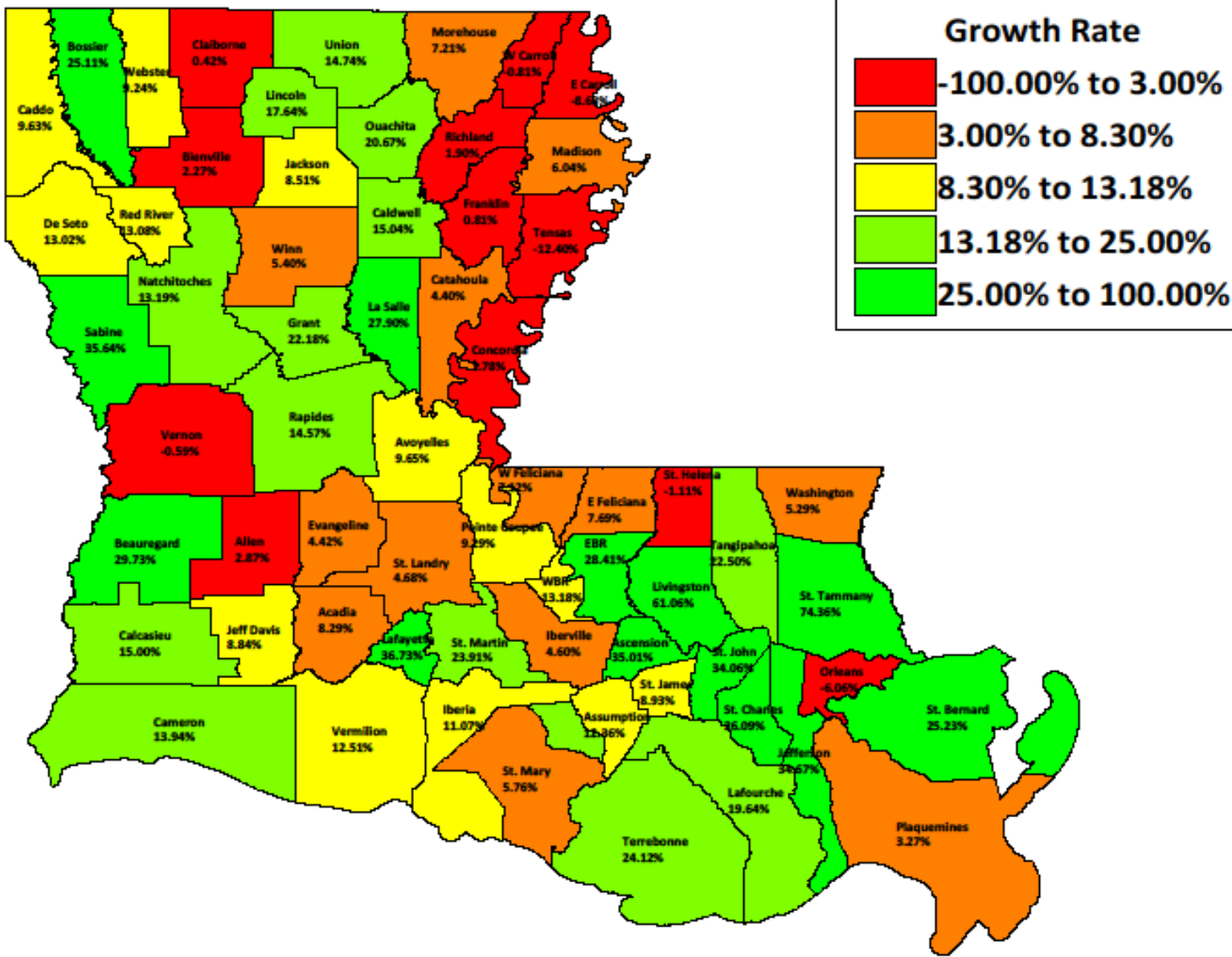
# Congress - 1996



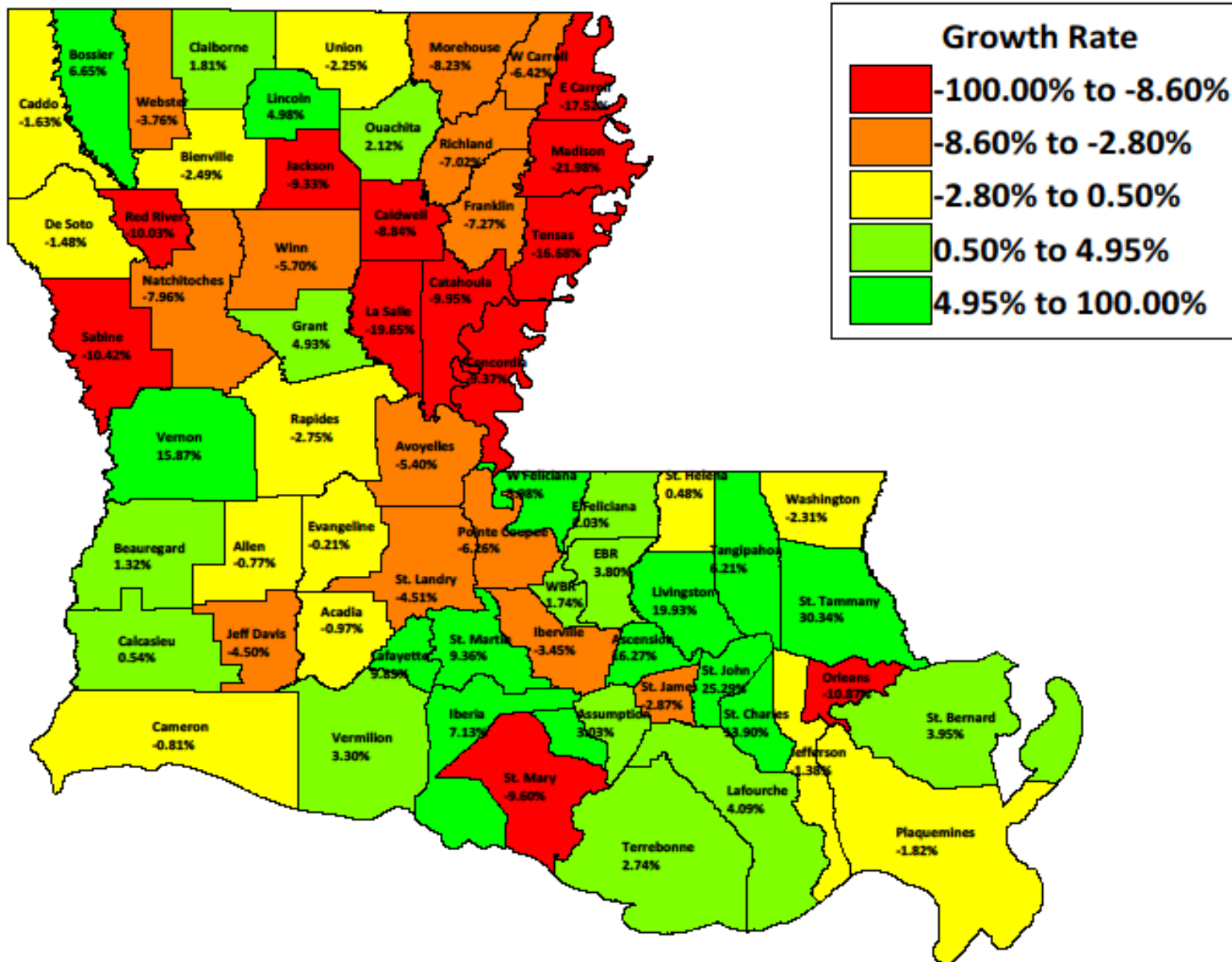
# Congress - 2001



### Parish - 1970 To 1980 Census Population Change



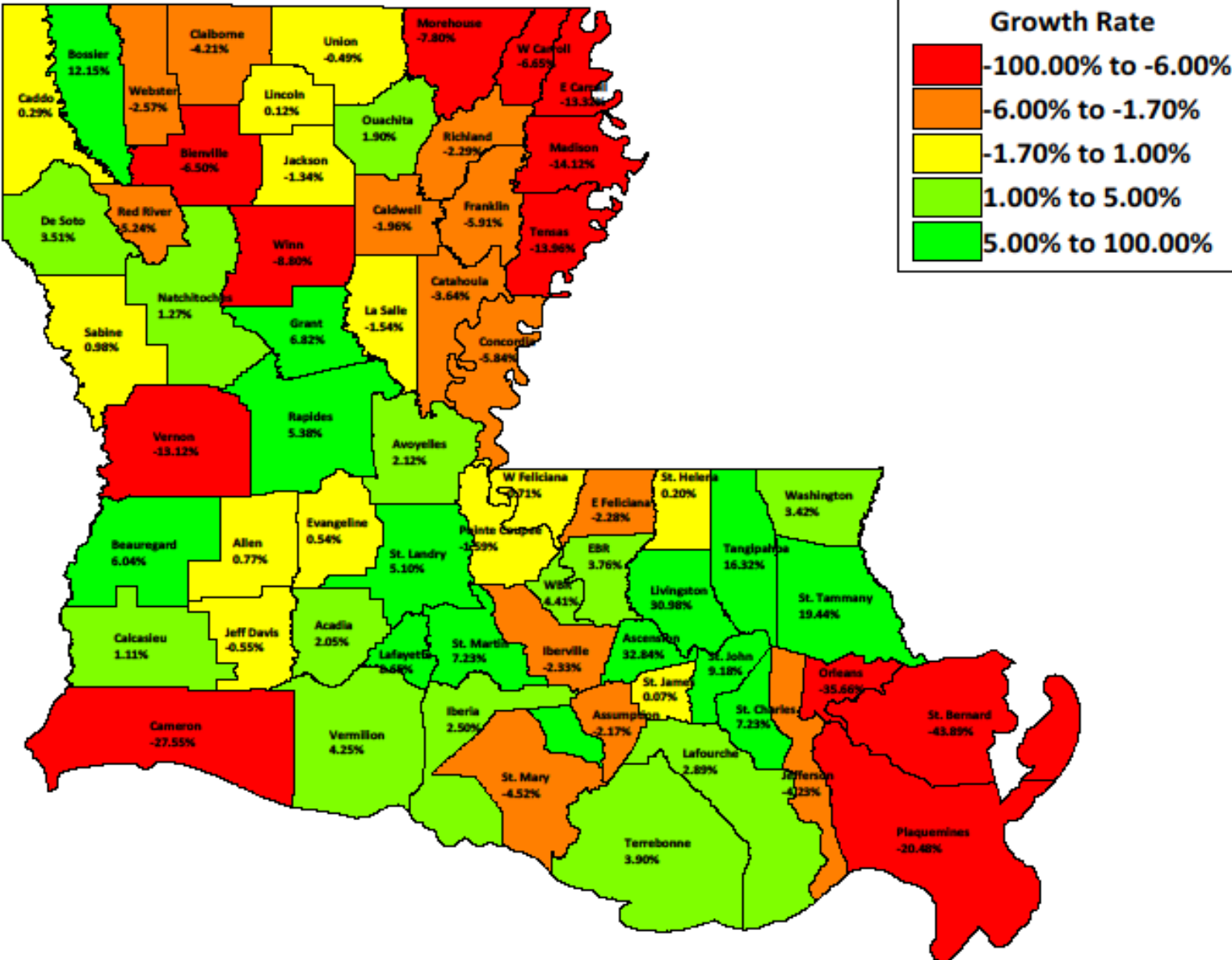
## Parish - 1980 To 1990 Census Population Change



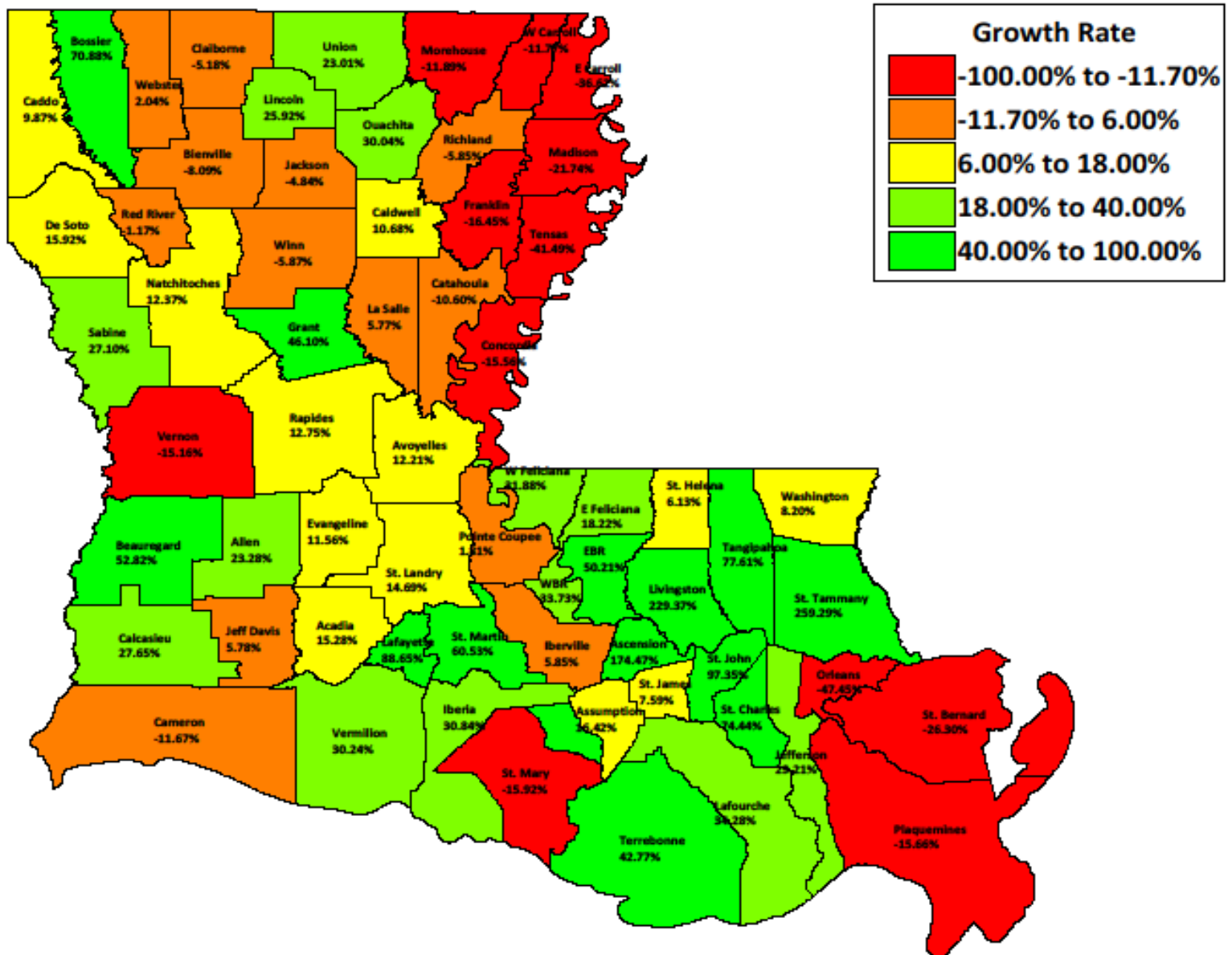




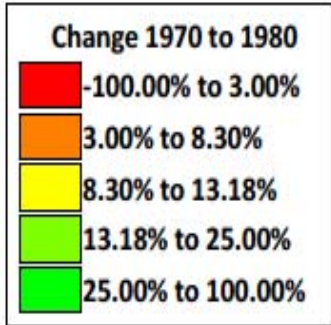
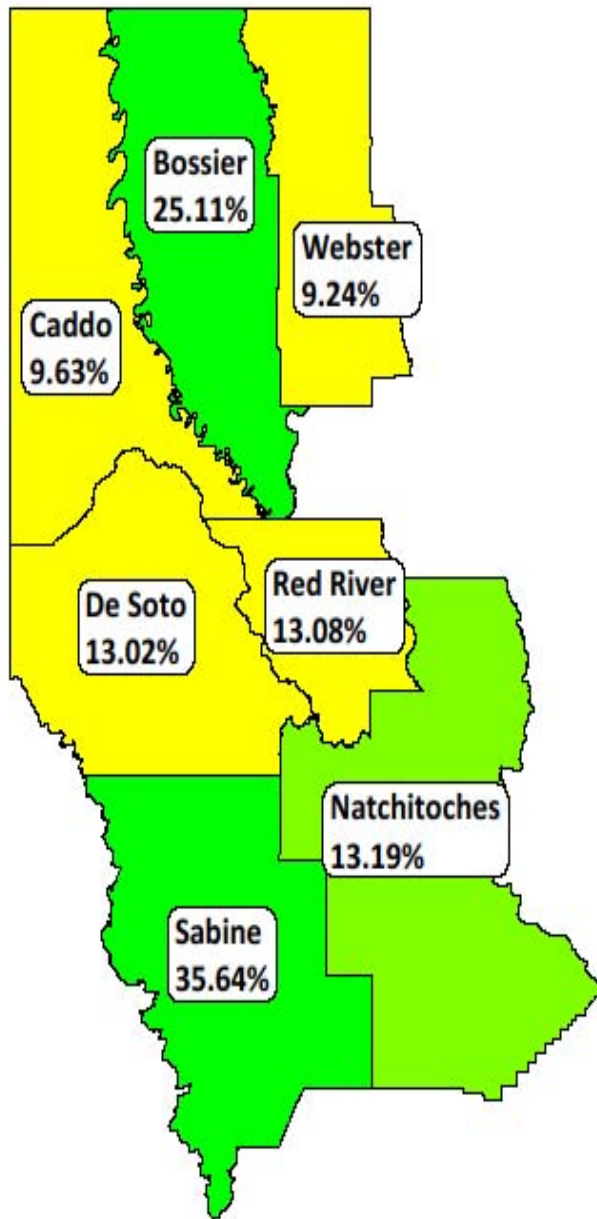
### Parish - 2000 Census To 2008 Census Estimate Population Change



## Parish - 1970 Census To 2008 Census Estimate Population Change

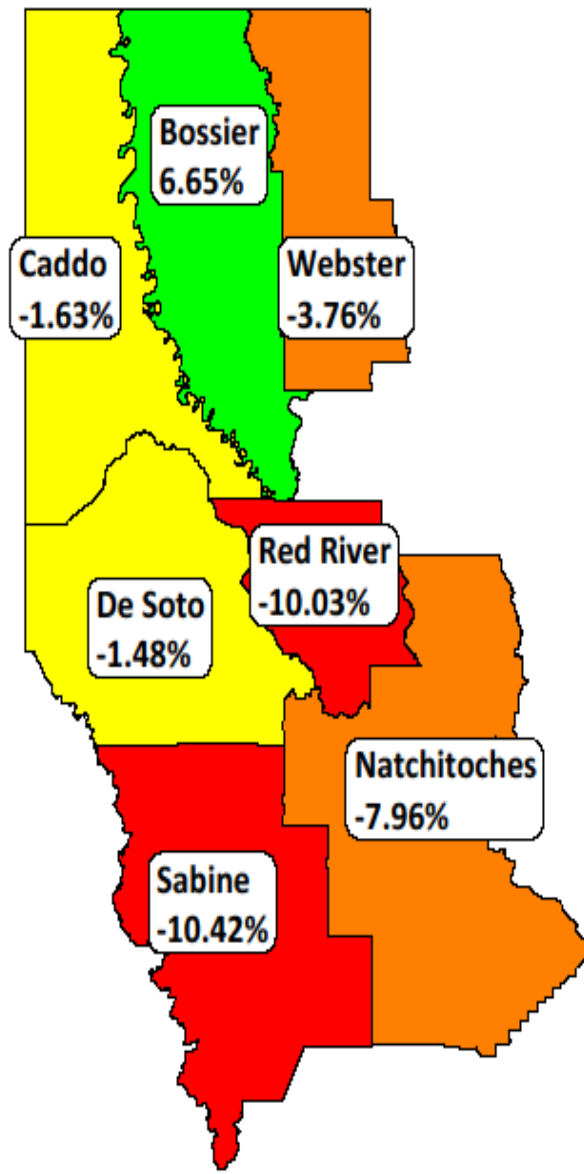


### Northwest Region - 1970 To 1980 Census Population Change



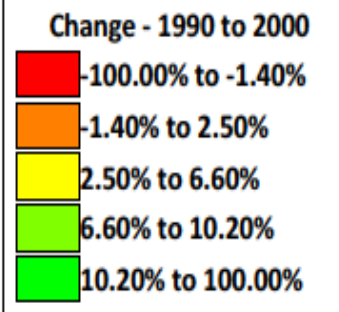
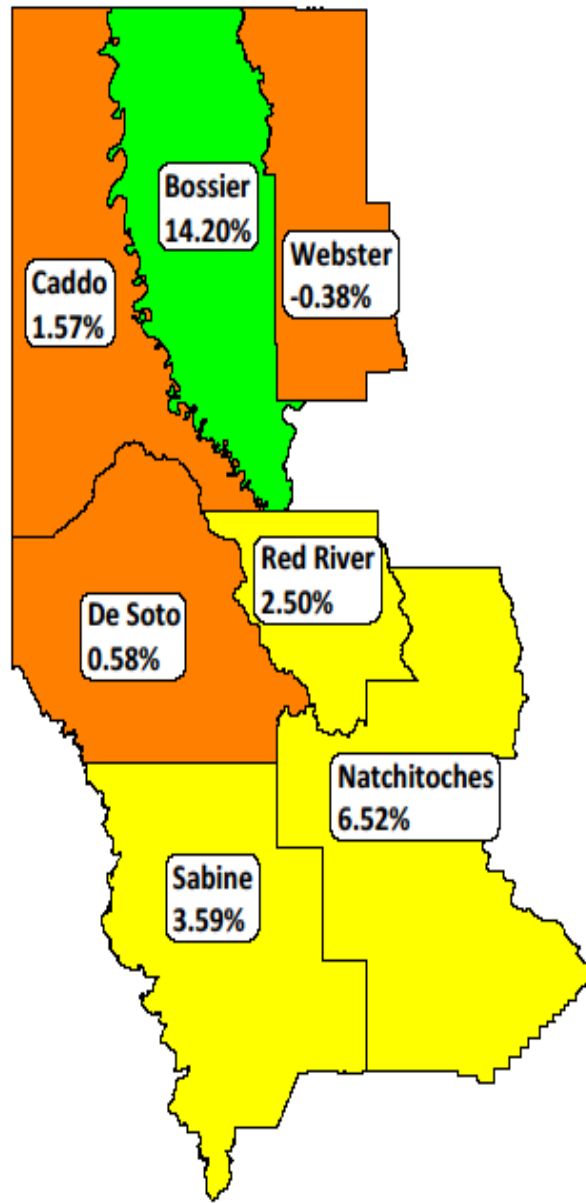
Parish	Population	Change
Red River	10,433	1,207
De Soto	25,727	2,963
Webster	43,631	3,692
Natchitoches	39,863	4,644
Sabine	25,280	6,642
Bossier	80,721	16,202
Caddo	252,358	22,174

### Northwest Region - 1980 To 1990 Census Population Change



Parish	Population	Change
Caddo	248,253	-4,105
Natchitoches	36,689	-3,174
Sabine	22,646	-2,634
Webster	41,989	-1,642
Red River	9,387	-1,046
De Soto	25,346	-381
Bossier	86,088	5,367

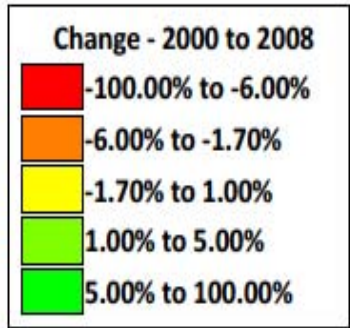
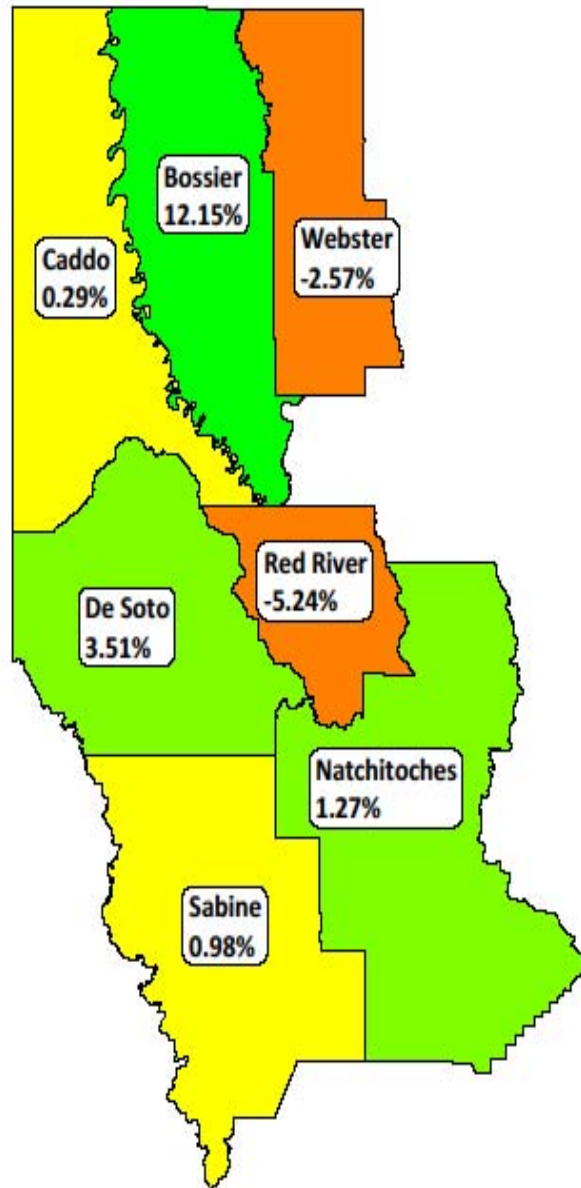
### Northwest Region - 1990 To 2000 Census Population Change



Parish	Population	Change
Webster	41,831	-158
De Soto	25,494	148
Red River	9,622	235
Sabine	23,459	813
Natchitoches	39,080	2,391
Caddo	252,161	3,908
Bossier	98,310	12,222

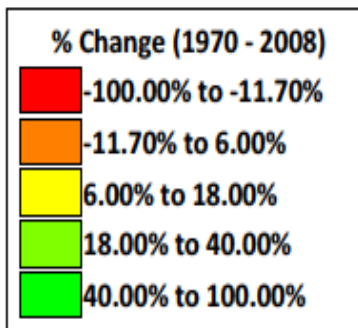
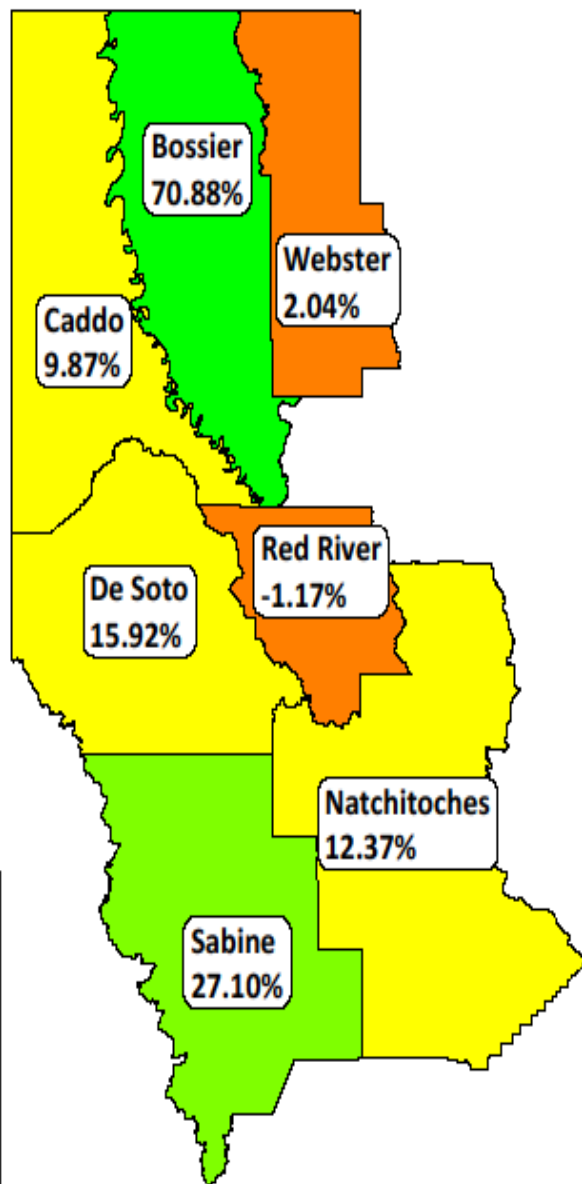


### Northwest Region - 2000 Census To 2008 Census Estimate Population Change



Parish	Estimate	Change
Webster	40,754	-1,077
Red River	9,118	-504
Sabine	23,688	229
Natchitoches	39,576	496
Caddo	252,895	734
De Soto	26,388	894
Bossier	110,250	11,940

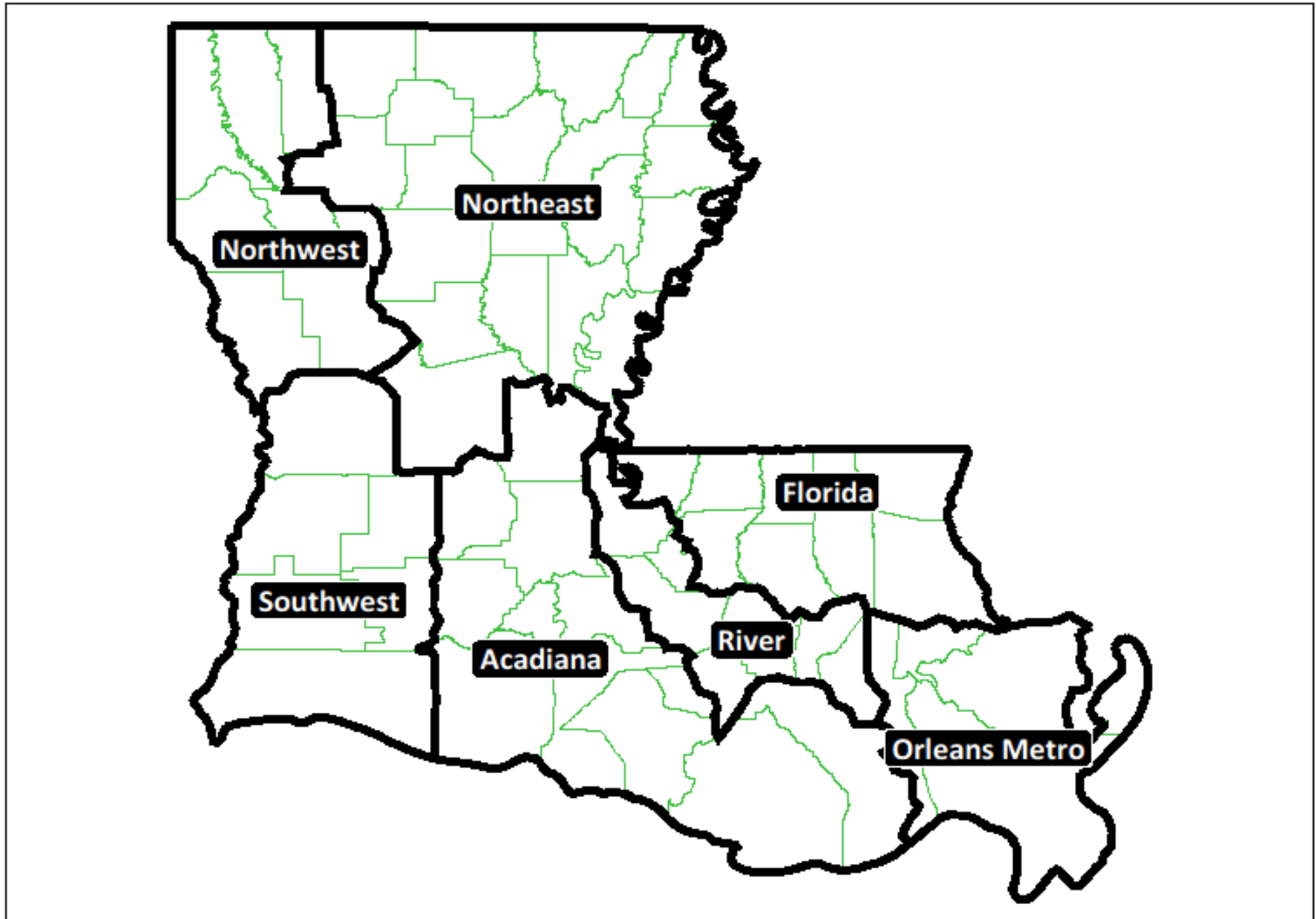
### Northwest Region - 1970 Census To 2008 Census Estimate Population Change



Parish	Change	% Change
Red River	-108	-1.17%
Webster	815	2.04%
Caddo	22,711	9.87%
Natchitoches	4,357	12.37%
De Soto	3,624	15.92%
Sabine	5,050	27.10%
Bossier	45,731	70.88%



## Louisiana Regions



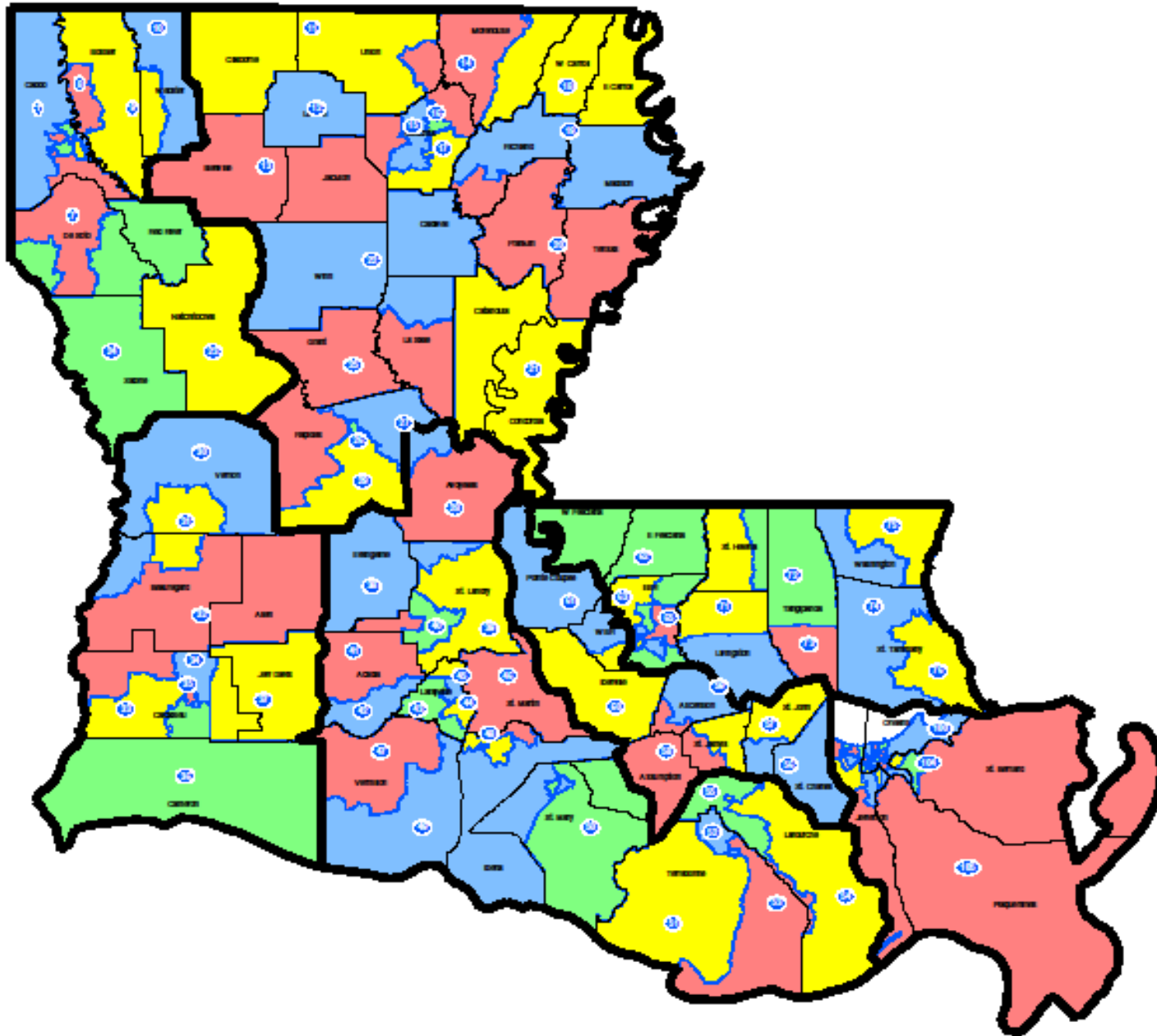
# House District Ideal Population Thru the Decades\*

\*The 2009 figure is based upon the 2009 Census Estimate and the 2010 figure is based upon the Census Projection

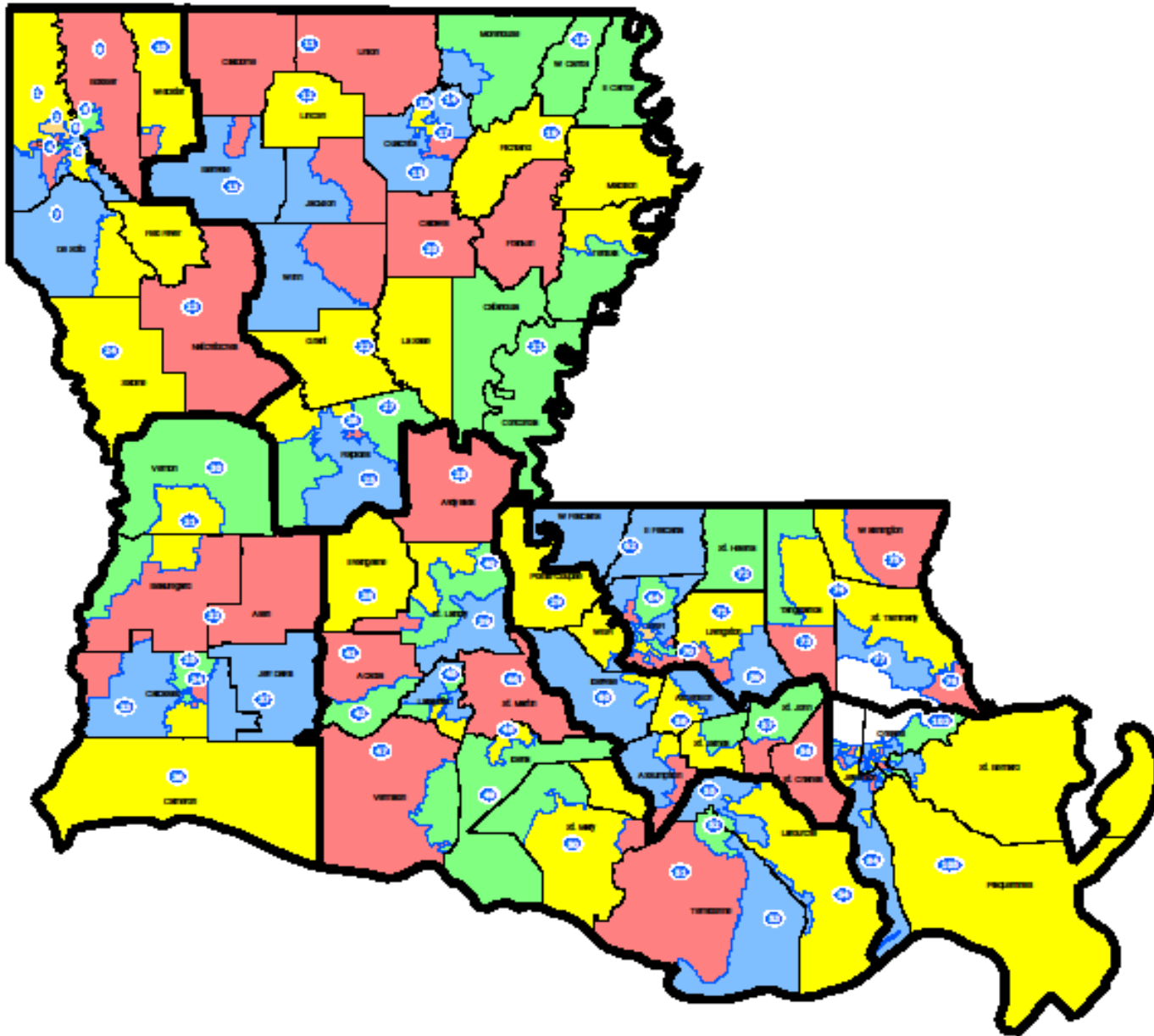


- 1970 Ideal: 34,697
- 1980 Ideal: 40,037
- 1990 Ideal: 40,190
- 2000 Ideal: 42,561
- 2009 Ideal: 42,781\*
- 2010 Ideal: 43,930\*

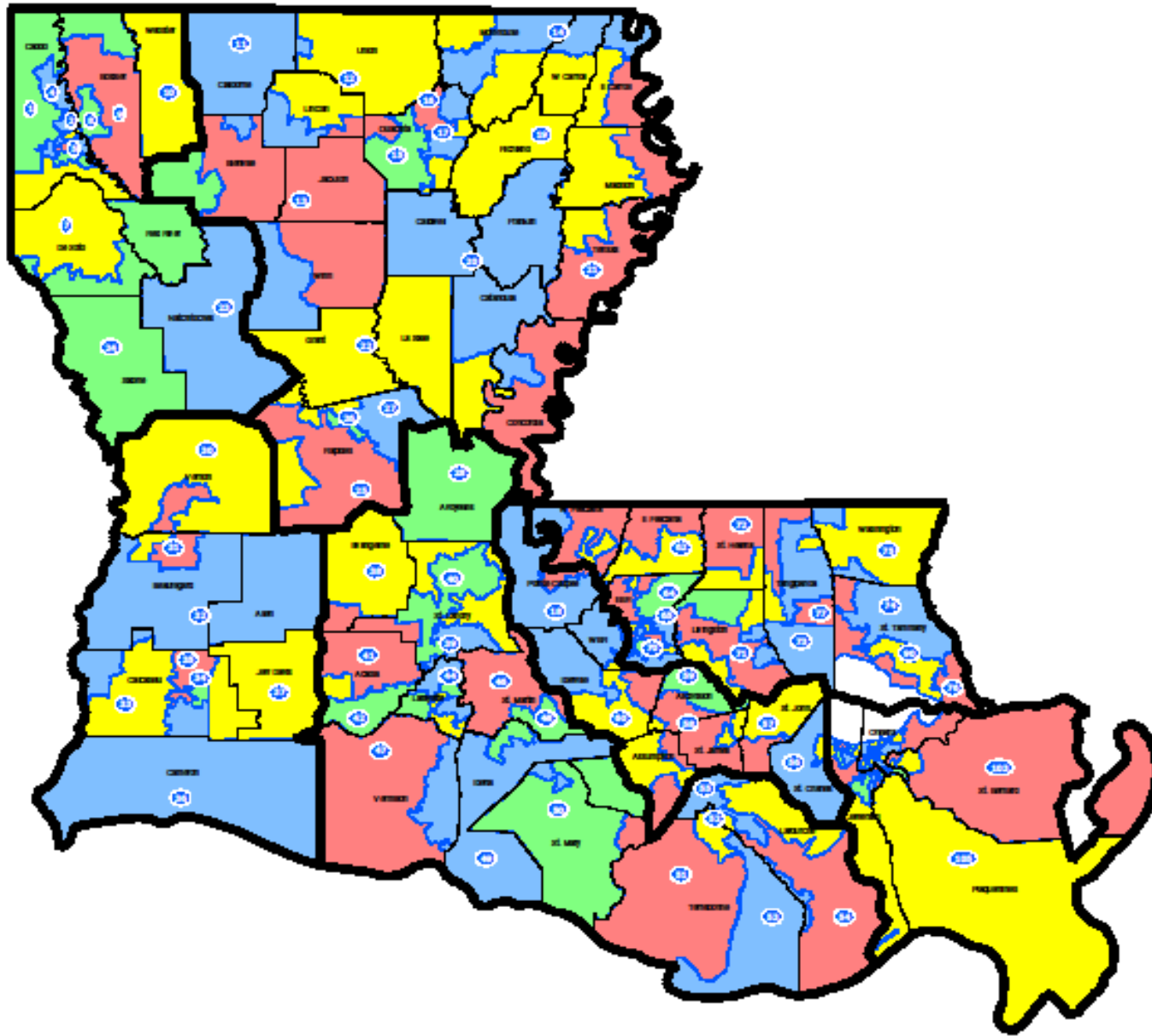
# House 1970



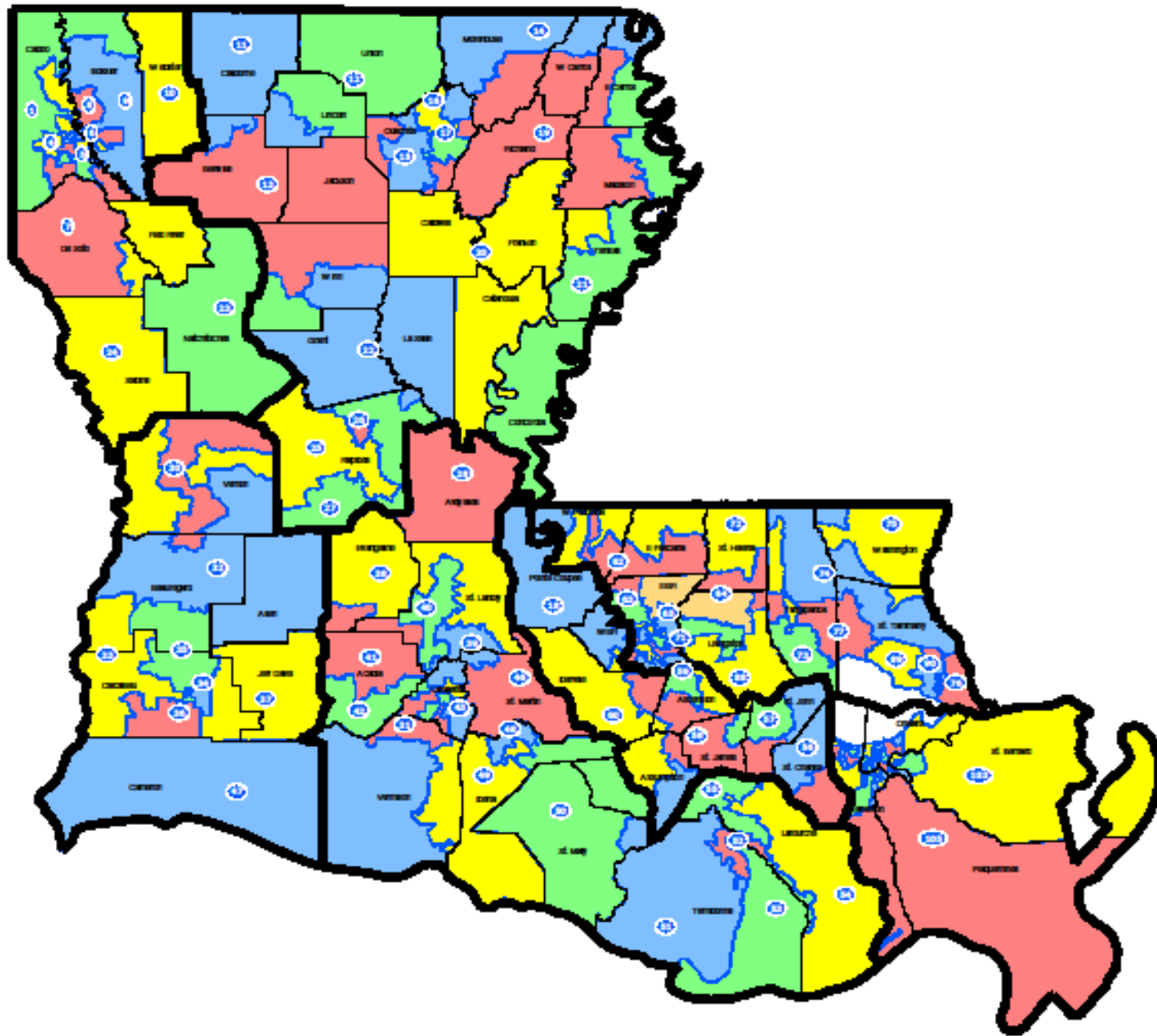
# House 1980



# House 1990



# House 2000

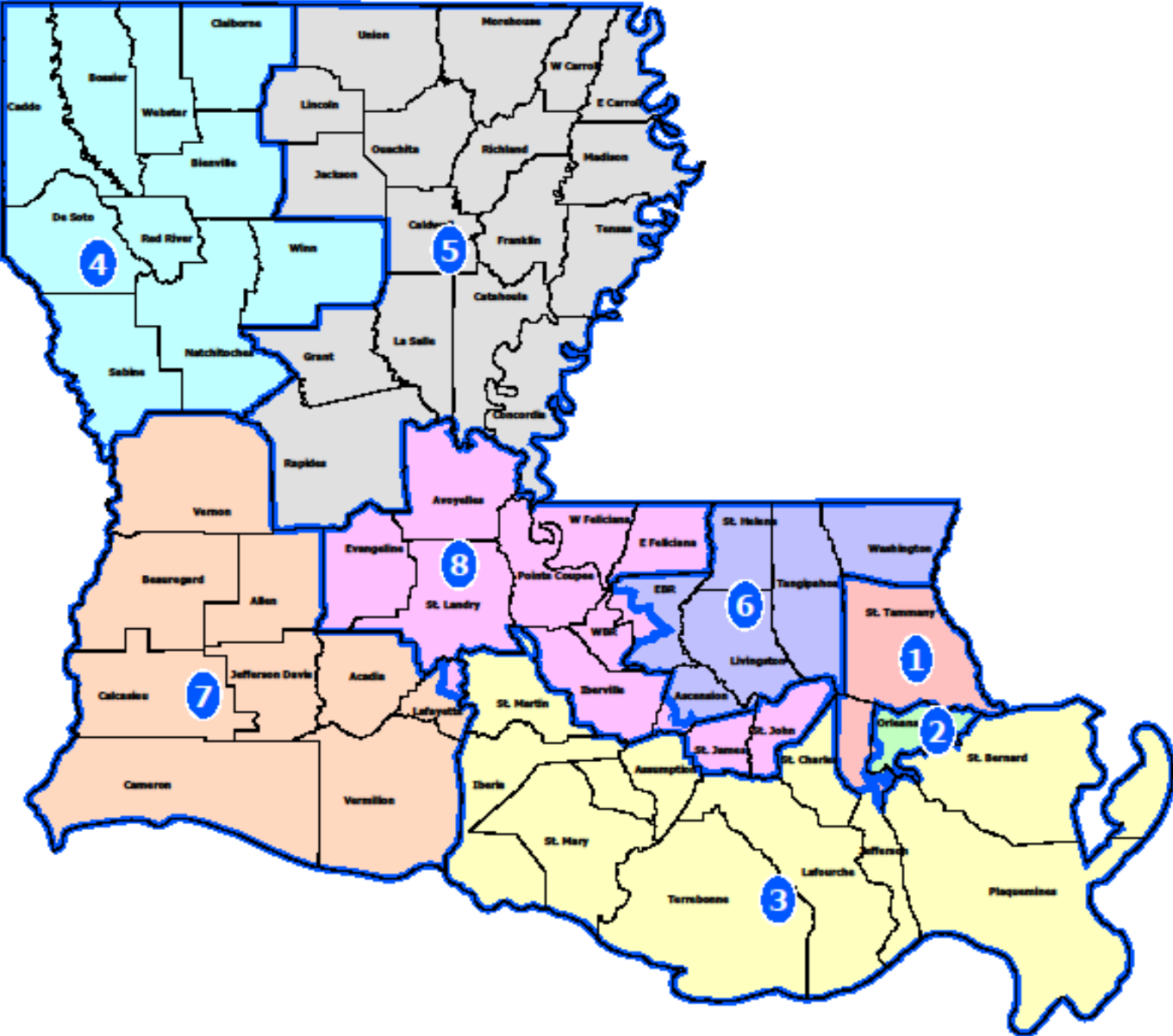


# BESE Ideal District Population

\*The 2009 figure is based upon the 2009 Census Estimate and the 2010 figure is based upon the Census Projection

- 1990 Ideal: 527,496
- 2000 Ideal: 558,622
- 2009 Ideal: 561,509\*
- 2010 Ideal: 576,584\*

# BESE Districts





# Supreme Court Ideal District Population

\*The 2009 figure is based upon the 2009 Census Estimate and the 2010 figure is based upon the  
Census Projection



1990 Ideal: 602,853

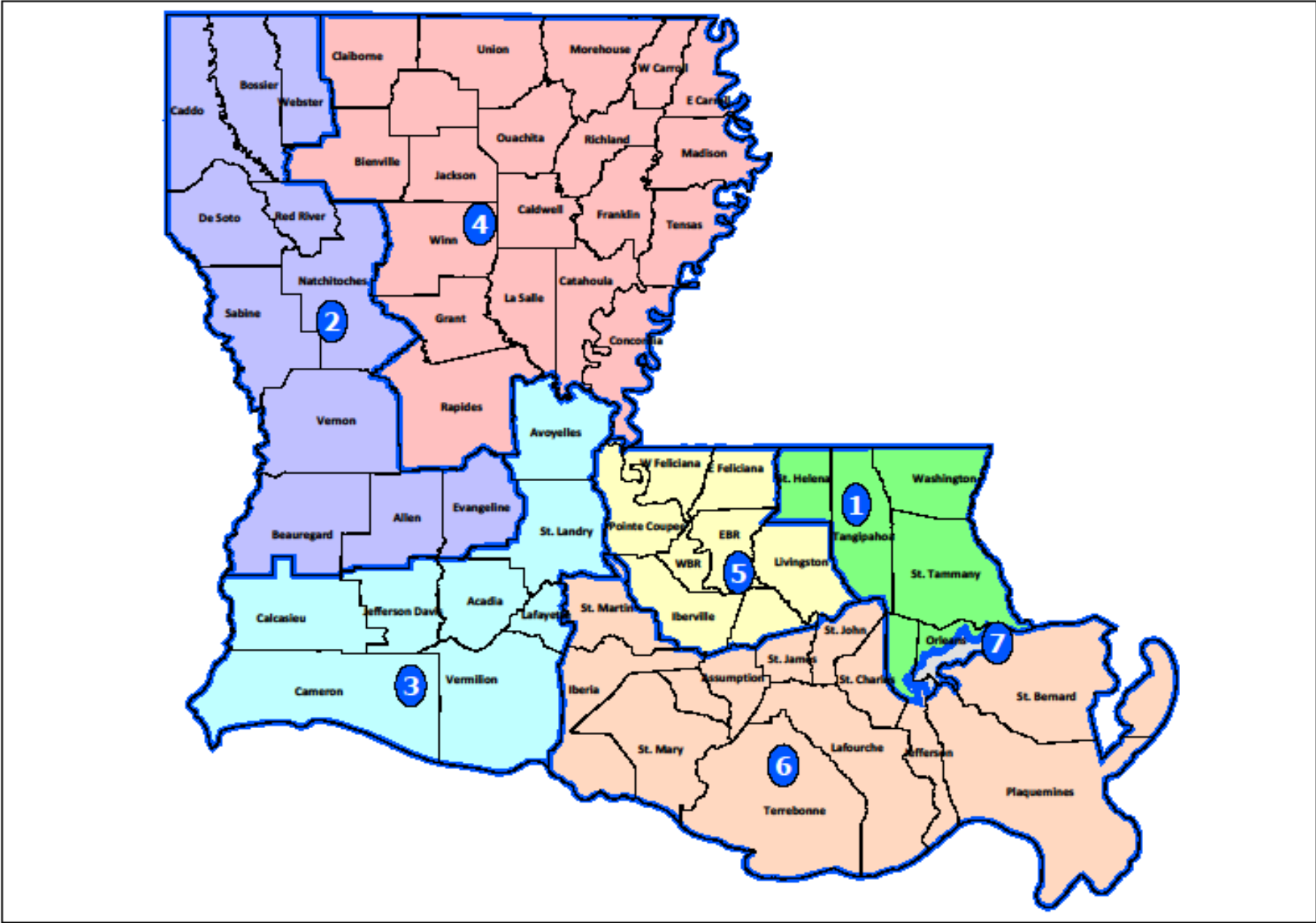
2000 Ideal: 638,425\*\*

2009 Ideal: 641,725\*

2010 Ideal: 658,954\*

(\*\*Note: Supreme Court Districts were not redrawn following the 2000 Census)

# LA Supreme Court





# Public Service Commission Ideal District Population

\*The 2009 figure is based upon the 2009 Census Estimate and the 2010 figure is based upon the Census Projection

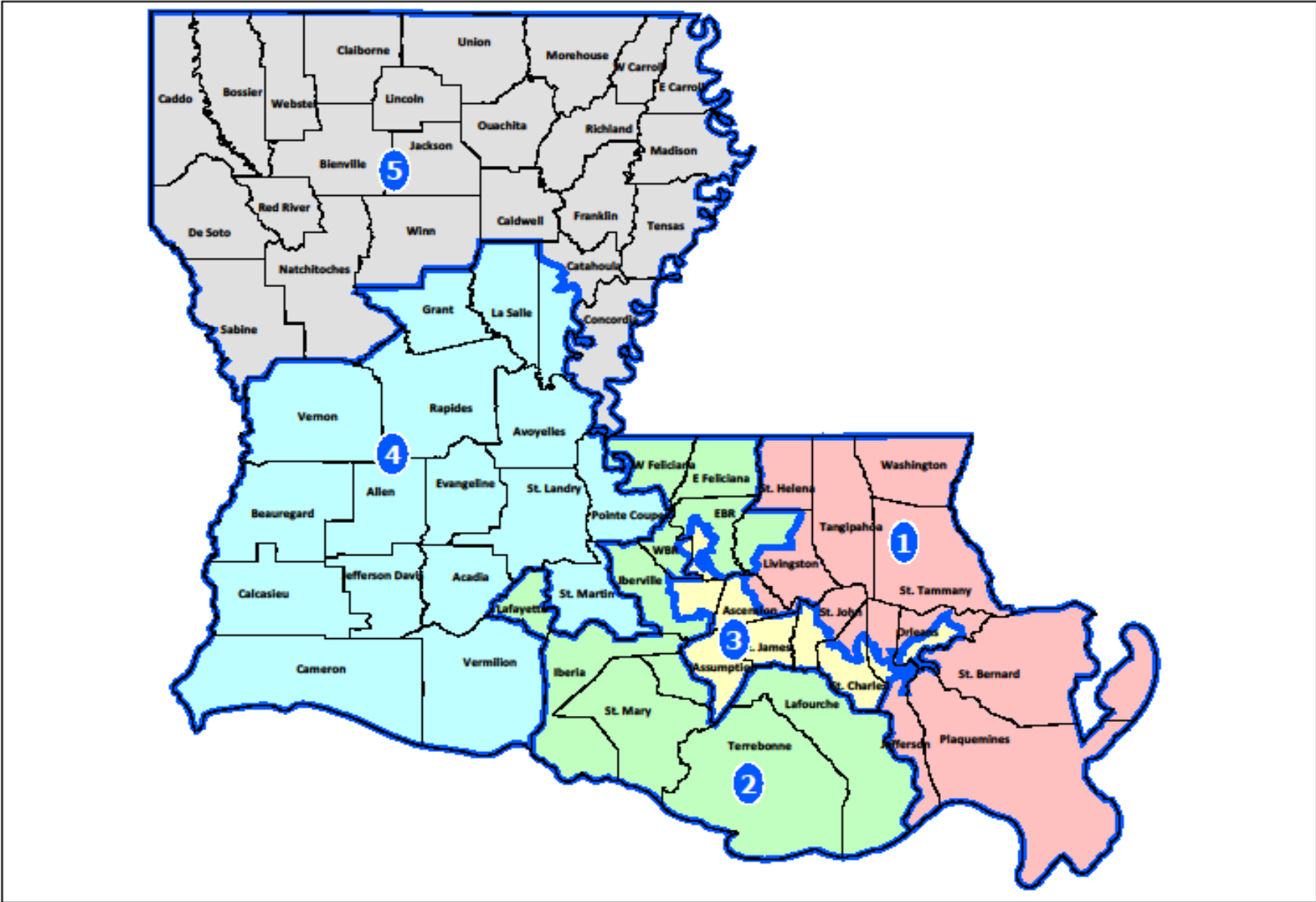
1990 Ideal: 843,994

2000 Ideal: 893,795

2009 Ideal: 898,415\*

2010 Ideal: 922,535\*

# PSC Districts



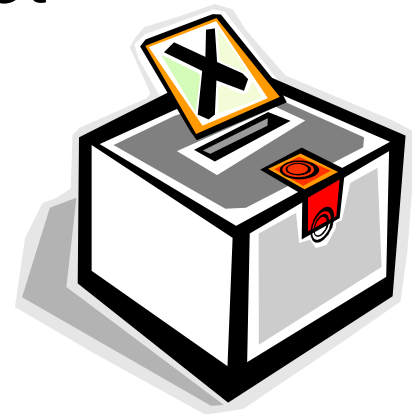
# Discrimination Against Minorities

- Section 5 of the Voting Rights Act
  - In covered jurisdictions, plans must be precleared
    - Louisiana IS a covered jurisdiction
    - As are ALL of its subdivisions
  - Do not allow Retrogression
  - “Any discriminatory purpose”
  - No discriminatory effect
  - No requirement to maximize minority representation



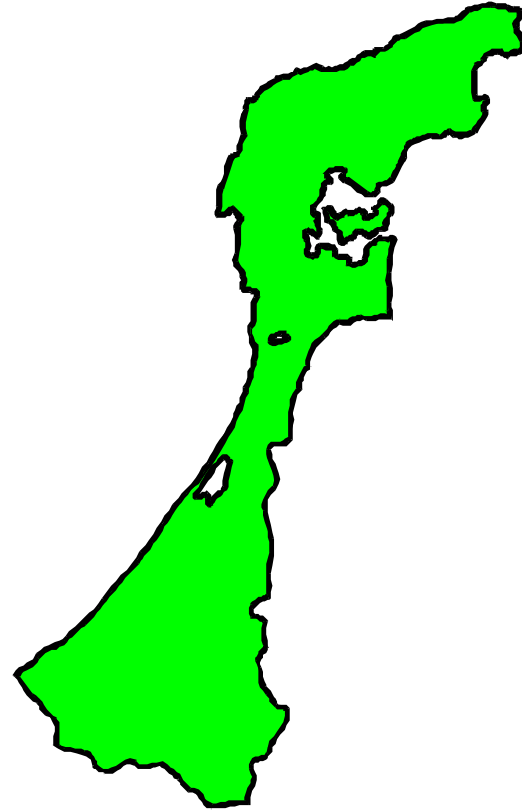
# Discrimination Against Minorities

- Section 2 of the Voting Rights Act
  - National standard
  - No discriminatory effect
  - Gingles preconditions
  - Totality of the circumstances
  - Districts in which a minority has a fair chance to win



# Racial Gerrymandering

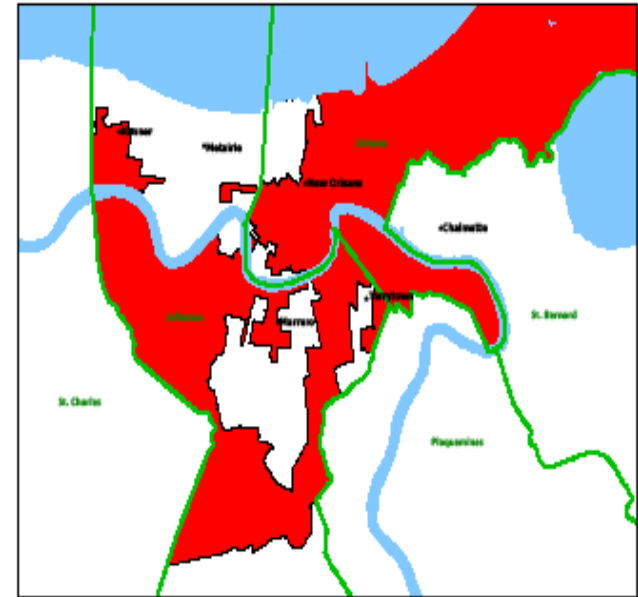
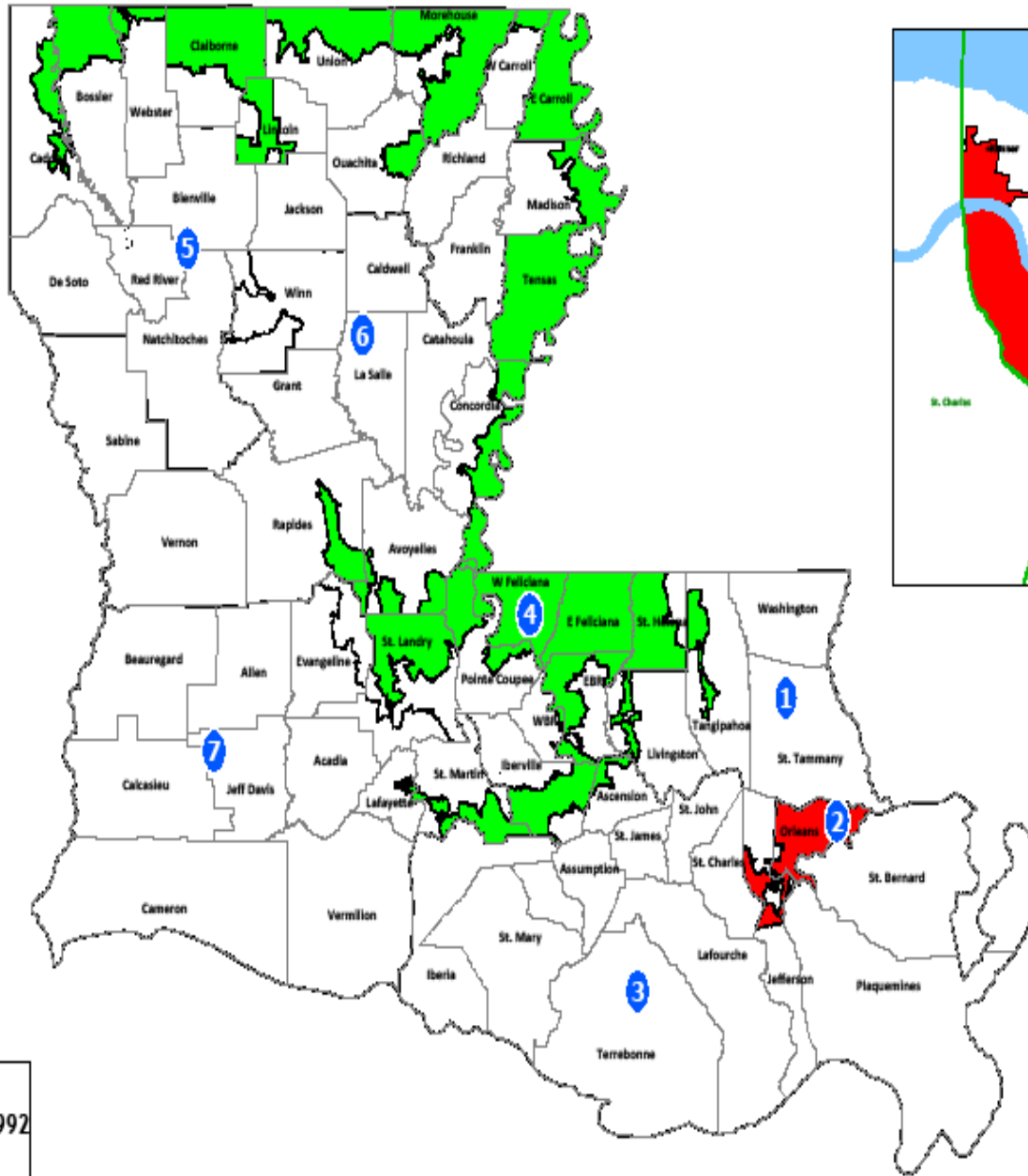
- What is racial gerrymandering?
- Equal Protection Clause
- What was the rationale in drawing district lines?





Congress - 1992

Orleans - Jefferson



Map layers  
Congress - 1992  
Parish

# Racial Gerrymandering (cont.)

- Race-conscious redistricting is not *per se* unconstitutional
- Consideration of race-neutral districting principles
  - Compactness, contiguity, communities of interest, respect for political subdivisions, protection of core districts

# Racial Gerrymandering (cont.)

- If race is found to be the “predominant overriding factor,” strict scrutiny will apply
- What must a state prove for the plan to survive strict scrutiny?
  - A law narrowly tailored to serve a compelling state interest

# WEB Addresses of Interest

- House Redistricting Home Page

- [http://house.louisiana.gov/H\\_Redistricting2011/](http://house.louisiana.gov/H_Redistricting2011/)

- Page for this Educational Presentation

- [http://house.louisiana.gov/H\\_Redistricting2011/default\\_RedistMeetings2011.htm](http://house.louisiana.gov/H_Redistricting2011/default_RedistMeetings2011.htm)

# Key Contacts

House & Governmental Affairs Committee  
225-342-2403

- [Shawn O'Brien](#) Secretary  
225-342-2403
- [Patricia Lowrey – Dufour](#) Legislative Analyst  
225-342-2396
- [Mark Mahaffey](#) Attorney  
225-342-2598
- [Alfred Speer](#) Clerk of the House  
225-342-7259
- [Dr. William Blair](#) Demographer  
225-342-2591