



**Redistricting in Louisiana
Past & Present
Regional Educational
Presentation**

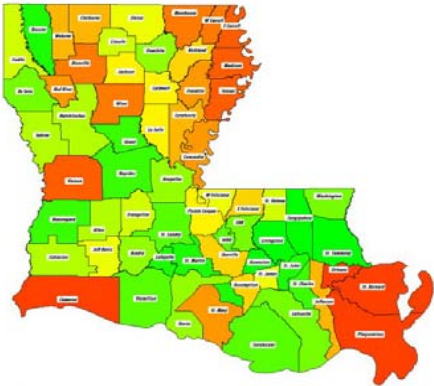
Monroe

February 2, 2010



To get more information regarding the Louisiana House of Representatives redistricting process go to:

http://house.louisiana.gov/H_Redistricting2011



Fan “Louisiana House of Representatives Redistricting” on Facebook

This PowerPoint presentation is available now at:

http://house.louisiana.gov/H_Redistricting2011/default_RedistMeetings2011.htm

2010 Census Presentation

U. S. Census Bureau

Nefertitti Rhodes

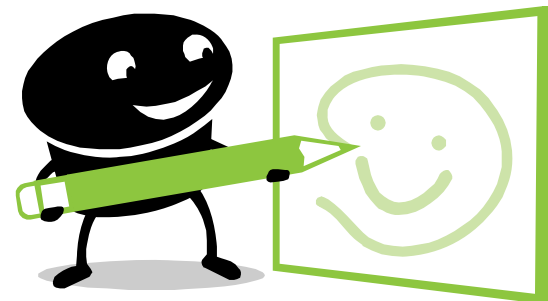
Partnership Specialist

What is Redistricting?

- Reapportionment means



- Redistricting means



Districts

- House & Senate districts
- Congressional districts
- P.S.C. districts
- B.E.S.E. districts
- Supreme Court districts
- Election districts of lower courts



Legislature's Responsibility

- Redistricting is undertaken every 10 years following the federal decennial census
- New redistricting plans are based on the latest decennial population counts



Why?

- Apportionment of Congress
- Article III, Section 6 of the Constitution of La.
- 14th Amendment of the U.S. Constitution



LEGAL ISSUES

- U. S. Constitution
- Voting Rights Act of 1965
- Louisiana Constitution
- Louisiana Statutes



LEGAL ISSUES

U. S. Constitution

- **Population Equality**
 - One Person, One Vote



LEGAL ISSUES

Population Equality -- One Person, One Vote

- Congress
 - Article I, Section 2 and 14th Amendment
 - Representatives ... apportion among the ... states ... according to their respective numbers
 - Districts must be as nearly **equal in population as practicable**
 - Deviation and overall range: close to zero as “practicable”

LEGAL ISSUES

Population Equality -- One Person, One Vote

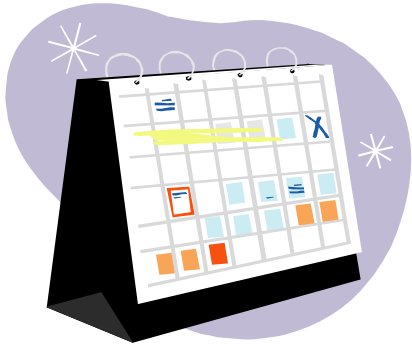
State Legislative Jurisdictions

- 14TH Amendment--Equal Protection Clause
 - Districts substantially equal in population
 - A maximum overall deviation range of $\pm 5\%$

LEGAL ISSUES

Louisiana Constitution

- LOUISIANA LEGISLATURE
 - Article III, Section 1: Single Member Districts
 - Article III, Section 3: no more than 39 Senators; 105 Representatives
 - Article III, Section 6:
 - Legislature must be redistricted by Dec. 31, 2011 or any elector can petition the Supreme Court to do it
 - Must use Census Population Data



Proposed Timeline For Redistricting

- **April 1, 2010:** Census Day
- **December 2010:** President of the U.S. notified of the population of each state
- **January 2011:** State Informed About Number of Congressional Seats allocated to Louisiana
- **February __, 2011:** Census Data is delivered to the Legislature
- **February __, 2011:** Committee hearing on Census data
- **February __-March __, 2011:** Public Hearings around the state

Timeline For Redistricting (Cont.)

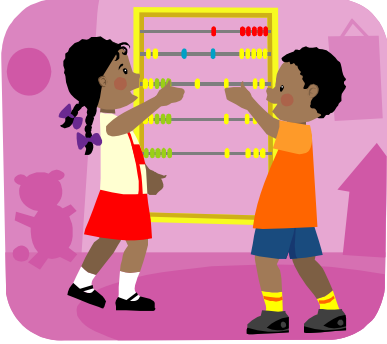
- **April ____ – ____, 2011:** Proposed Extraordinary Session to establish new Legislative, Congressional, Supreme Court, Public Service Commission, and BESE districts
- **April 25 - June 23, 2011:** Regular Session
- **End of April-May 2, 2011:** Proposed deadline for Submission of Plans for preclearance
- **August 29, 2011:** Deadline for SOS to receive notice of preclearance of Legislative plans (R.S. 18:1942)
- **September 6 - 8, 2011:** Qualifying dates for Legislative & BESE elections
- **October 22, 2011:** Primary Election for members of the legislature and elected BESE members
- **November 19, 2011:** General Election





Timeline For Redistricting (Cont.)

- **December 31, 2011:** Article III, §6 deadline for the Legislature to redistrict itself
- **January 9, 2012:** Inauguration Day
- **June 27, 2012:** Deadline for Secretary of State to receive notice of preclearance of plans for Congress, Public Service Commission, Supreme Court, and other judgeships for inclusion on fall ballot (R.S. 18:1942)
- **July 5, 6, & 9, 2012:** Qualifying for regular elections
- **August 25, 2012:** First Party Primary for Congress
- **October 6, 2012:** Open Primary Election for Supreme Court and Public Service Commission (staggered terms) and Second Party Primary for Congress
- **November 6, 2012:** General Election



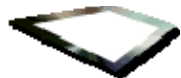
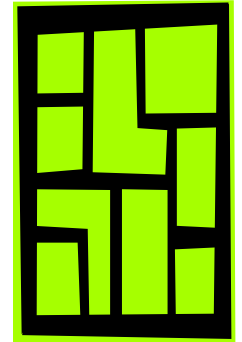
The 2010 Census

- **Primary Purpose:** A count of persons in each state as of April 1, 2010, for the apportionment of Representatives in Congress
- **Secondary Purpose: Redistricting**
 - Public Law 94-171 requires the Census Bureau to report population data by various geographic areas
- **Other Purposes:** Making public policy decisions and fund allocation

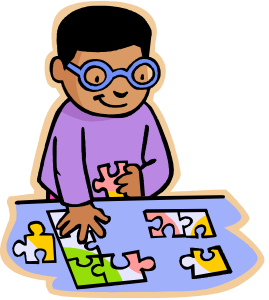


Census Population is reported by Geographic Area

- Parishes
- Legislative districts
- Municipalities & Census Designated Places
 - Census Tracts
 - Voting Districts (Precincts)
 - Census Block Groups
 - Census Blocks



Building Blocks For Legislatively Drawn Plans



- The Legislature uses precincts as the building blocks for redistricting plans
- Parish Governing Authorities are required to use census block boundaries as the boundaries for precincts

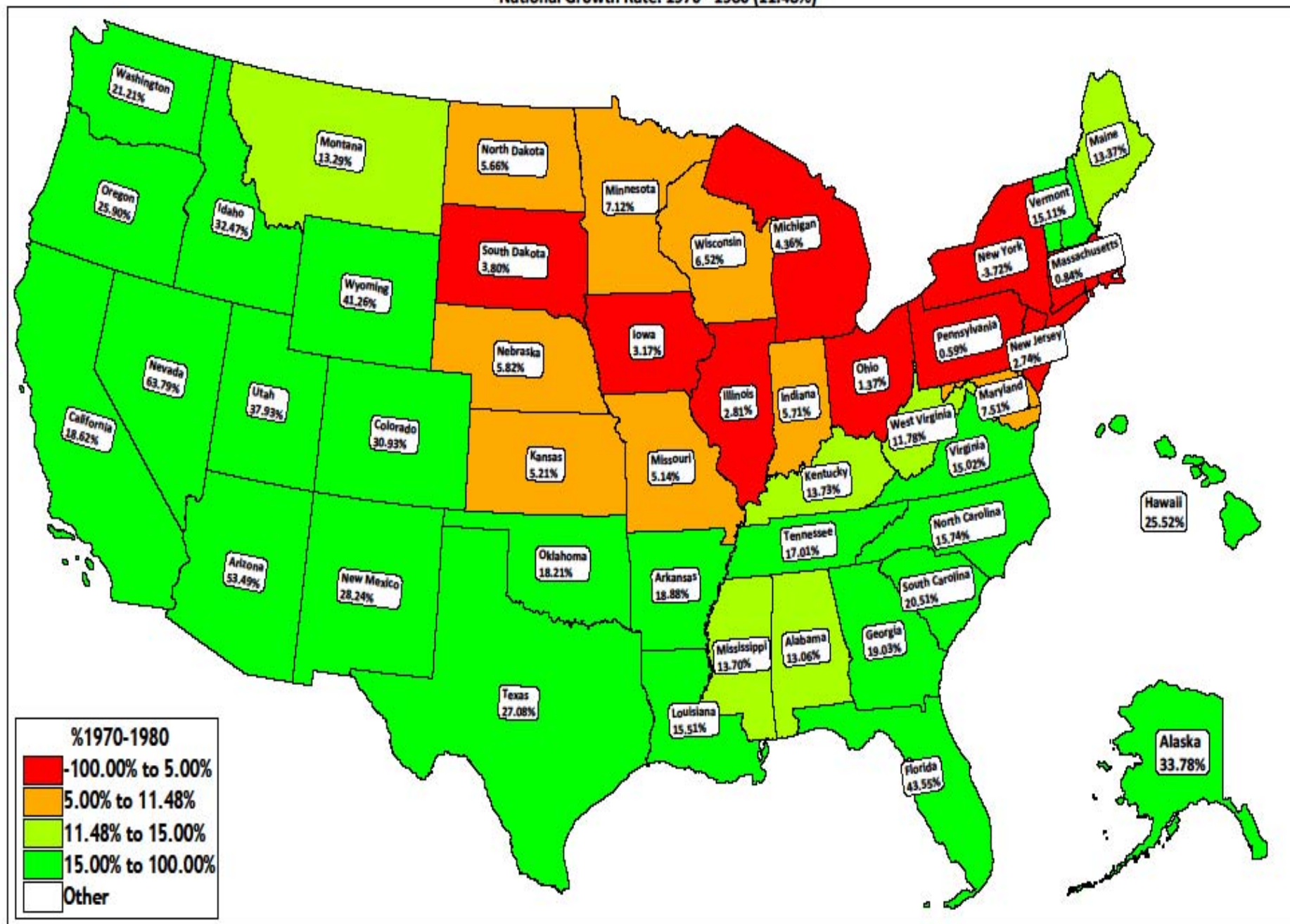


P.L. 94-171 Data Includes the Following Tabulations By Precinct

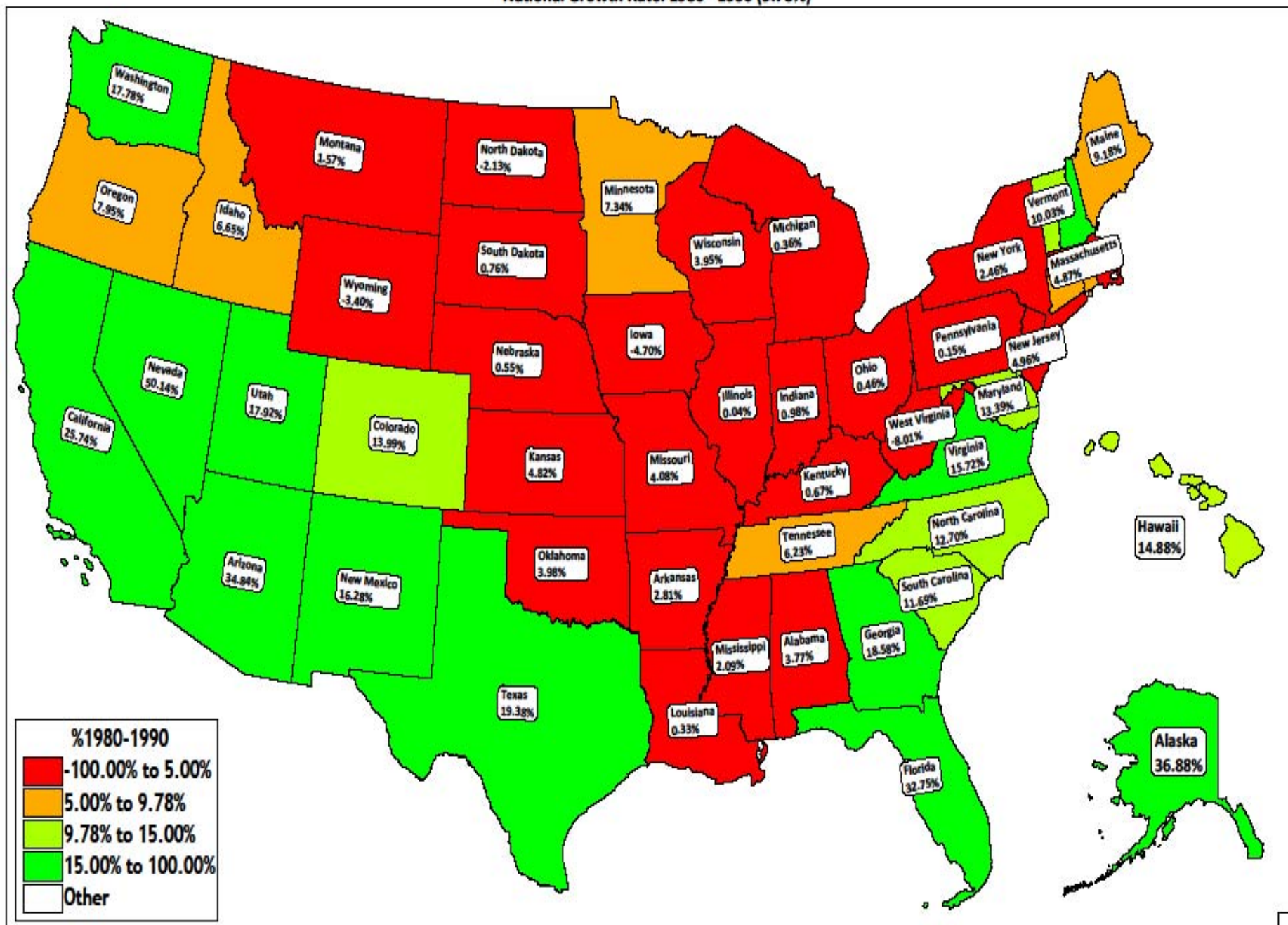


- **Total Population**
- **Voting Age Population (over 18)**
- **Racial Data**

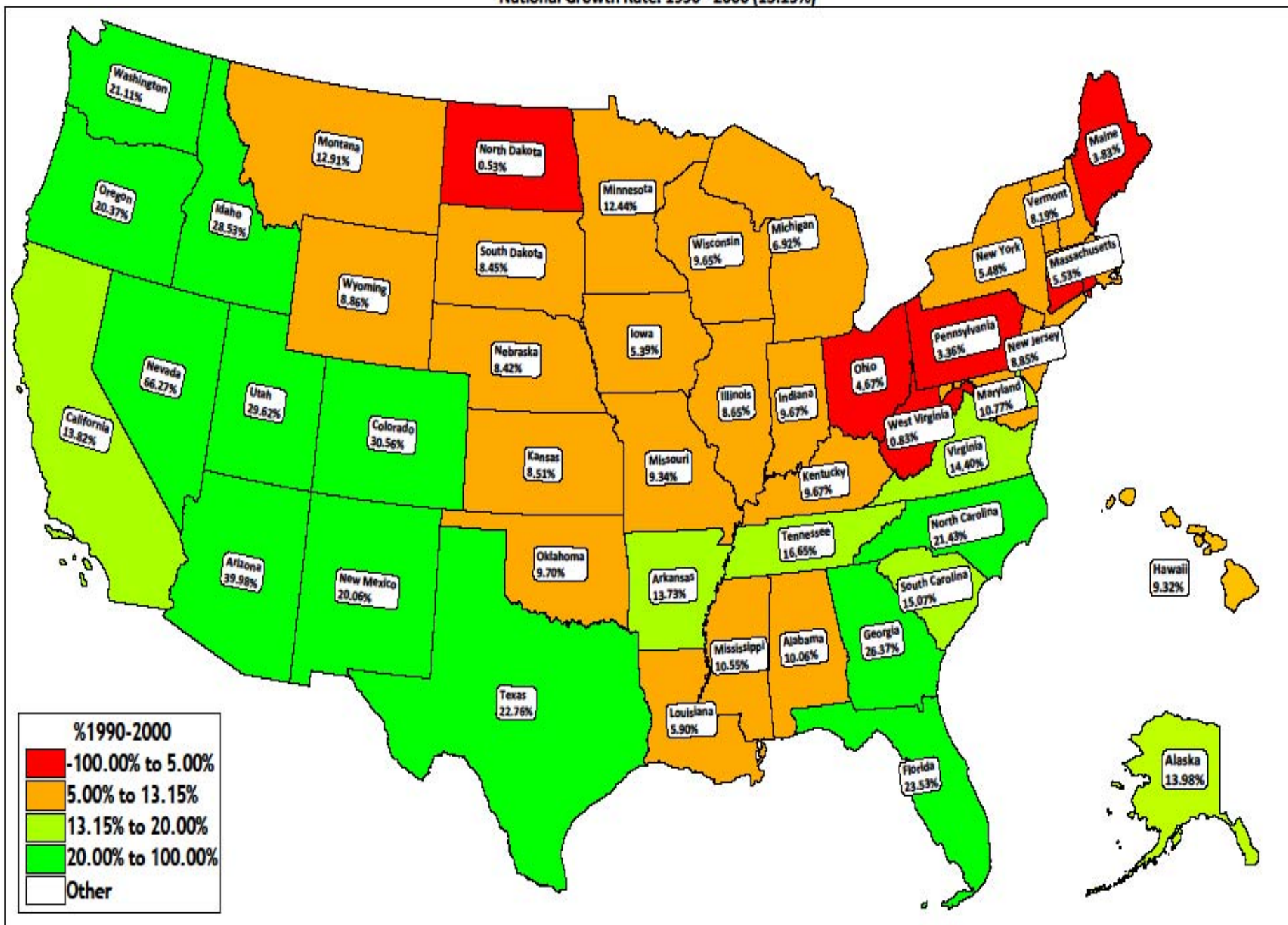
National Growth Rate: 1970 - 1980 (11.48%)



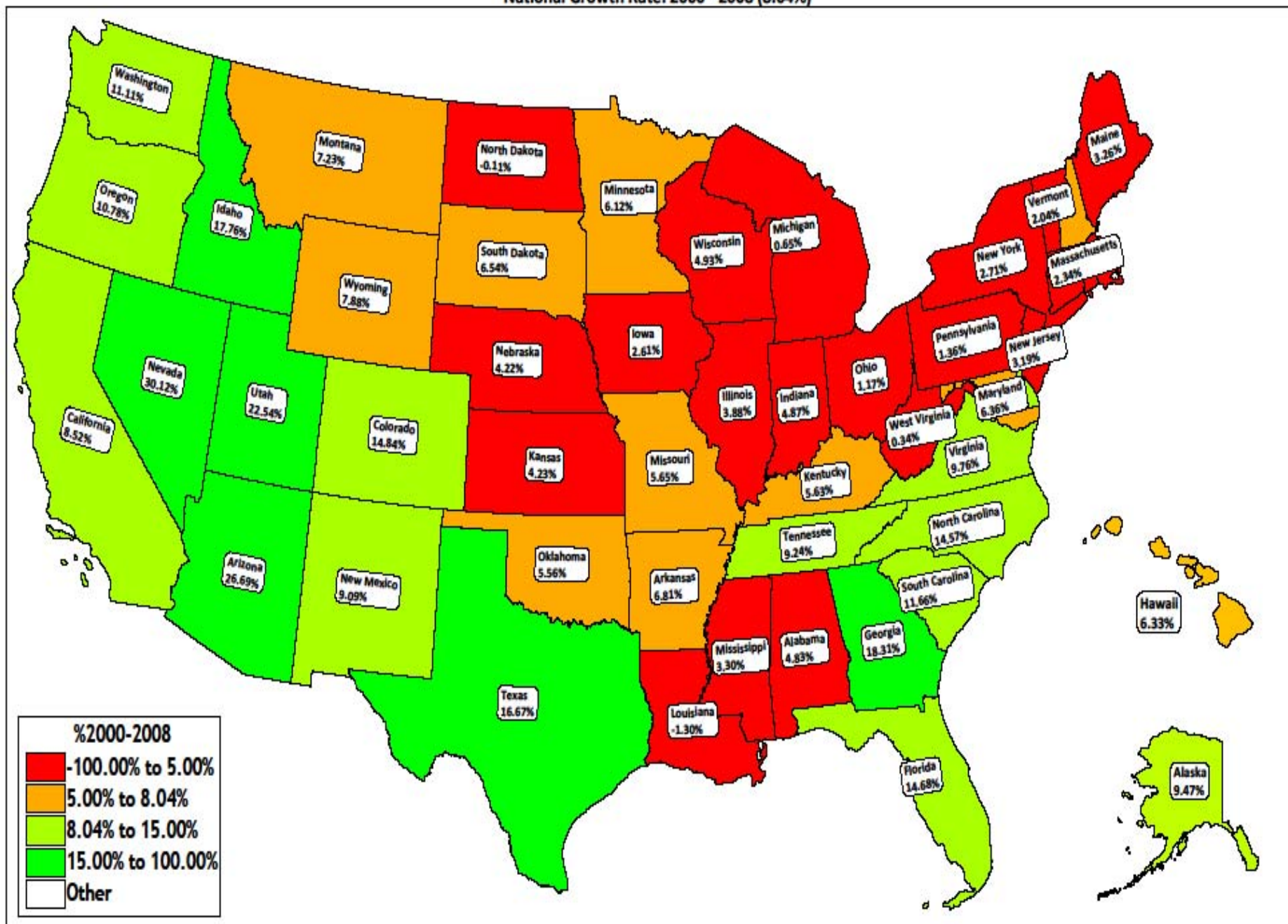
National Growth Rate: 1980 - 1990 (9.78%)



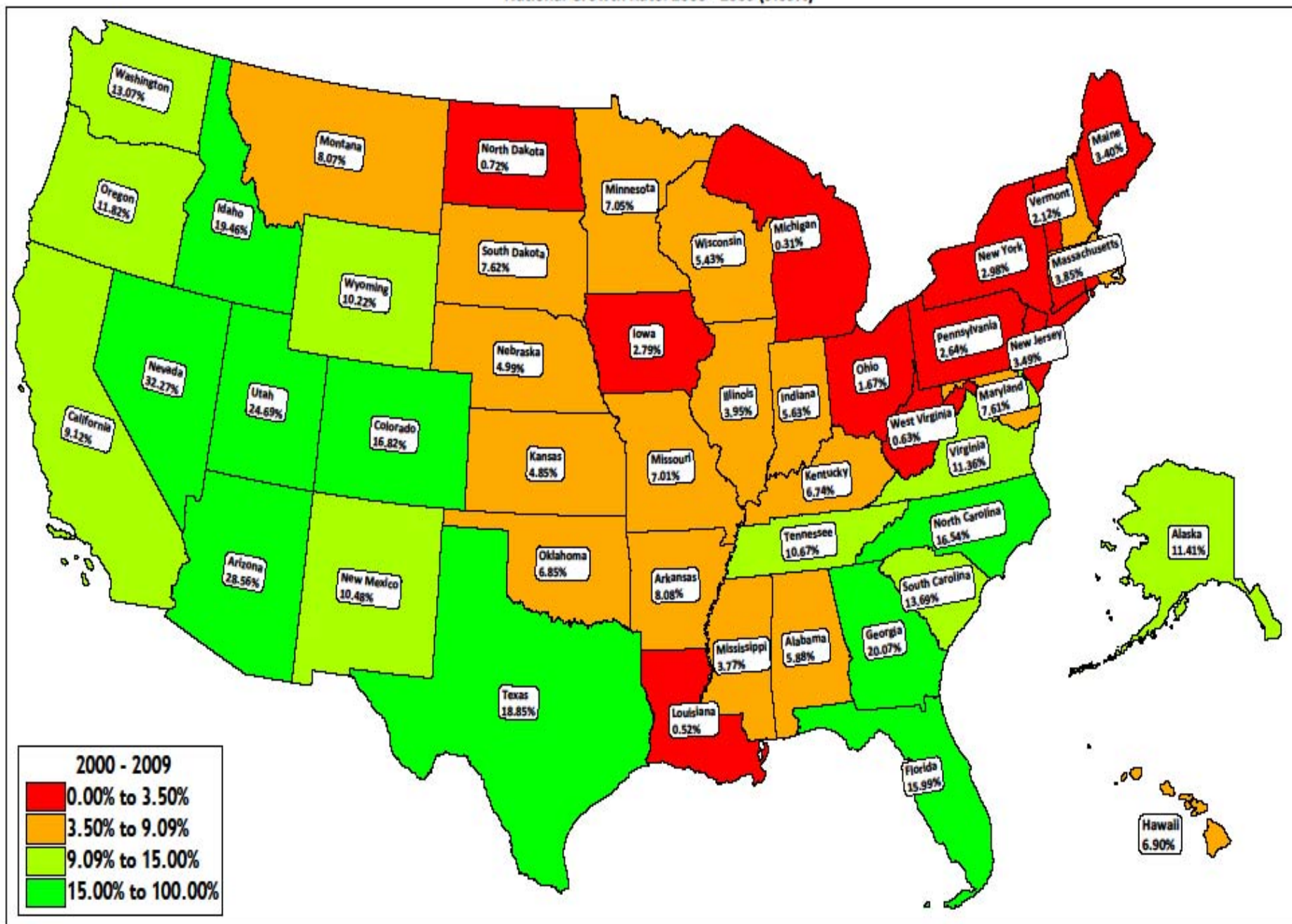
National Growth Rate: 1990 - 2000 (13.15%)



National Growth Rate: 2000 - 2008 (8.04%)



National Growth Rate: 2000 - 2009 (9.09%)



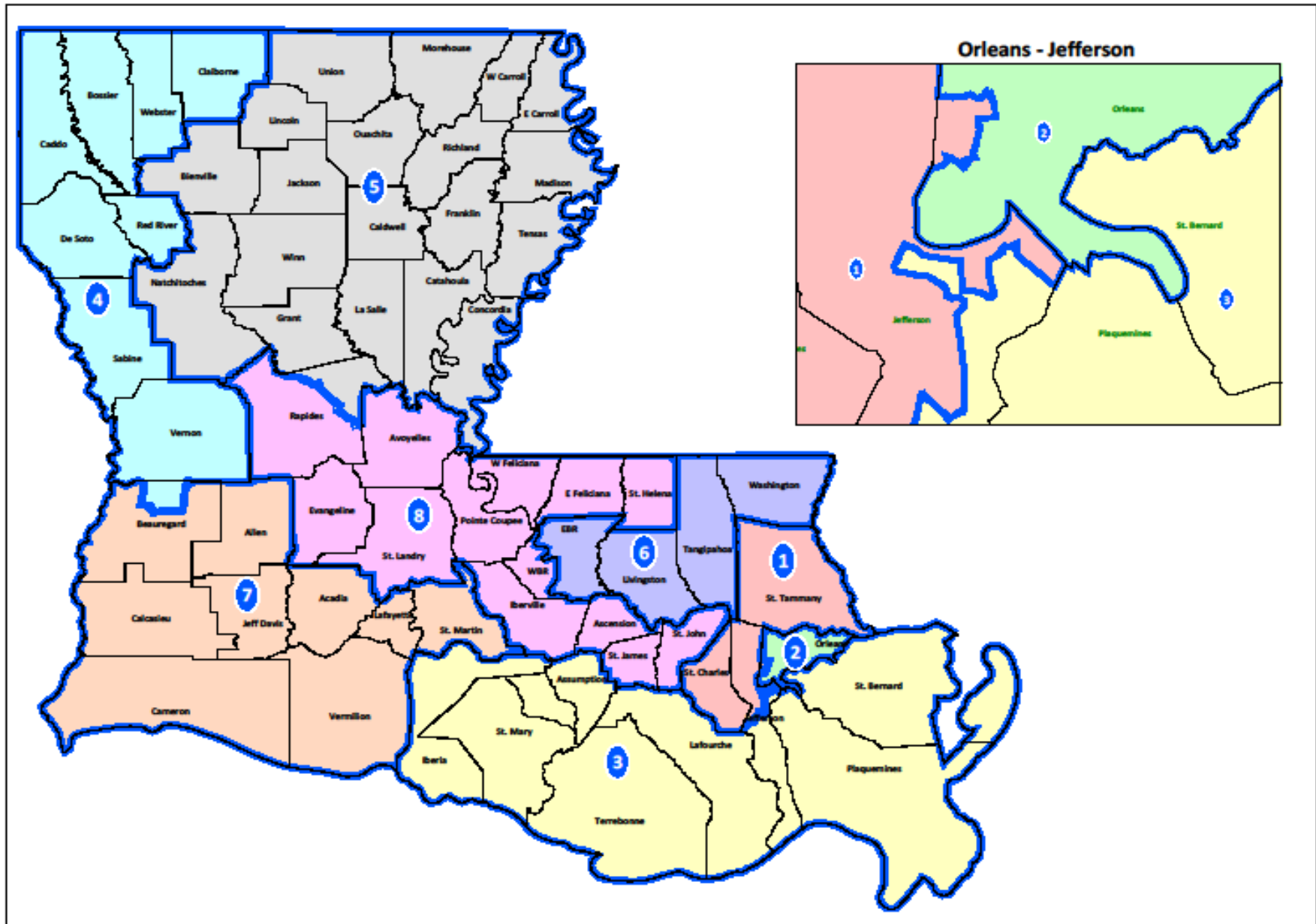
Congress

Ideal Population Thru the Decades*

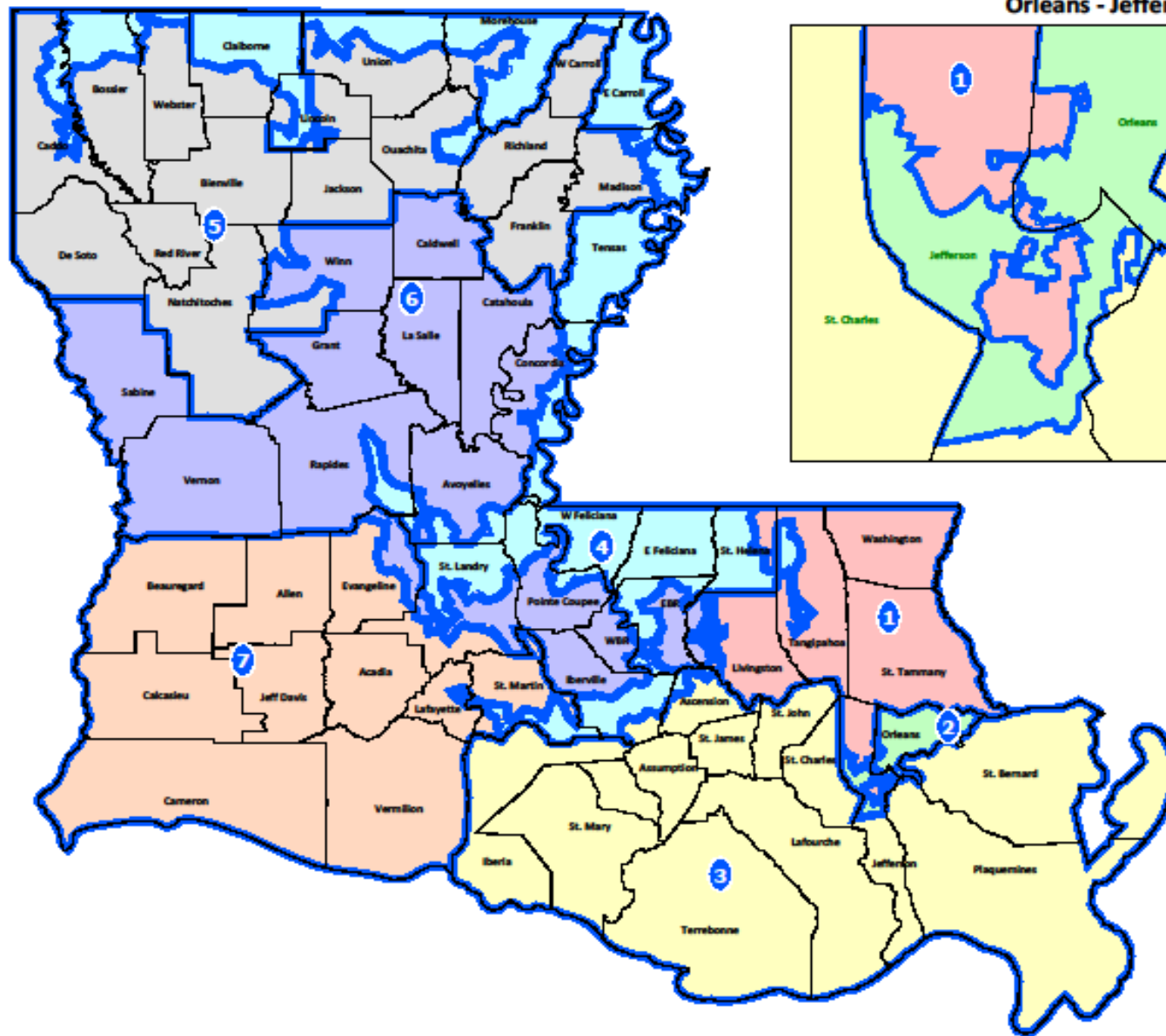
*The 2009 figure is based upon the 2009 Census Estimate and the 2010 figure is based upon the Census Projection

Decade	Districts	Ideal Population
1980	8	525,738
1990	7	602,853
2000	7	638,425
2009*	7	641,725
2009*	6	748,679
2010*	7	667,526
2010*	6	778,780

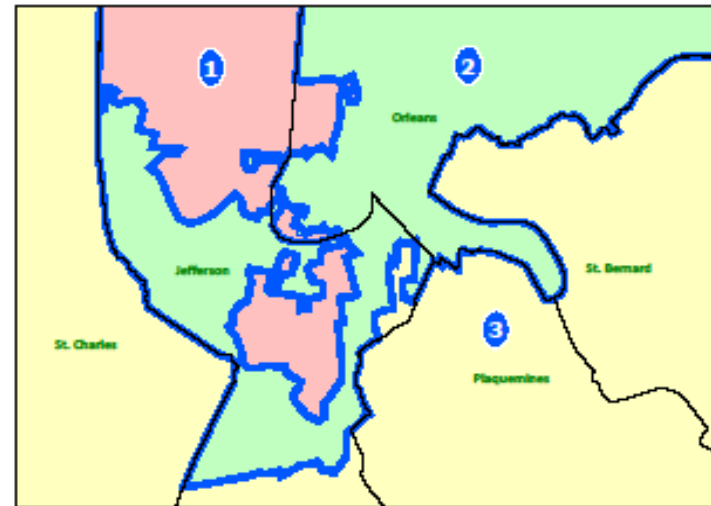
Congress - 1980



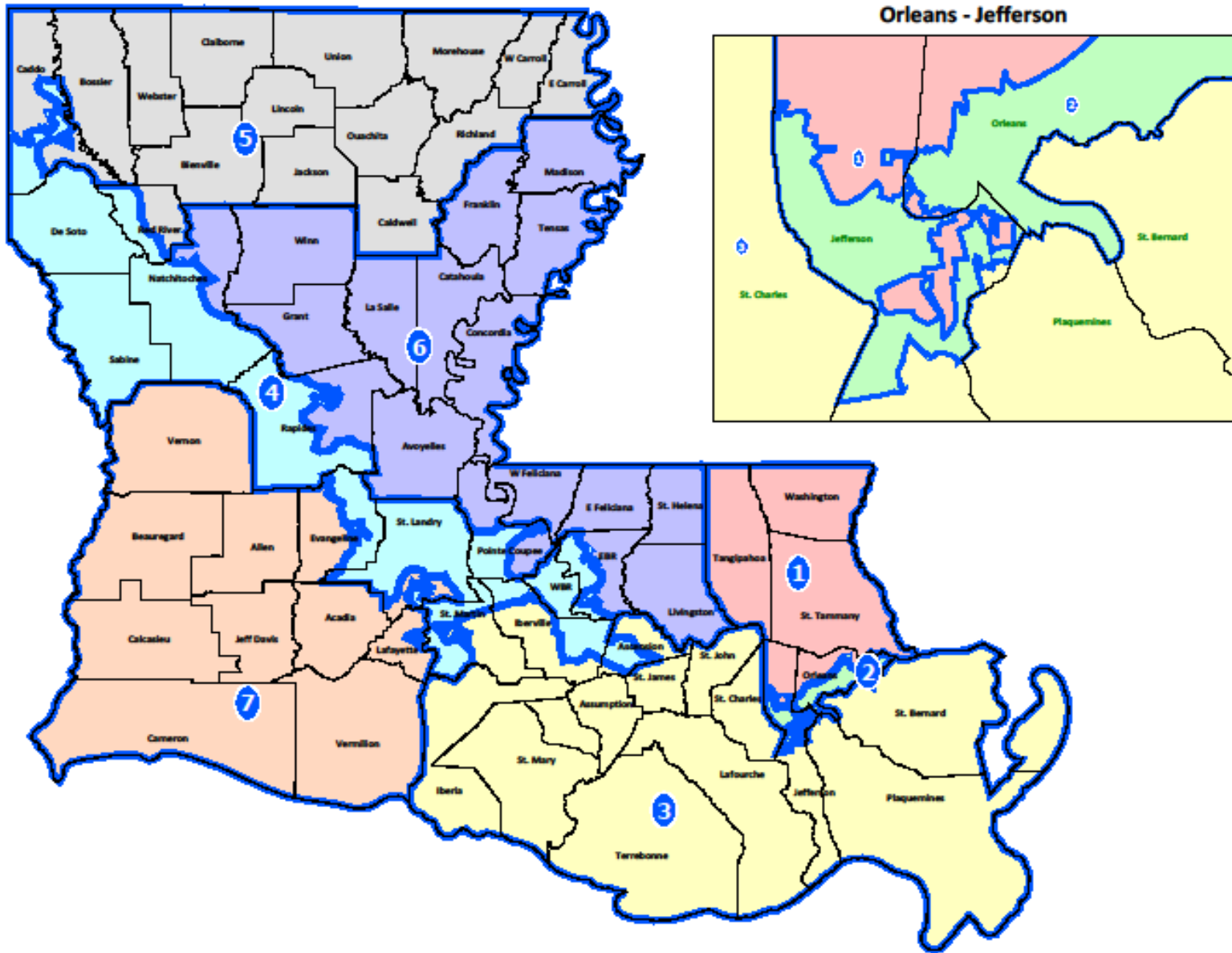
Congress - 1992



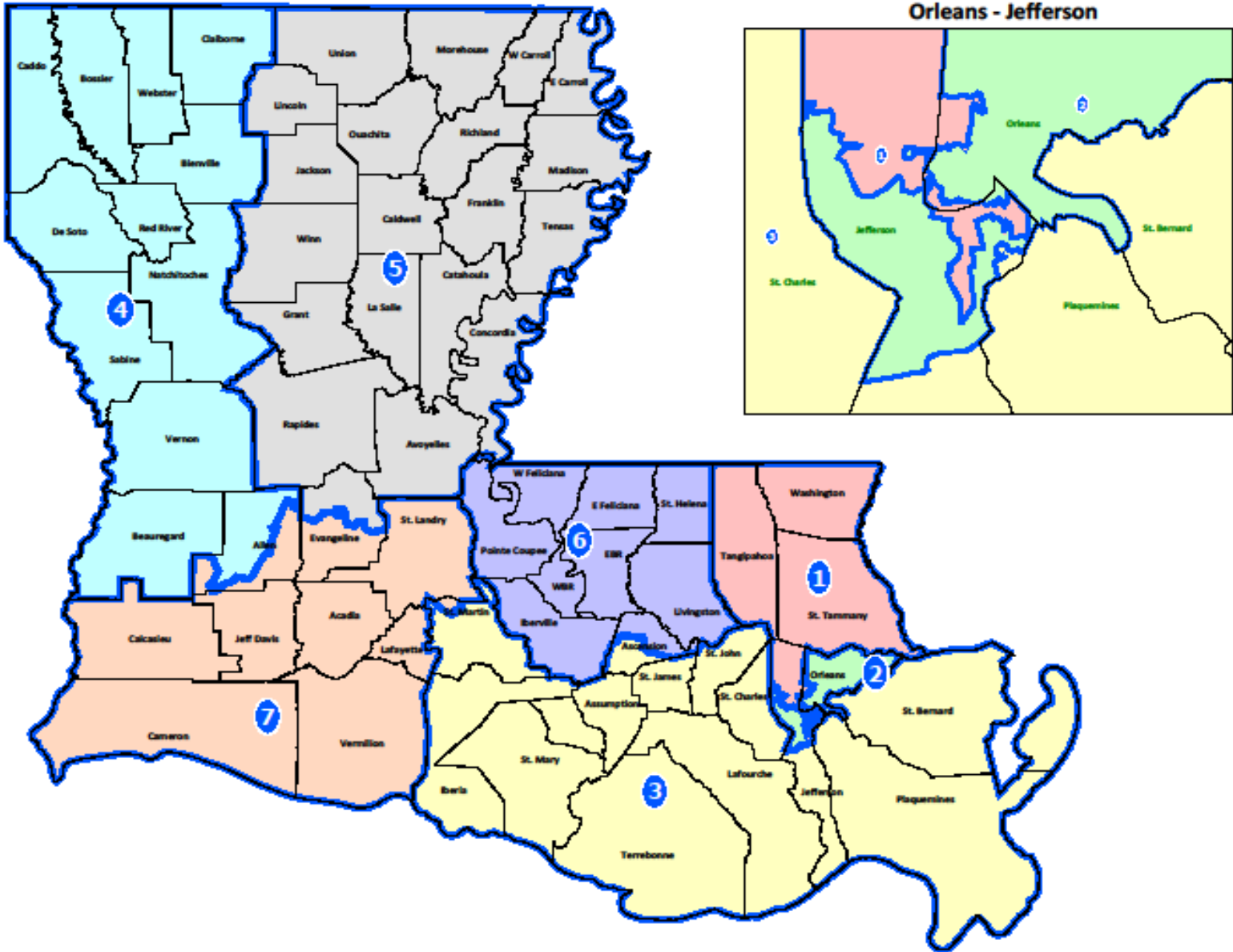
Orleans - Jefferson



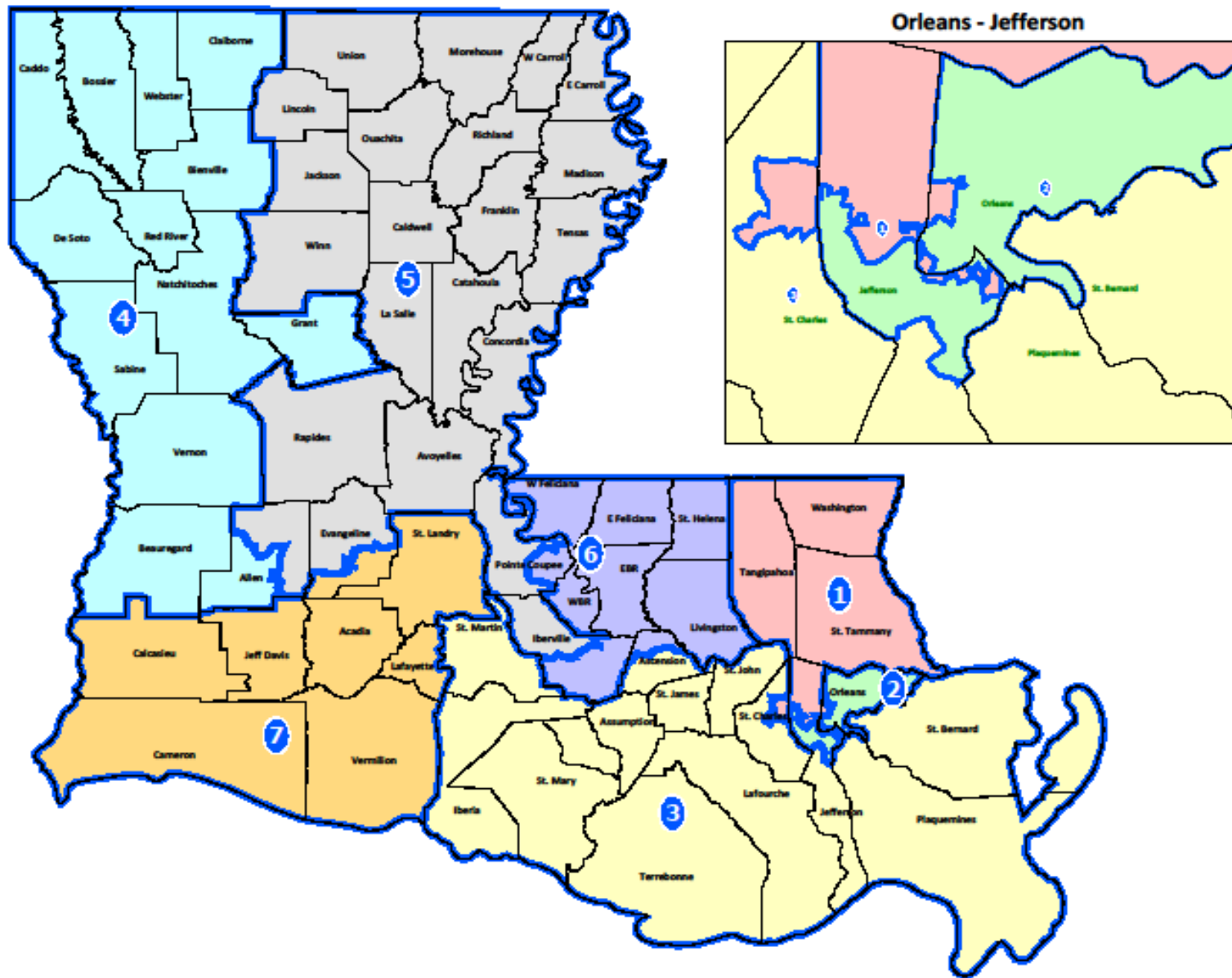
Congress - 1994



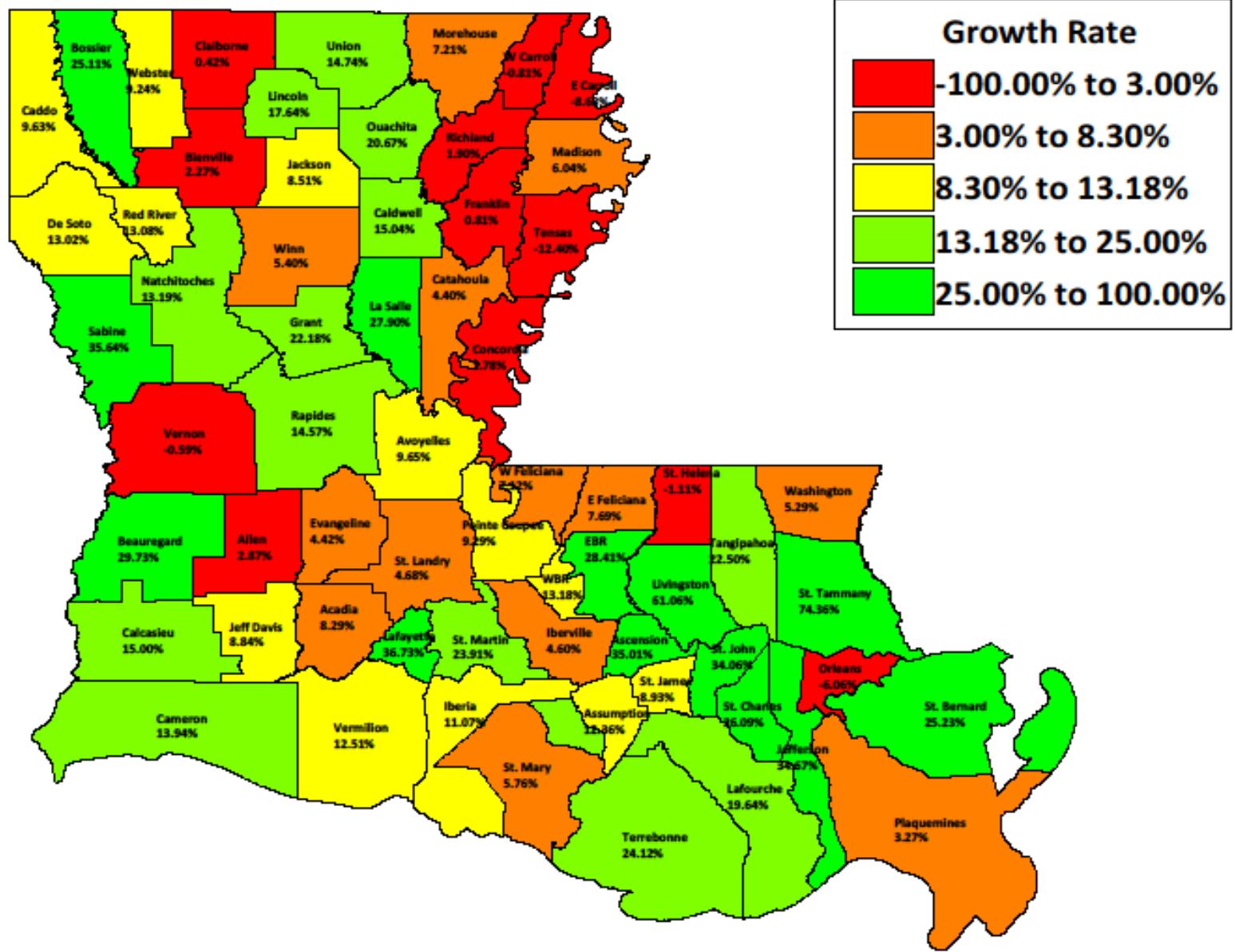
Congress - 1996



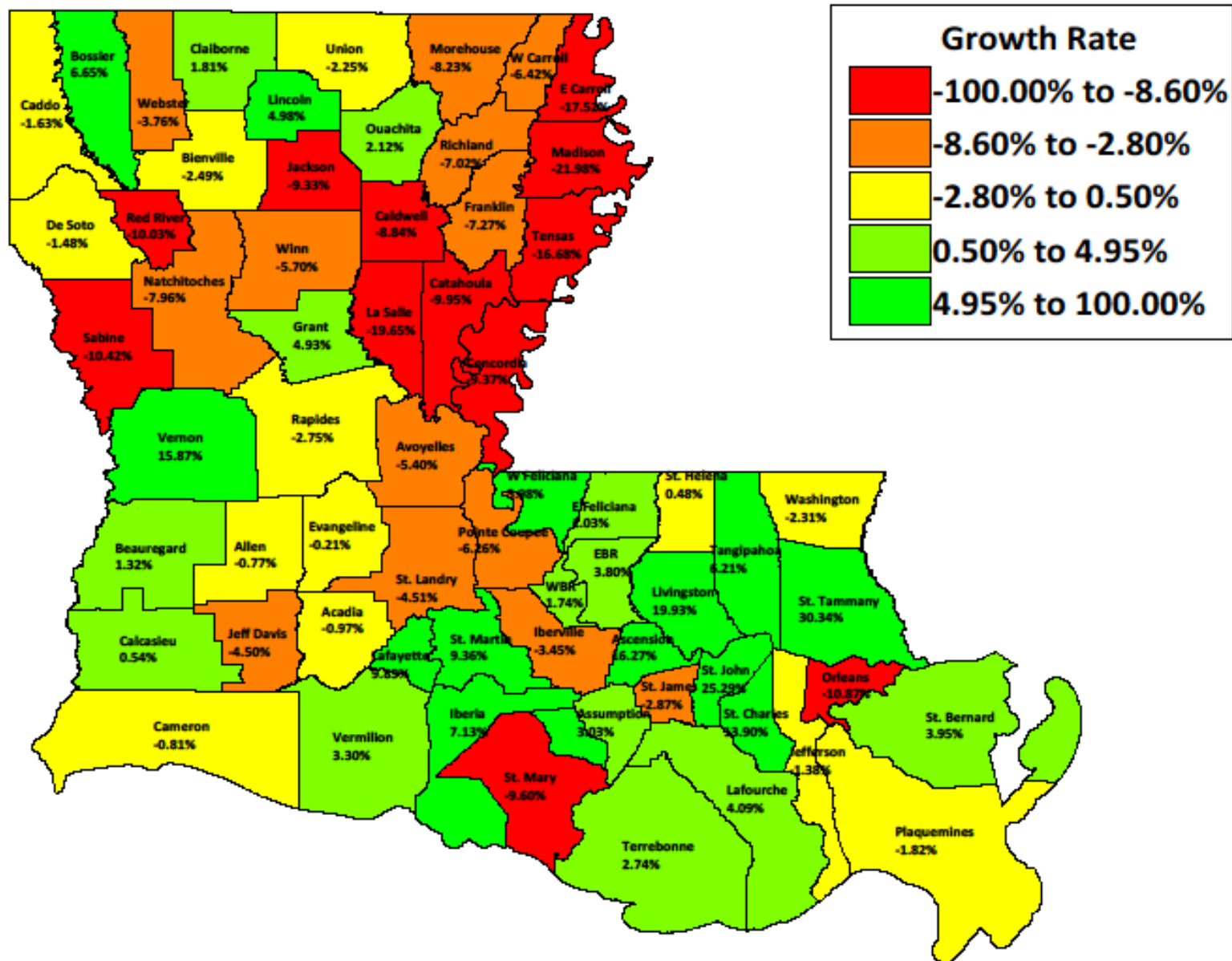
Congress - 2001



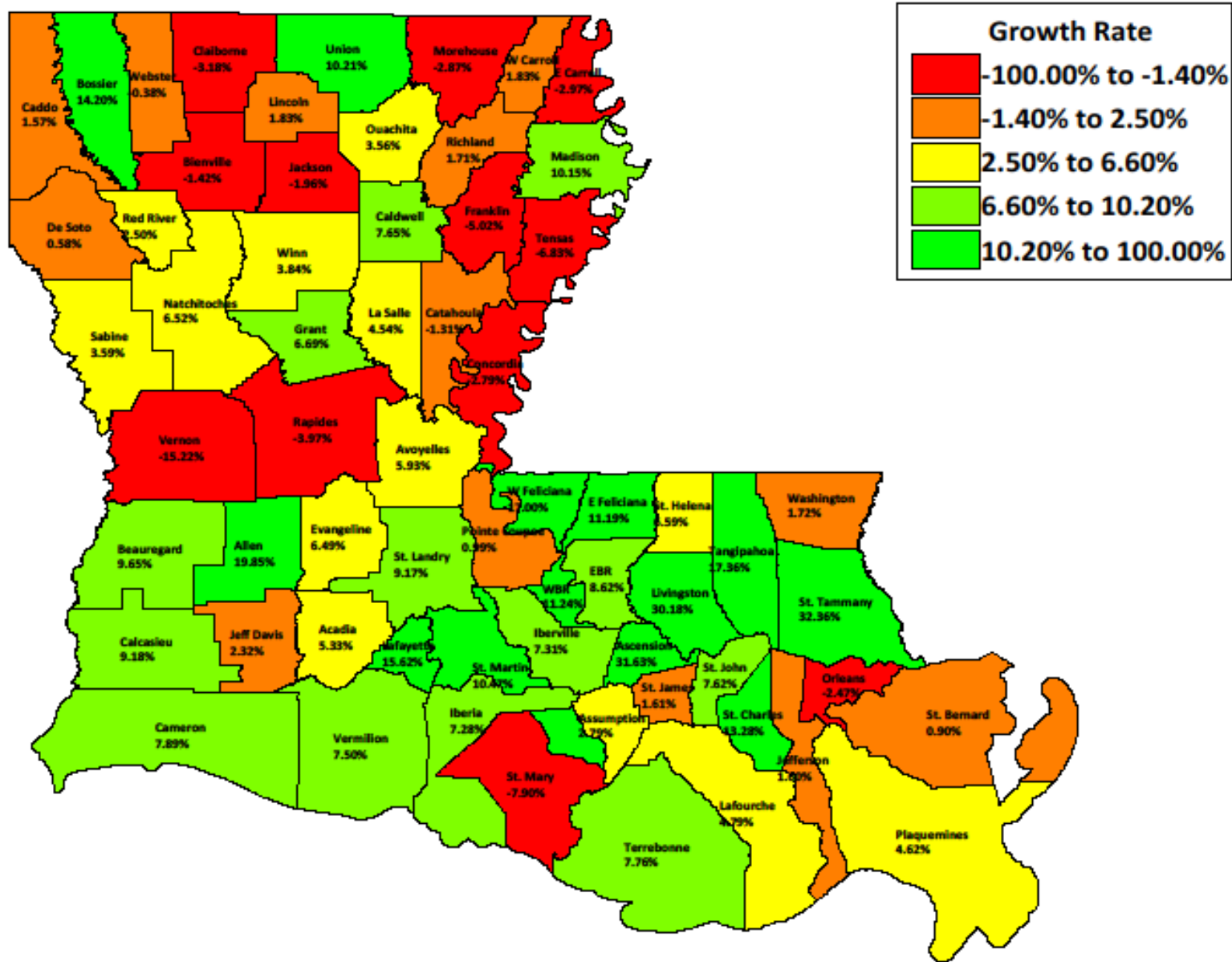
Parish - 1970 To 1980 Census Population Change



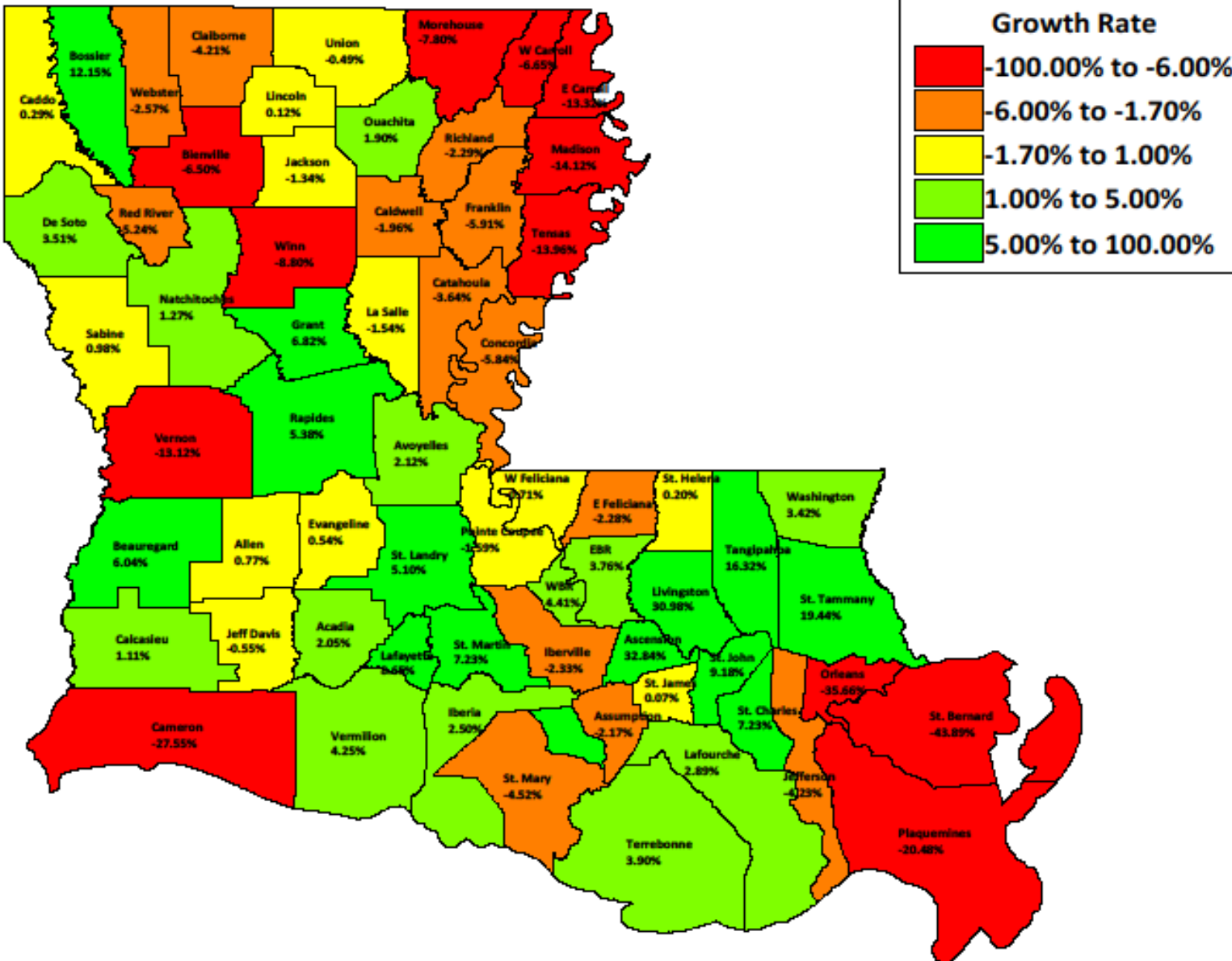
Parish - 1980 To 1990 Census Population Change



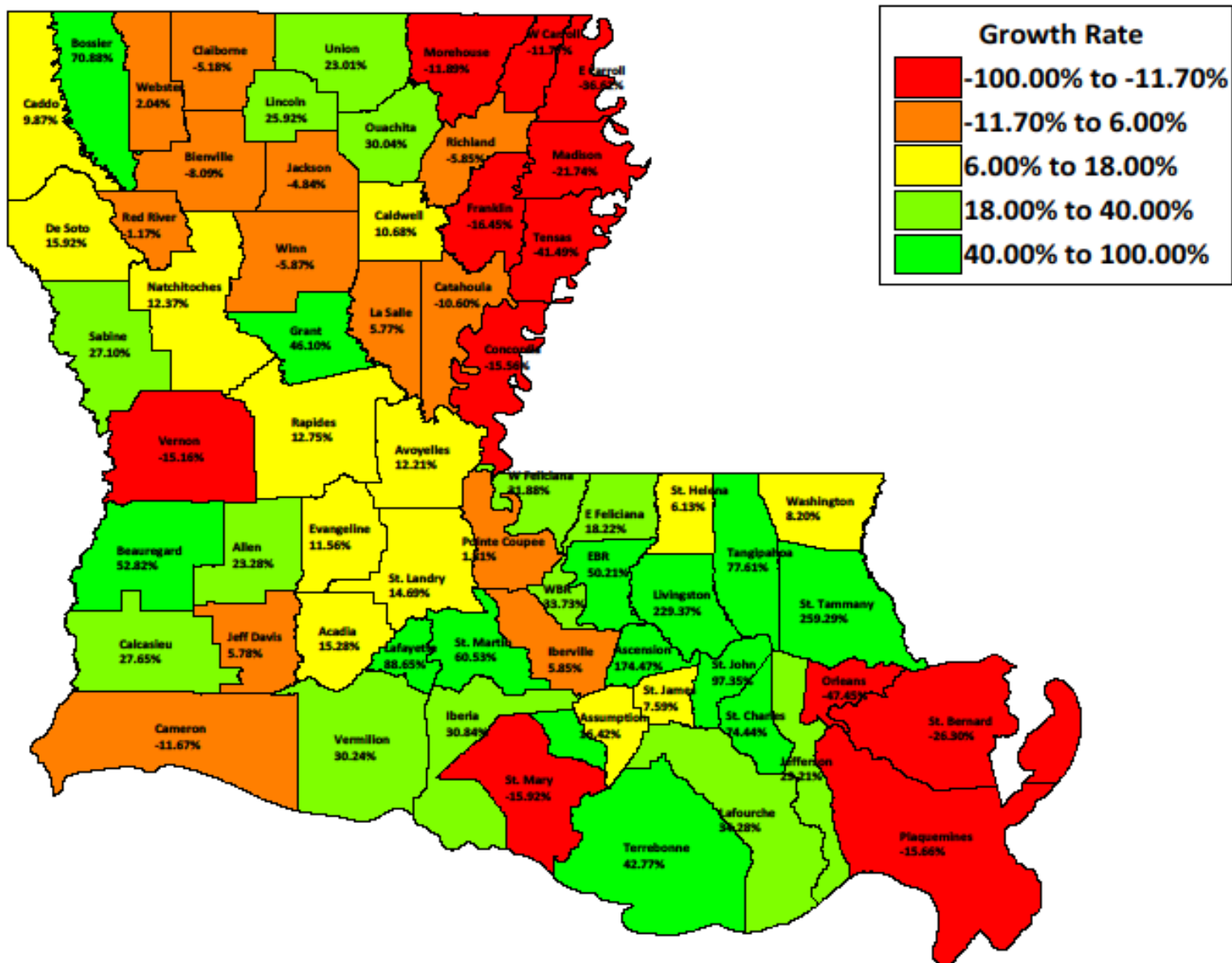
Parish - 1990 To 2000 Census Population Change



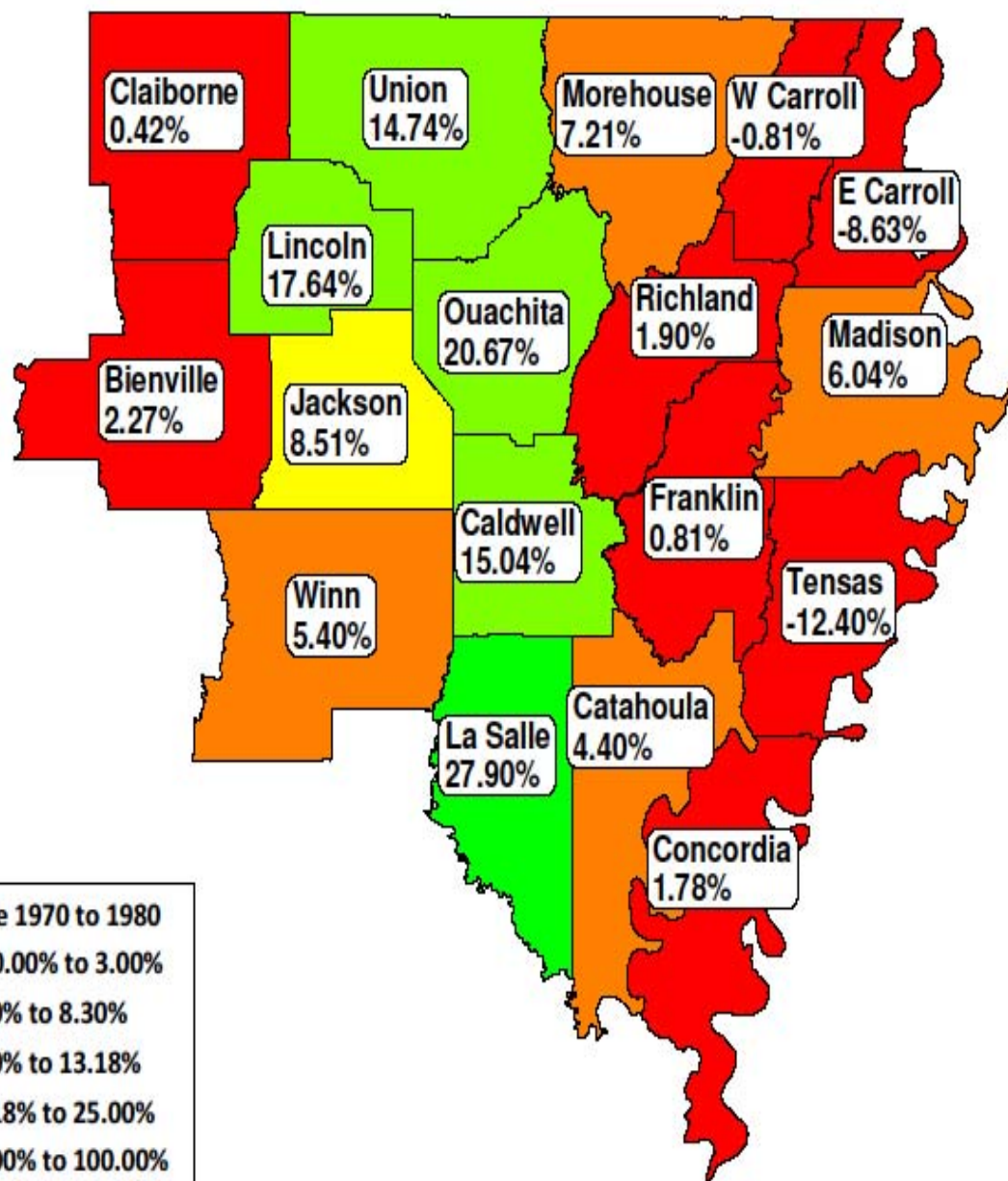
Parish - 2000 Census To 2008 Census Estimate Population Change



Parish - 1970 Census To 2008 Census Estimate Population Change

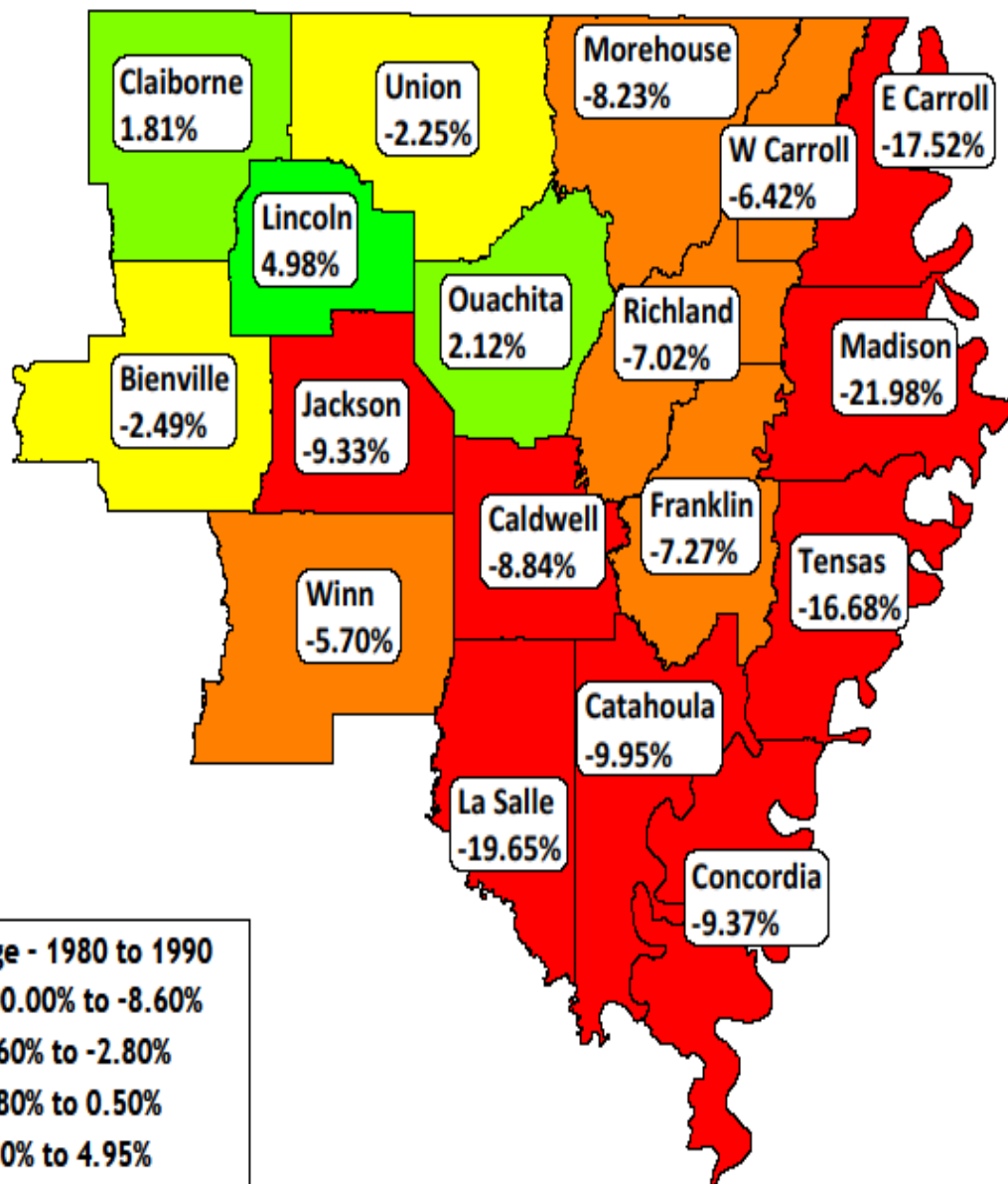


Northeast Region - 1970 To 1980 Census Population Change



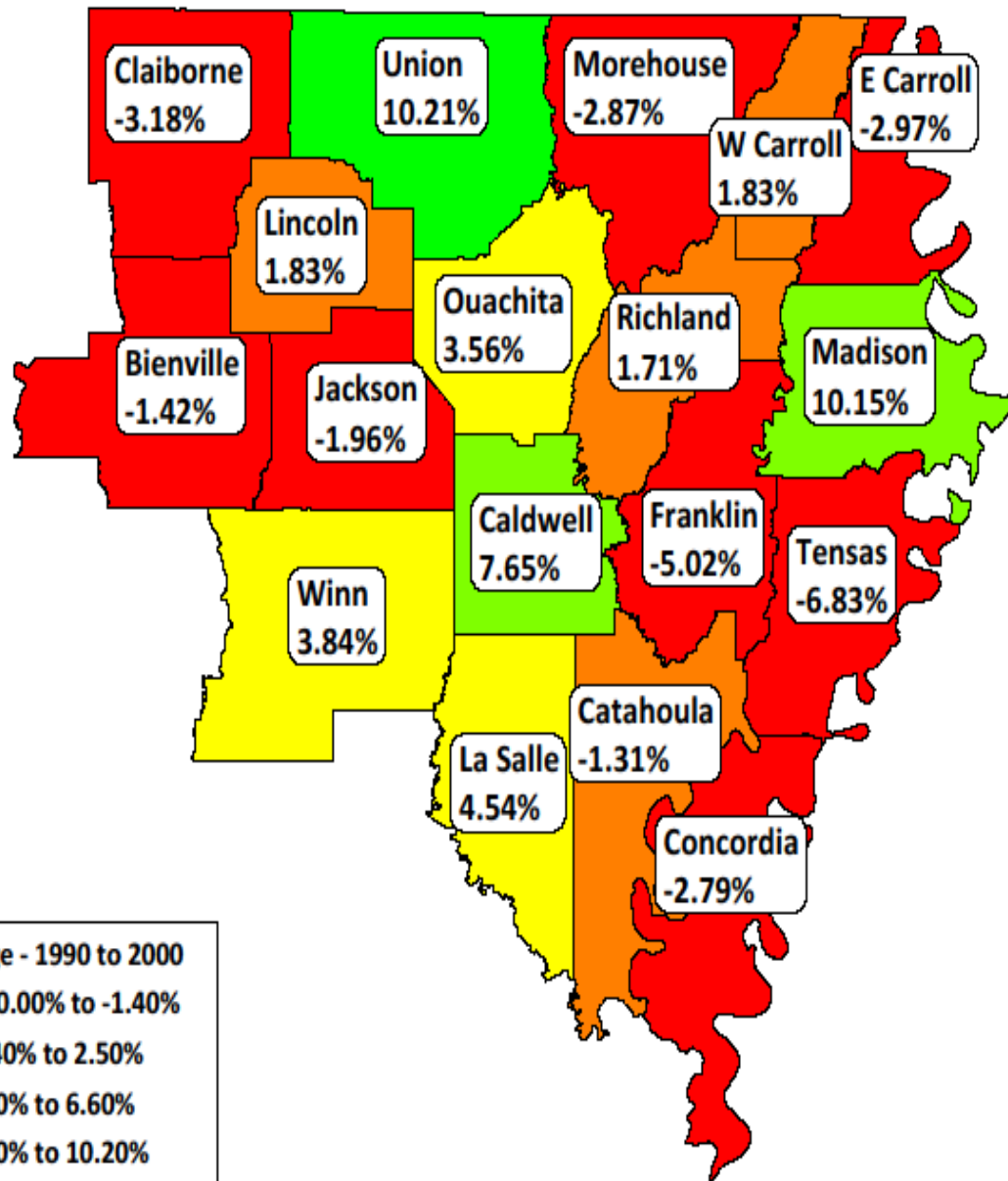
Parish	Population	Change
Tensas	8,525	-1,207
E Carroll	11,772	-1,112
W Carroll	12,922	-106
Claiborne	17,095	71
Franklin	24,141	195
Bienville	16,387	363
Concordia	22,981	403
Richland	22,187	413
Catahoula	12,287	518
Winn	17,253	884
Madison	15,975	910
Jackson	17,321	1,358
Caldwell	10,761	1,407
Morehouse	34,803	2,340
Union	21,167	2,720
La Salle	17,004	3,709
Lincoln	39,763	5,963
Ouachita	139,241	23,854

Northeast Region - 1980 To 1990 Census Population Change



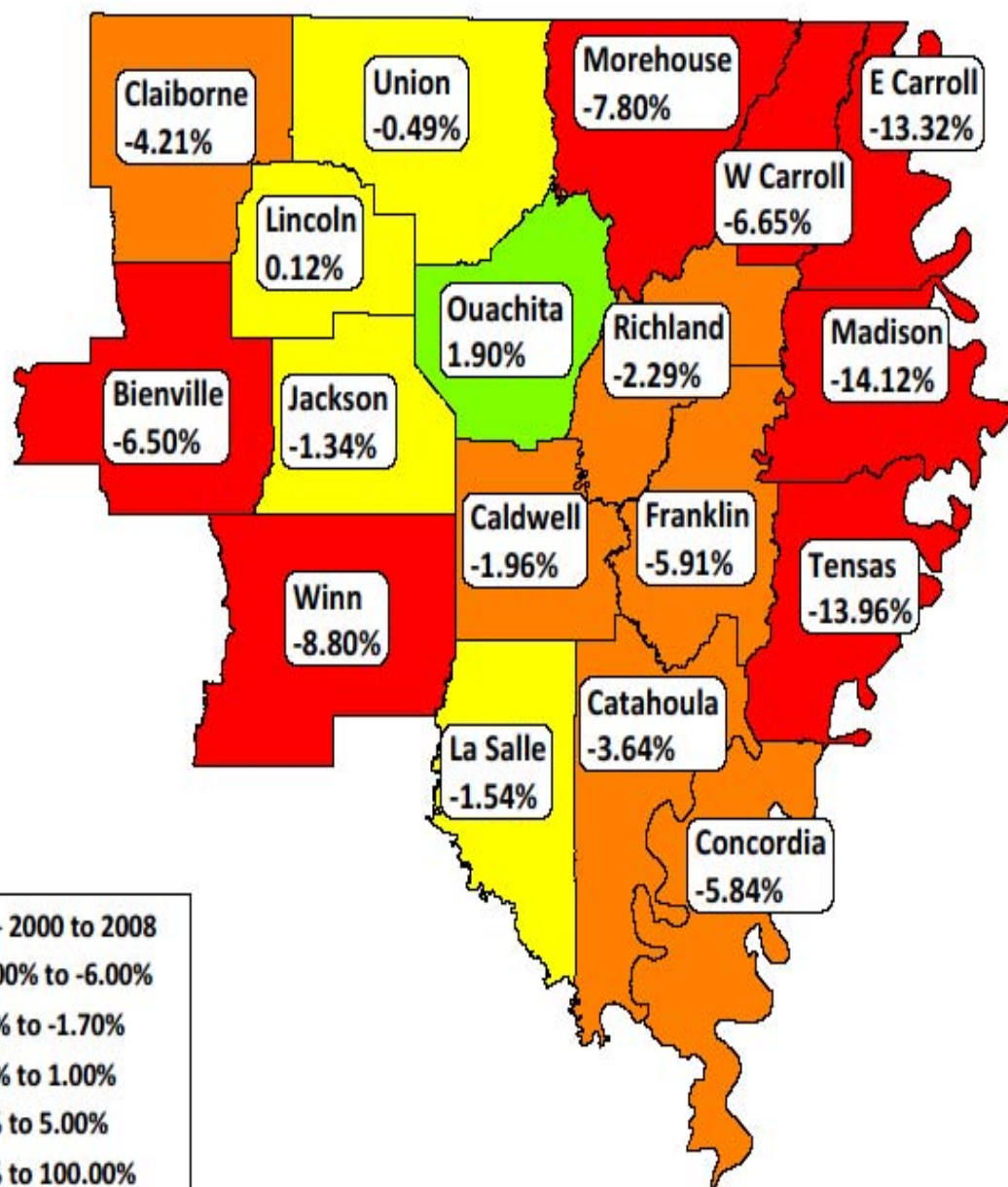
Parish	Population	Change
Madison	12,463	-3,512
La Salle	13,662	-3,342
Morehouse	31,938	-2,865
Concordia	20,828	-2,153
E Carroll	9,709	-2,063
Franklin	22,387	-1,754
Jackson	15,705	-1,616
Richland	20,629	-1,558
Tensas	7,103	-1,422
Catahoula	11,065	-1,222
Winn	16,269	-984
Caldwell	9,810	-951
W Carroll	12,093	-829
Union	20,690	-477
Bienville	15,979	-408
Claiborne	17,405	310
Lincoln	41,745	1,982
Ouachita	142,191	2,950

Northeast Region - 1990 To 2000 Census Population Change



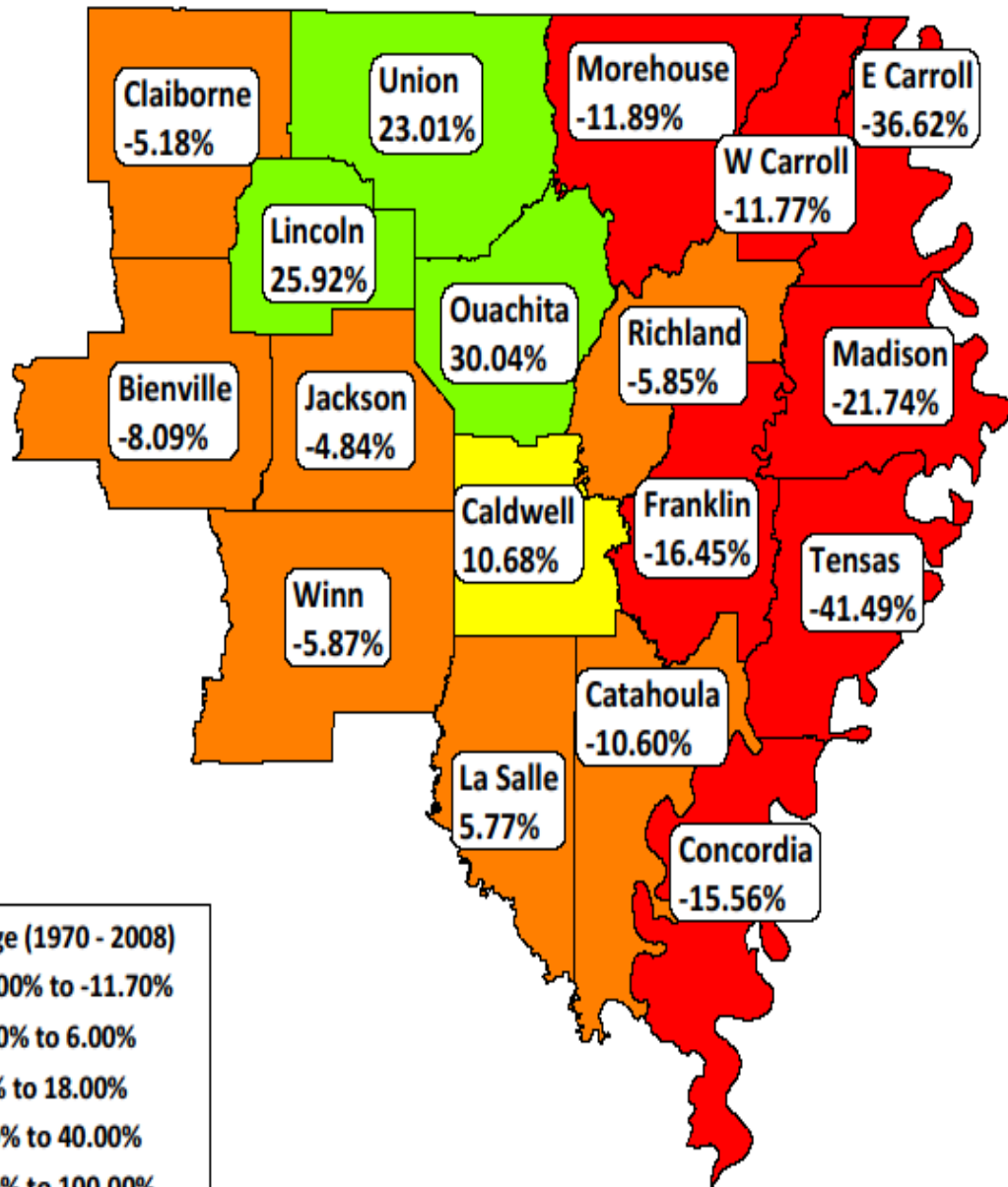
Parish	Population	Change
Franklin	21,263	-1,124
Morehouse	31,021	-917
Concordia	20,247	-581
Claiborne	16,851	-554
Tensas	6,618	-485
Jackson	15,397	-308
E Carroll	9,421	-288
Bienville	15,752	-227
Catahoula	10,920	-145
W Carroll	12,314	221
Richland	20,981	352
La Salle	14,282	620
Winn	16,894	625
Caldwell	10,560	750
Lincoln	42,509	764
Madison	13,728	1,265
Union	22,803	2,113
Ouachita	147,250	5,059

Northeast Region - 2000 Census To 2008 Census Estimate Population Change



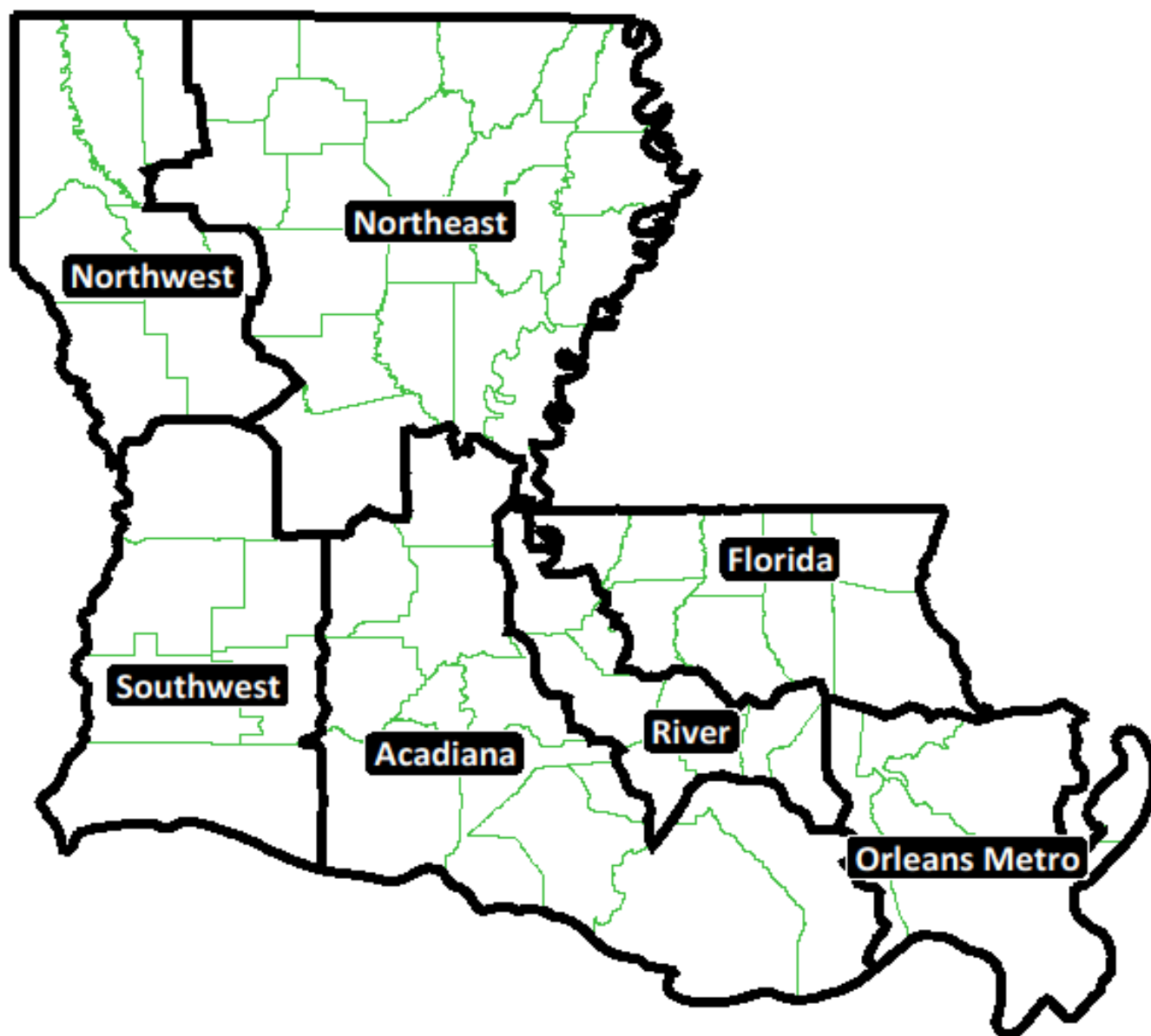
Parish	Estimate	Change
Morehouse	28,602	-2,419
Madison	11,790	-1,938
Winn	15,408	-1,486
Franklin	20,006	-1,257
E Carroll	8,166	-1,255
Concordia	19,064	-1,183
Bienville	14,728	-1,024
Tensas	5,694	-924
W Carroll	11,495	-819
Claiborne	16,142	-709
Richland	20,501	-480
Catahoula	10,522	-398
La Salle	14,062	-220
Caldwell	10,353	-207
Jackson	15,191	-206
Union	22,692	-111
Lincoln	42,561	52
Ouachita	150,051	2,801

Northeast Region - 1970 Census To 2008 Census Estimate Population Change



Parish	Change	% Change
Tensas	-4,038	-41.49%
E Carroll	-4,718	-36.62%
Madison	-3,275	-21.74%
Franklin	-3,940	-16.45%
Concordia	-3,514	-15.56%
Morehouse	-3,861	-11.89%
W Carroll	-1,533	-11.77%
Catahoula	-1,247	-10.60%
Bienville	-1,296	-8.09%
Winn	-961	-5.87%
Richland	-1,273	-5.85%
Claiborne	-882	-5.18%
Jackson	-772	-4.84%
La Salle	767	5.77%
Caldwell	999	10.68%
Union	4,245	23.01%
Lincoln	8,761	25.92%
Ouachita	34,664	30.04%

Louisiana Regions



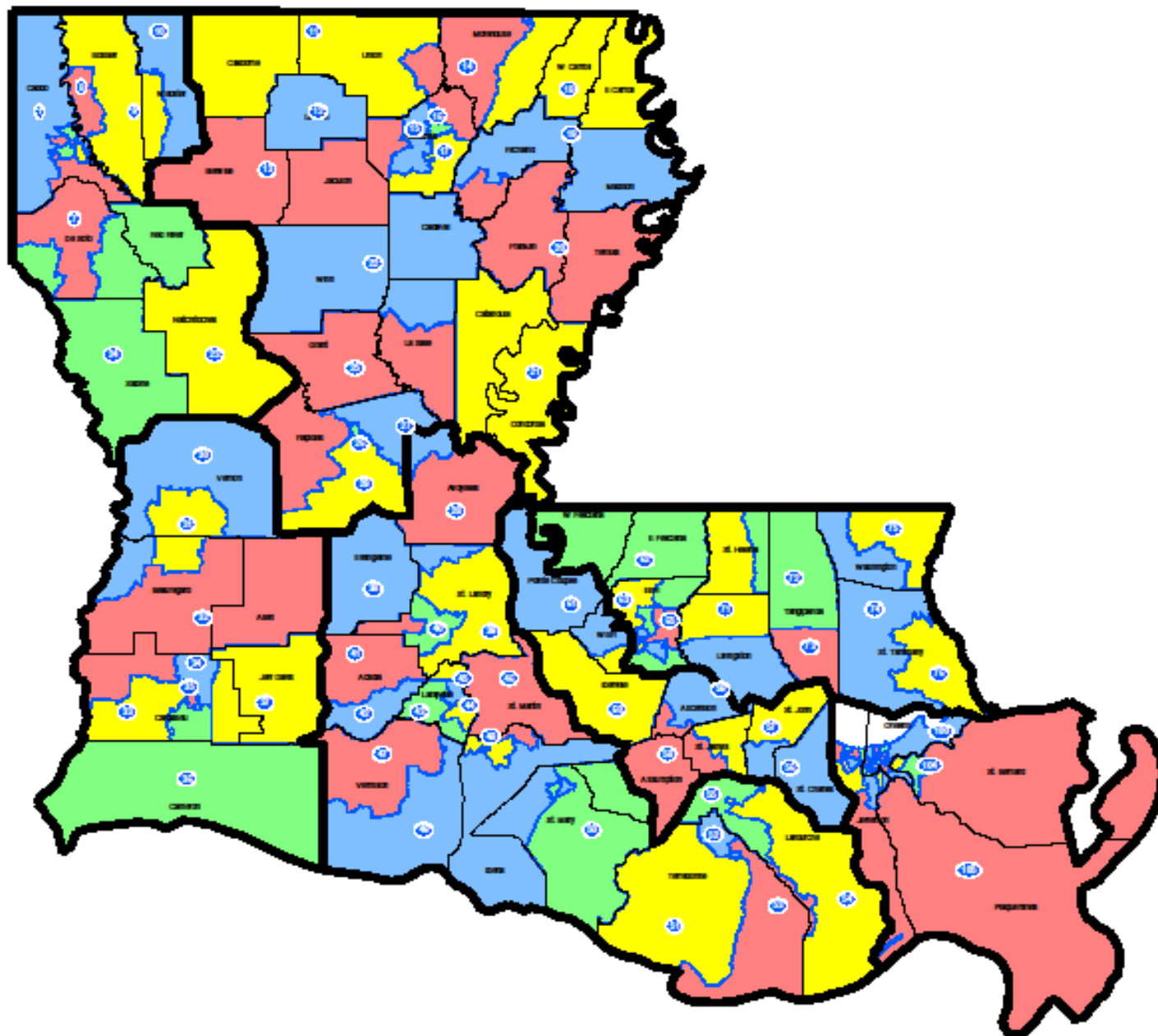
House District Ideal Population Thru the Decades*

*The 2009 figure is based upon the 2009 Census Estimate and the 2010 figure is based upon the Census Projection

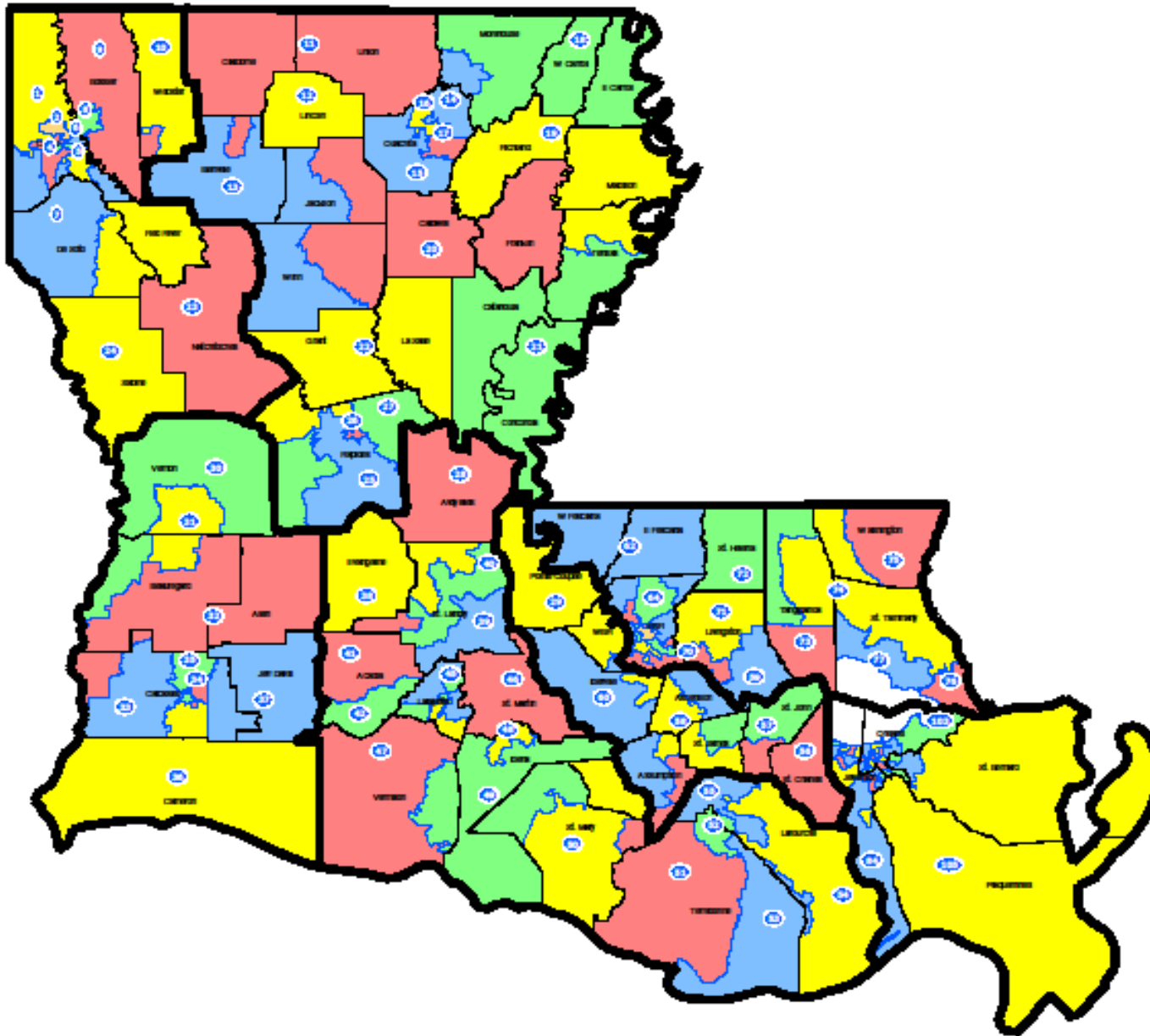


- 1970 Ideal: 34,697
- 1980 Ideal: 40,037
- 1990 Ideal: 40,190
- 2000 Ideal: 42,561
- 2009 Ideal: 42,781*
- 2010 Ideal: 43,930*

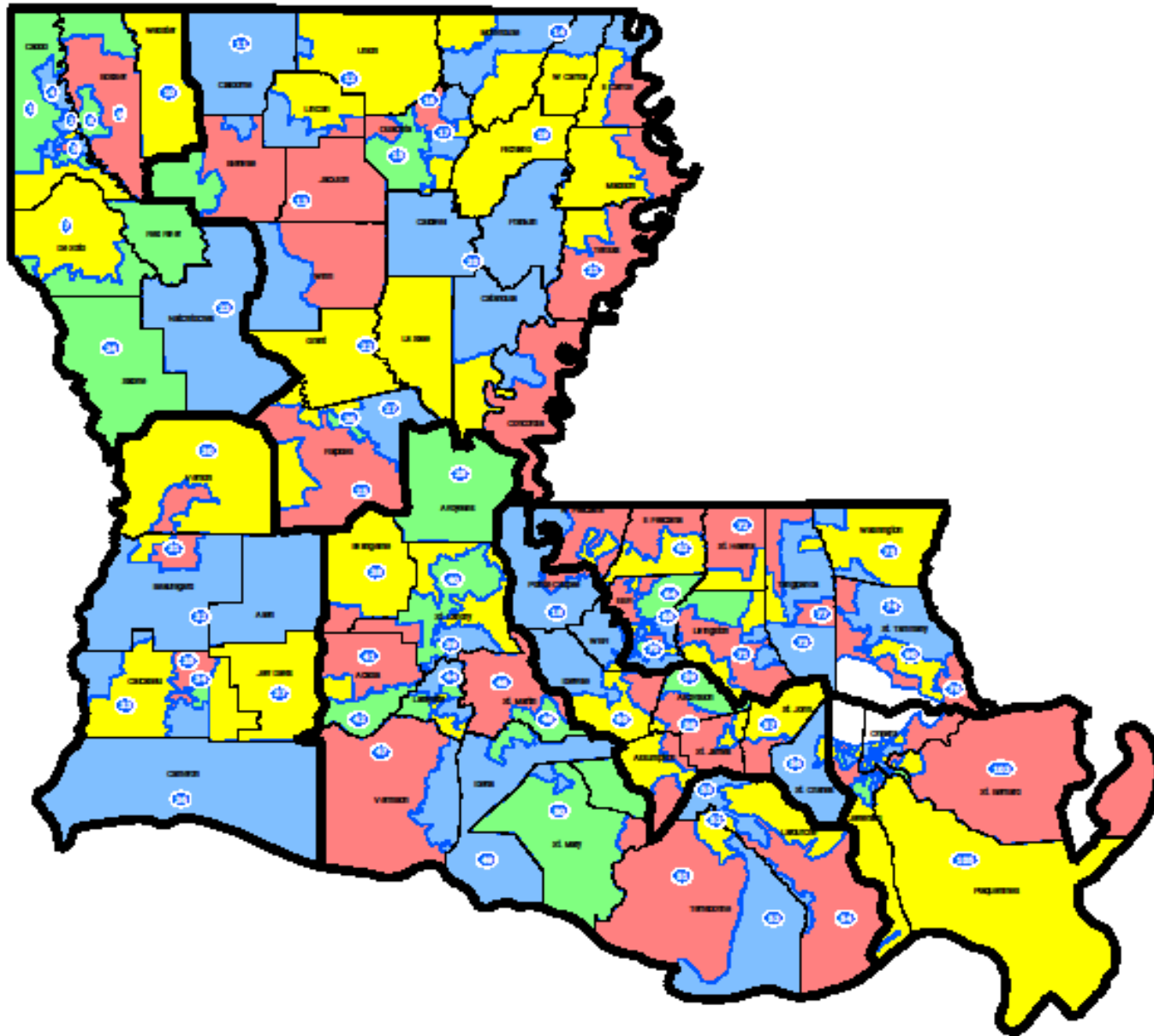
House 1970



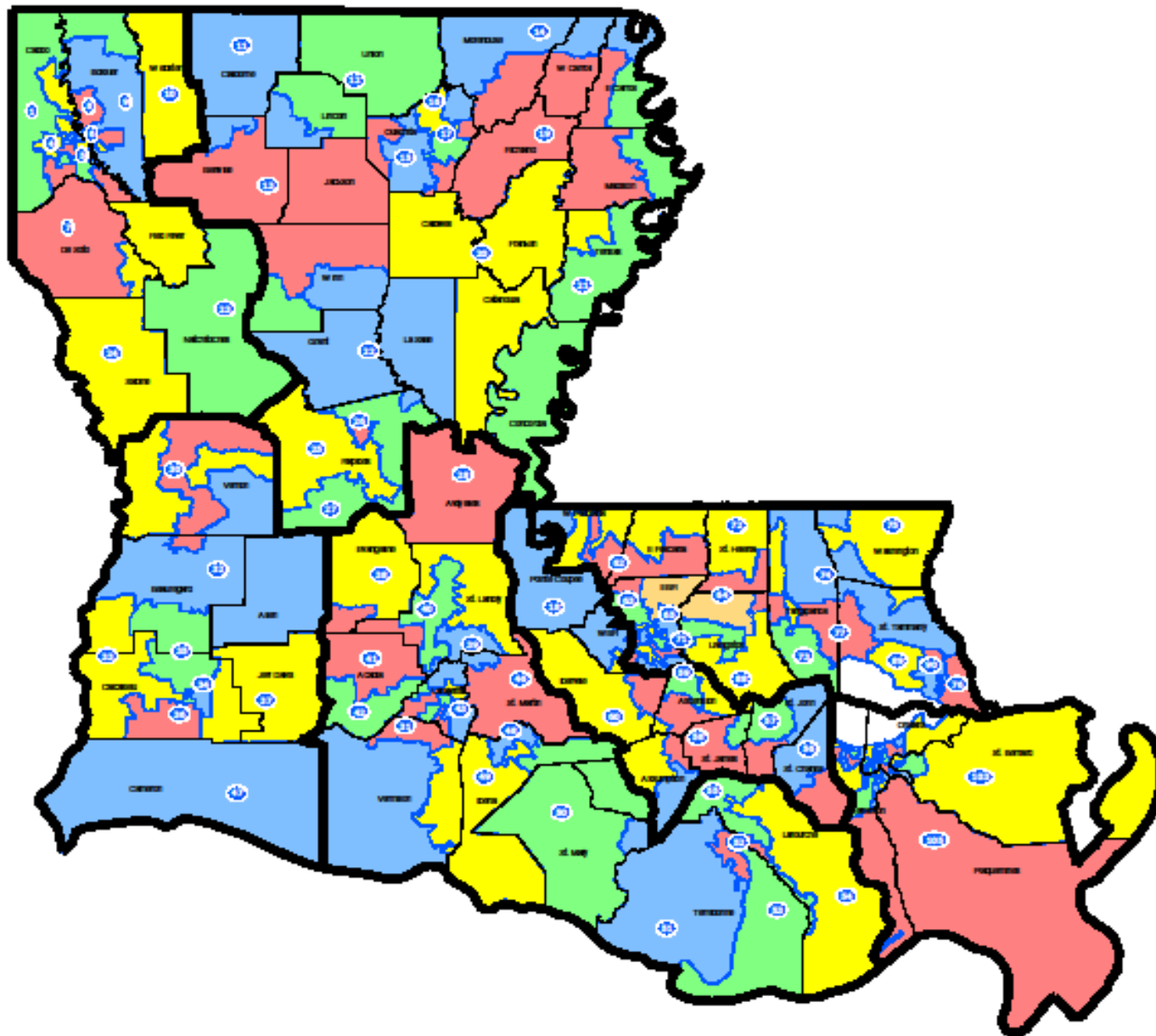
House 1980



House 1990



House 2000

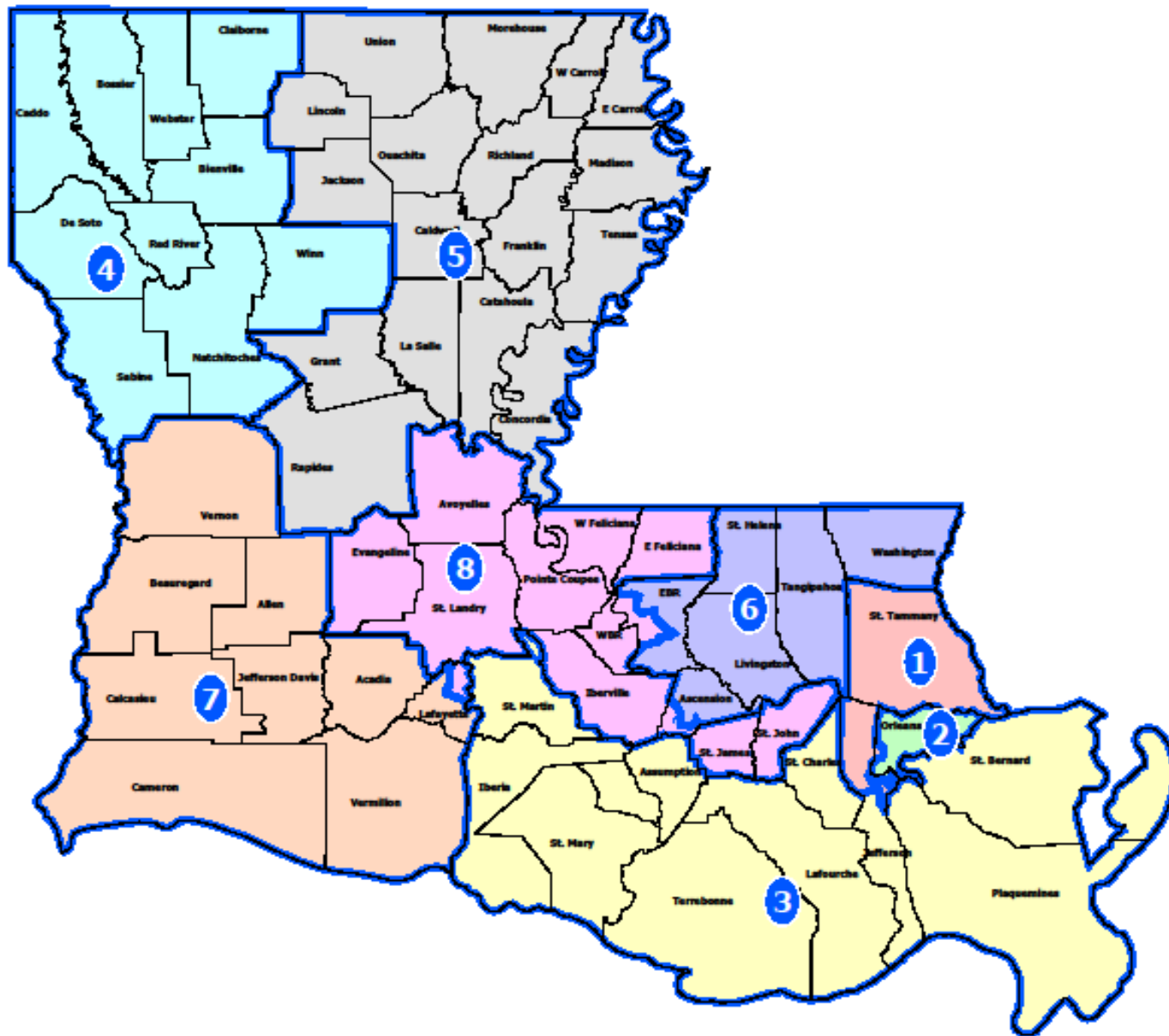


BESE Ideal District Population

*The 2009 figure is based upon the 2009 Census Estimate and the 2010 figure is based upon the Census Projection

- 1990 Ideal: 527,496
- 2000 Ideal: 558,622
- 2009 Ideal: 561,509*
- 2010 Ideal: 576,584*

BESE Districts



Supreme Court Ideal District Population

*The 2009 figure is based upon the 2009 Census Estimate and the 2010 figure is based upon the Census Projection

1990 Ideal: 602,853

2000 Ideal: 638,425**

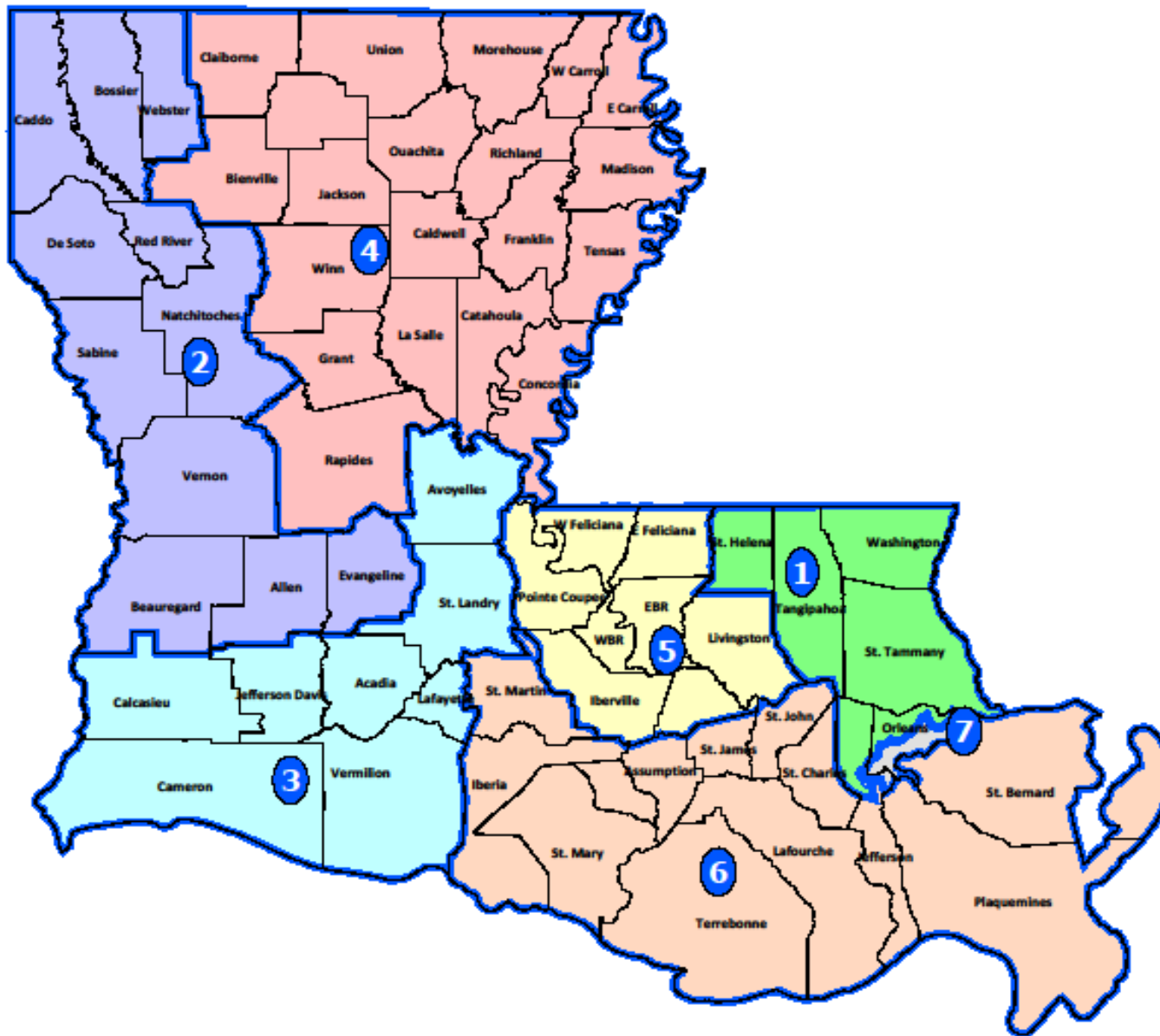
2009 Ideal: 641,725*

2010 Ideal: 658,954*



(**Note: Supreme Court Districts were not redrawn following the 2000 Census)

LA Supreme Court





Public Service Commission Ideal District Population

*The 2009 figure is based upon the 2009 Census Estimate and the 2010 figure is based upon the Census Projection

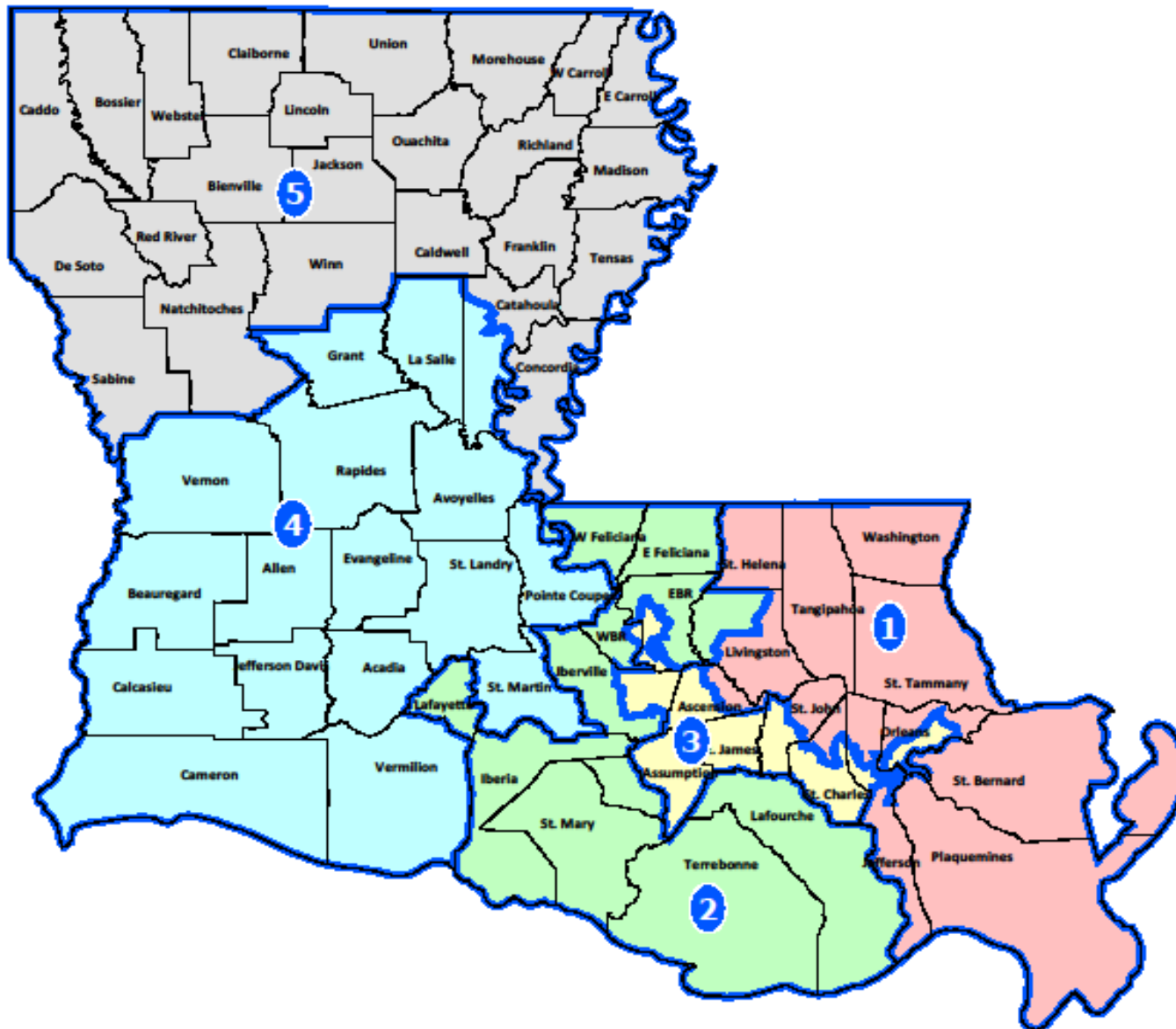
1990 Ideal: 843,994

2000 Ideal: 893,795

2009 Ideal: 898,415*

2010 Ideal: 922,535*

PSC Districts



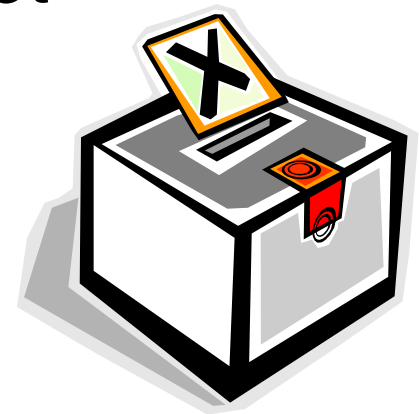
Discrimination Against Minorities

- Section 5 of the Voting Rights Act
 - In covered jurisdictions, plans must be precleared
 - Louisiana IS a covered jurisdiction
 - As are ALL of its subdivisions
 - Do not allow Retrogression
 - “Any discriminatory purpose”
 - No discriminatory effect
 - No requirement to maximize minority representation



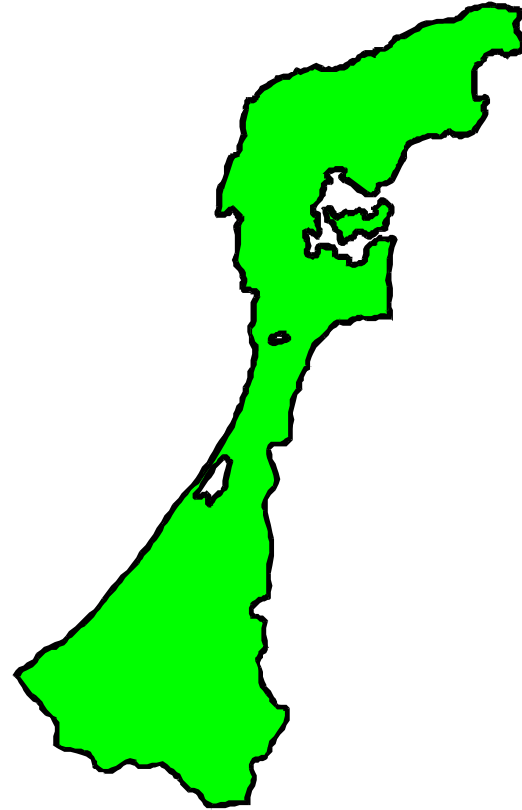
Discrimination Against Minorities

- Section 2 of the Voting Rights Act
 - National standard
 - No discriminatory effect
 - Gingles preconditions
 - Totality of the circumstances
 - Districts in which a minority has a fair chance to win

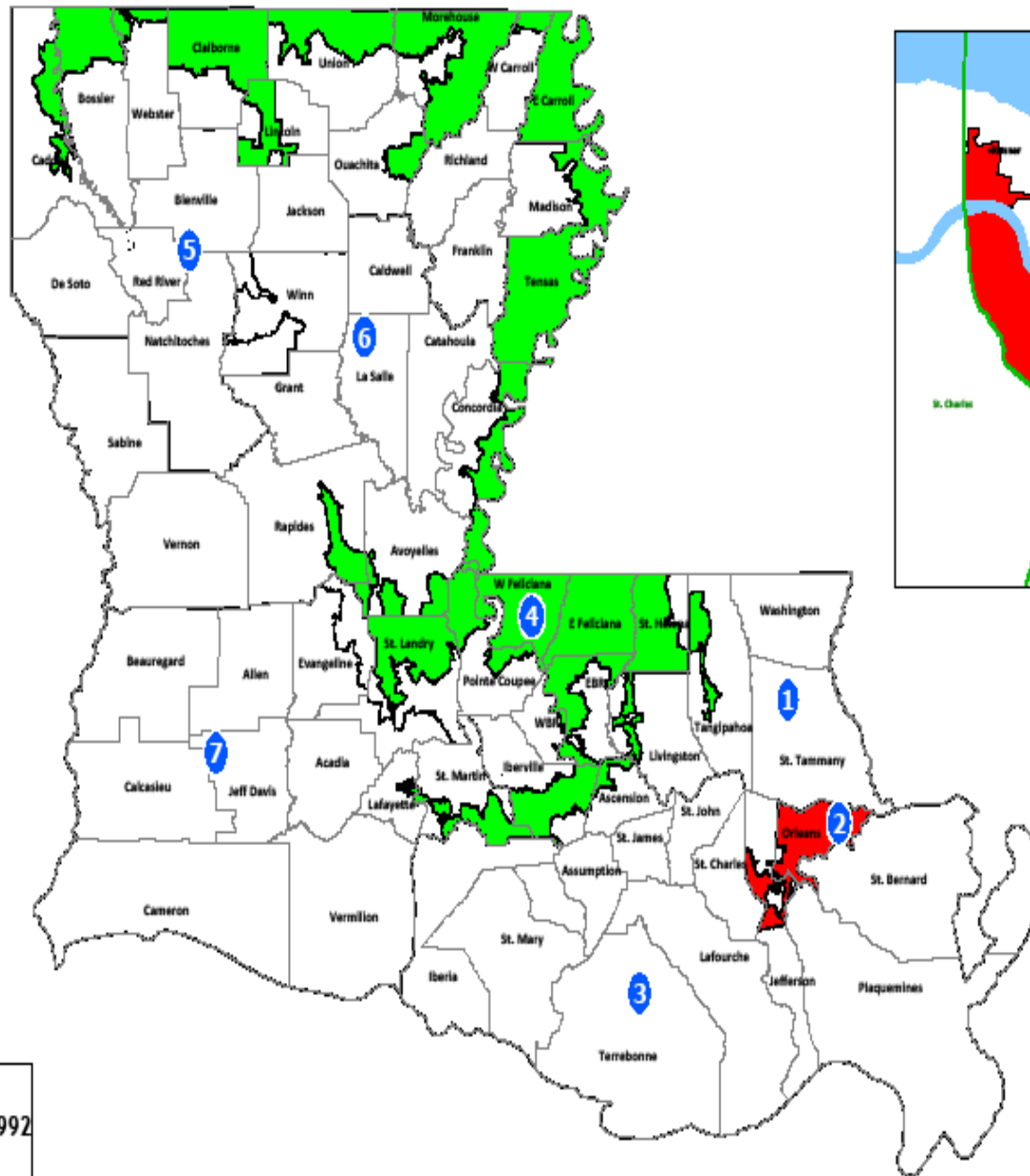


Racial Gerrymandering

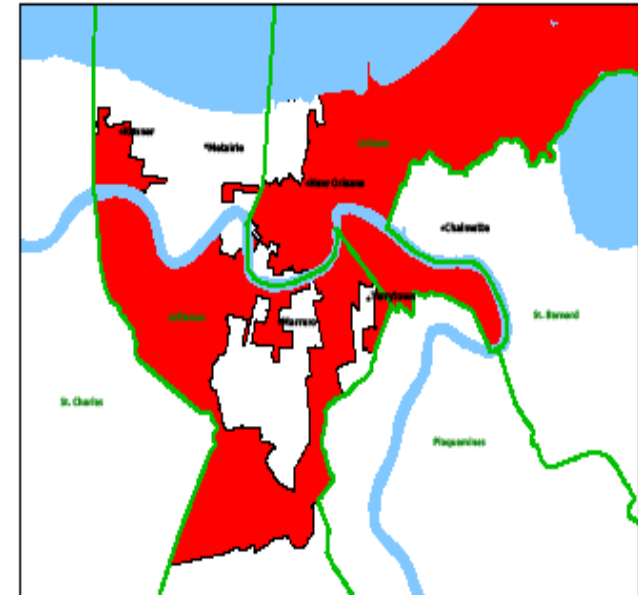
- What is racial gerrymandering?
- Equal Protection Clause
- What was the rationale in drawing district lines?



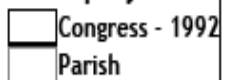
Congress - 1992



Orleans - Jefferson



Map layers



Racial Gerrymandering (cont.)

- Race-conscious redistricting is not *per se* unconstitutional
- Consideration of race-neutral districting principles
 - Compactness, contiguity, communities of interest, respect for political subdivisions, protection of core districts

Racial Gerrymandering (cont.)

- If race is found to be the “predominant overriding factor,” strict scrutiny will apply
- What must a state prove for the plan to survive strict scrutiny?
 - A law narrowly tailored to serve a compelling state interest

WEB Addresses of Interest

- House Redistricting Home Page
 - http://house.louisiana.gov/H_Redistricting2011/
- Page for this Educational Presentation
 - http://house.louisiana.gov/H_Redistricting2011/default_RedistMeetings2011.htm

Key Contacts

House & Governmental Affairs Committee
225-342-2403

- [Shawn O'Brien](#) Secretary
225-342-2403
- [Patricia Lowrey – Dufour](#) Legislative Analyst
225-342-2396
- [Mark Mahaffey](#) Attorney
225-342-2598
- [Alfred Speer](#) Clerk of the House
225-342-7259
- [Dr. William Blair](#) Demographer
225-342-2591