



**Redistricting in Louisiana
Past & Present
Regional Educational
Presentation**

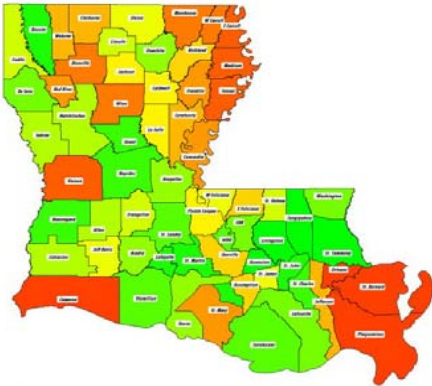
Slidell

January 26, 2010



To get more information regarding the Louisiana House of Representatives redistricting process go to:

http://house.louisiana.gov/H_Redistricting2011



Fan “Louisiana House of Representatives Redistricting” on Facebook

This PowerPoint presentation is available now at:

http://house.louisiana.gov/H_Redistricting2011/default_RedistMeetings2011.htm

2010 Census Presentation

Muriel Laws

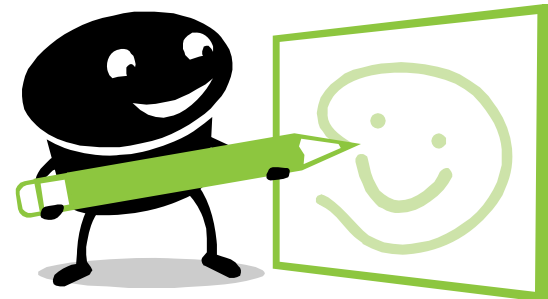
Partnership Specialist, U. S. Census Bureau

What is Redistricting?

- Reapportionment means



- Redistricting means



Districts

- House & Senate districts
- Congressional districts
- P.S.C. districts
- B.E.S.E. districts
- Supreme Court districts
- Election districts of lower courts



Legislature's Responsibility

- Redistricting is undertaken every 10 years following the federal decennial census
- New redistricting plans are based on the latest decennial population counts



Why?

- Apportionment of Congress
- Article III, Section 6 of the Constitution of La.
- 14th Amendment of the U.S. Constitution



LEGAL ISSUES

- U. S. Constitution
- Voting Rights Act of 1965
- Louisiana Constitution
- Louisiana Statutes



LEGAL ISSUES

U. S. Constitution

- **Population Equality**
 - One Person, One Vote



LEGAL ISSUES

Population Equality -- One Person, One Vote

- Congress
 - Article I, Section 2 and 14th Amendment
 - Representatives ... apportion among the ... states ... according to their respective numbers
 - Districts must be as nearly **equal in population as practicable**
 - Deviation and overall range: close to zero as “practicable”

LEGAL ISSUES

Population Equality -- One Person, One Vote

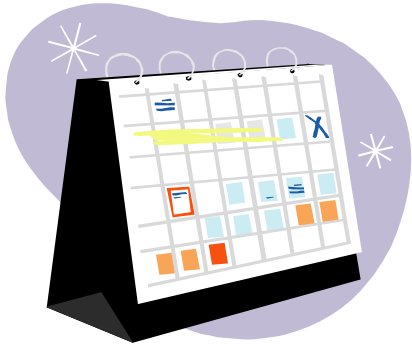
State Legislative Jurisdictions

- 14TH Amendment--Equal Protection Clause
 - Districts substantially equal in population
 - A maximum overall deviation range of $\pm 5\%$

LEGAL ISSUES

Louisiana Constitution

- LOUISIANA LEGISLATURE
 - Article III, Section 1: Single Member Districts
 - Article III, Section 3: no more than 39 Senators; 105 Representatives
 - Article III, Section 6:
 - Legislature must be redistricted by Dec. 31, 2011 or any elector can petition the Supreme Court to do it
 - Must use Census Population Data



Proposed Timeline For Redistricting

- **April 1, 2010:** Census Day
- **December 2010:** President of the U.S. notified of the population of each state
- **January 2011:** State Informed About Number of Congressional Seats allocated to Louisiana
- **February __, 2011:** Census Data is delivered to the Legislature
- **February __, 2011:** Committee hearing on Census data
- **February __-March __, 2011:** Public Hearings around the state

Timeline For Redistricting (Cont.)

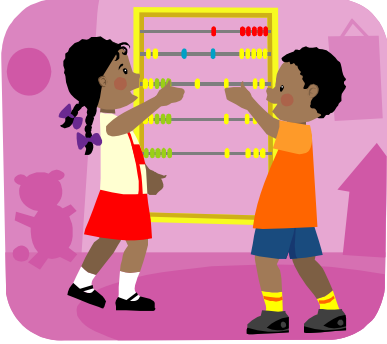
- **April __ – __, 2011:** Proposed Extraordinary Session to establish new Legislative, Congressional, Supreme Court, Public Service Commission, and BESE districts
- **April 25 - June 23, 2011:** Regular Session
- **End of April-May 2, 2011:** Proposed deadline for Submission of Plans for preclearance
- **August 29, 2011:** Deadline for SOS to receive notice of preclearance of Legislative plans (R.S. 18:1942)
- **September 6 - 8, 2011:** Qualifying dates for Legislative & BESE elections
- **October 22, 2011:** Primary Election for members of the legislature and elected BESE members
- **November 19, 2011:** General Election





Timeline For Redistricting (Cont.)

- **December 31, 2011:** Article III, §6 deadline for the Legislature to redistrict itself
- **January 9, 2012:** Inauguration Day
- **June 27, 2012:** Deadline for Secretary of State to receive notice of preclearance of plans for Congress, Public Service Commission, Supreme Court, and other judgeships for inclusion on fall ballot (R.S. 18:1942)
- **July 5, 6, & 9, 2012:** Qualifying for regular elections
- **August 25, 2012:** First Party Primary for Congress
- **October 6, 2012:** Open Primary Election for Supreme Court and Public Service Commission (staggered terms) and Second Party Primary for Congress
- **November 6, 2012:** General Election



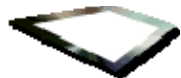
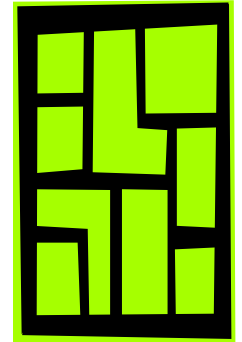
The 2010 Census

- **Primary Purpose:** A count of persons in each state as of April 1, 2010, for the apportionment of Representatives in Congress
- **Secondary Purpose: Redistricting**
 - Public Law 94-171 requires the Census Bureau to report population data by various geographic areas
- **Other Purposes:** Making public policy decisions and fund allocation

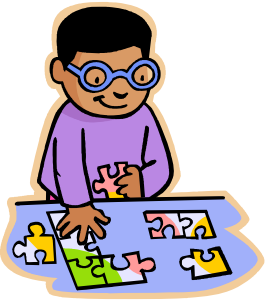


Census Population is reported by Geographic Area

- Parishes
- Legislative districts
- Municipalities & Census Designated Places
 - Census Tracts
 - Voting Districts (Precincts)
 - Census Block Groups
 - Census Blocks



Building Blocks For Legislatively Drawn Plans



- The Legislature uses precincts as the building blocks for redistricting plans
- Parish Governing Authorities are required to use census block boundaries as the boundaries for precincts

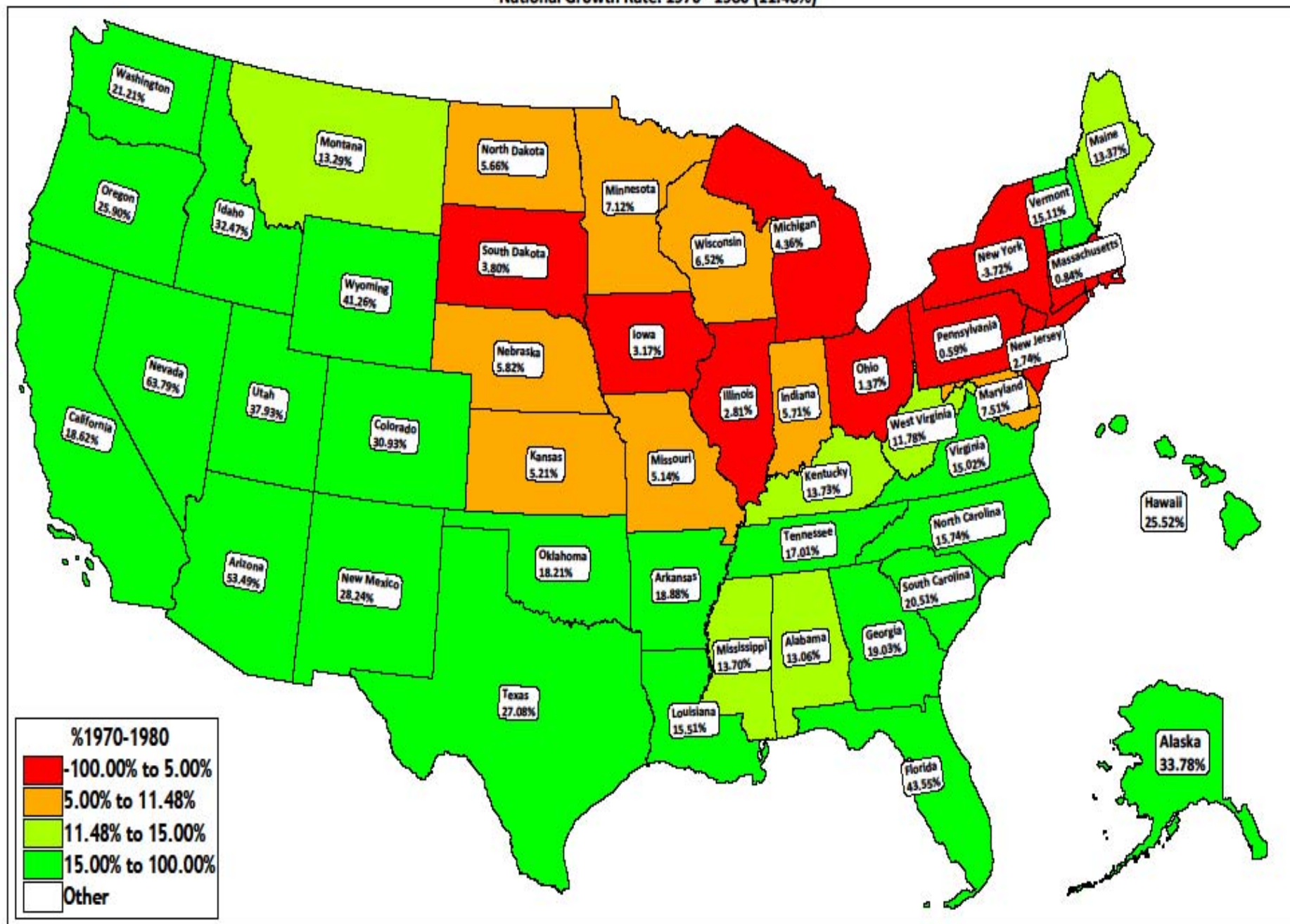


P.L. 94-171 Data Includes the Following Tabulations By Precinct

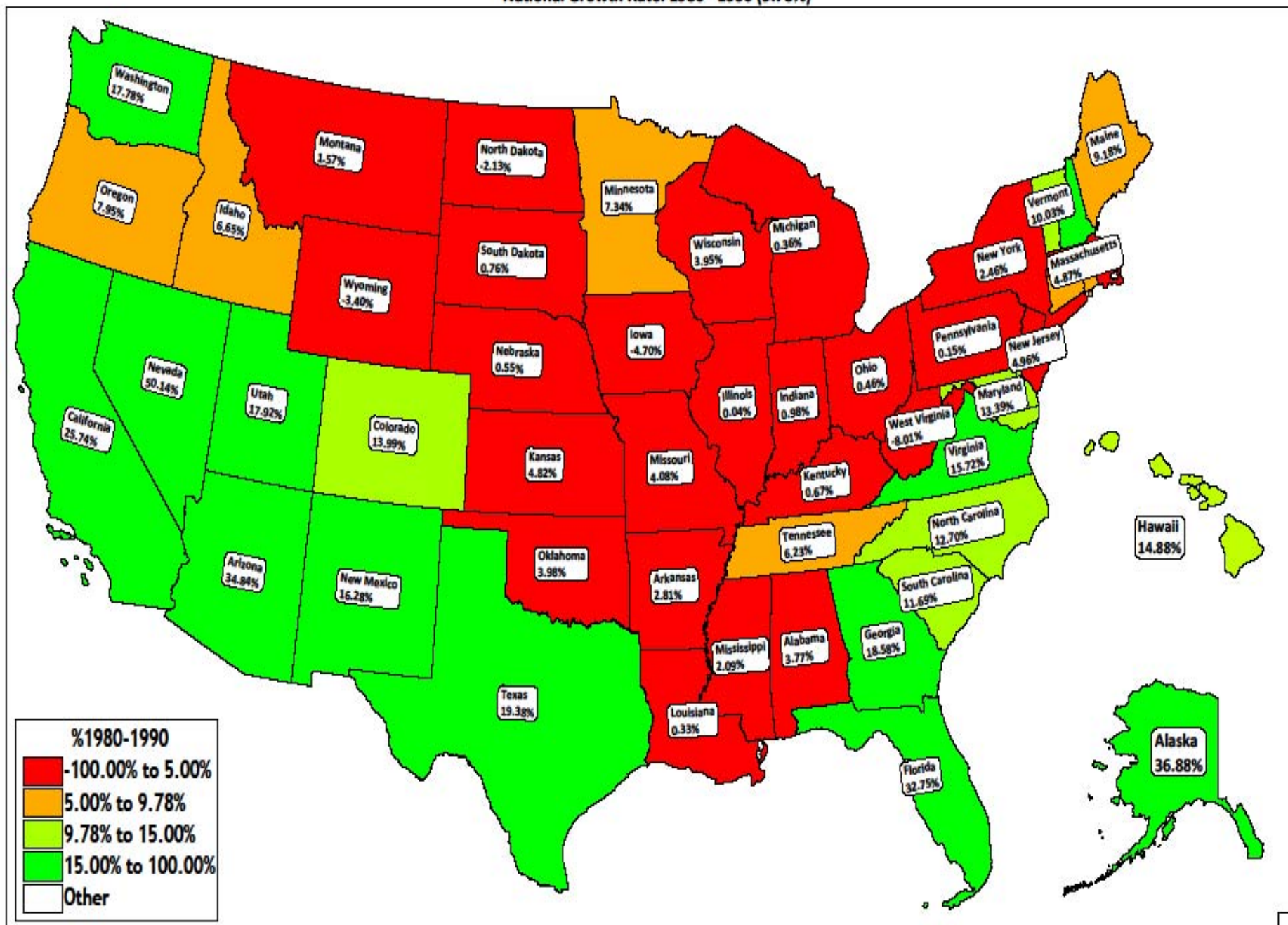


- **Total Population**
- **Voting Age Population (over 18)**
- **Racial Data**

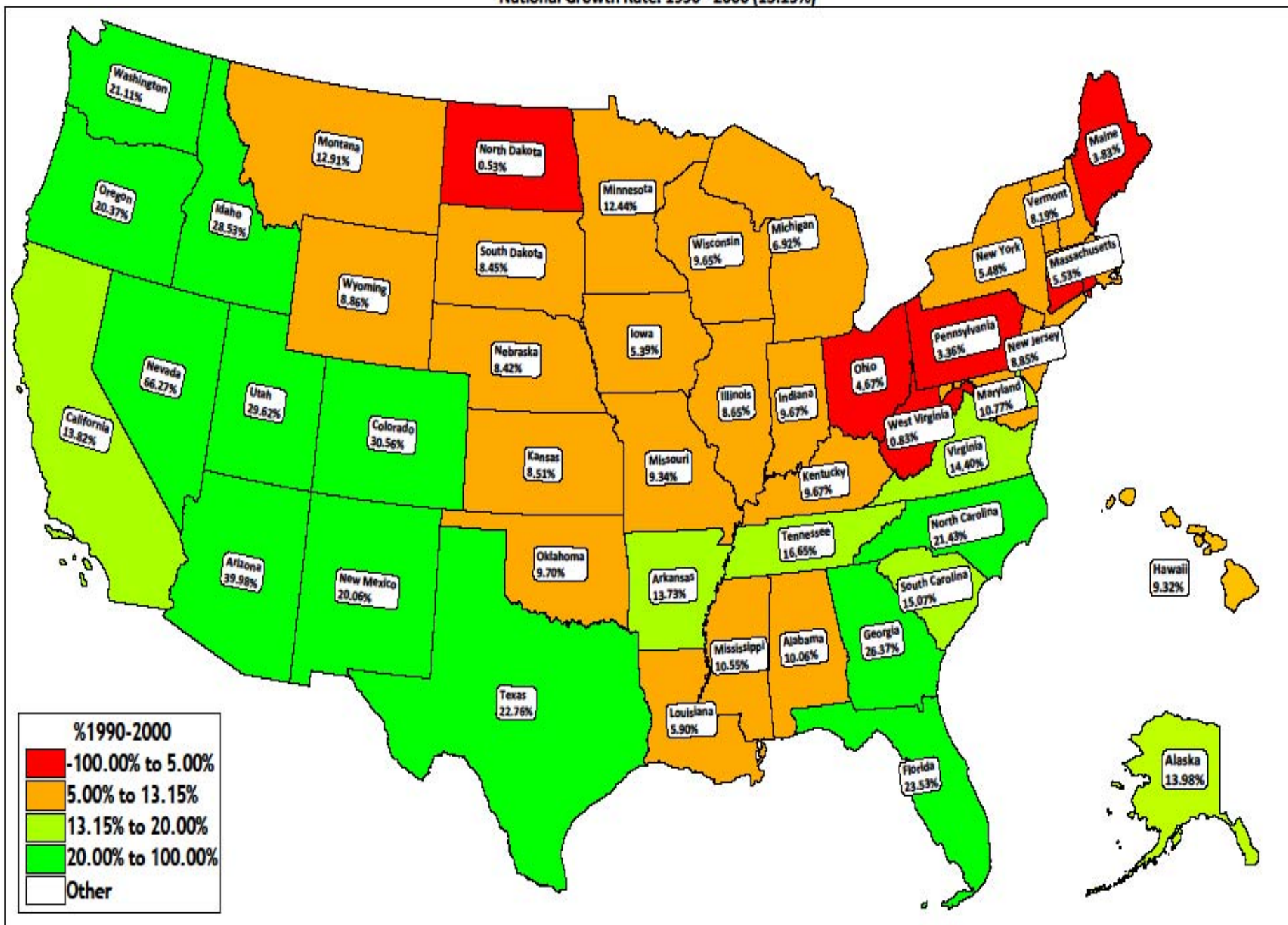
National Growth Rate: 1970 - 1980 (11.48%)



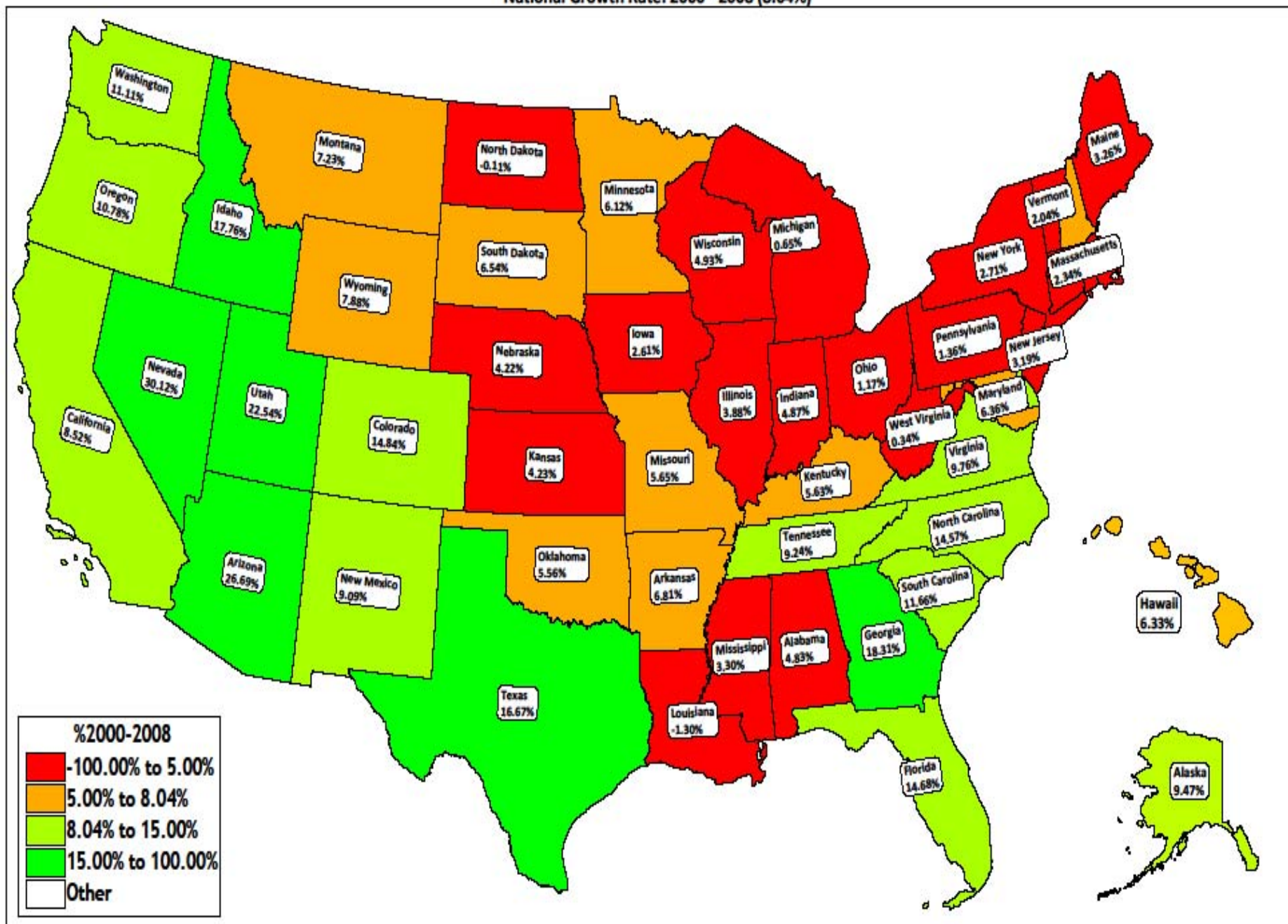
National Growth Rate: 1980 - 1990 (9.78%)



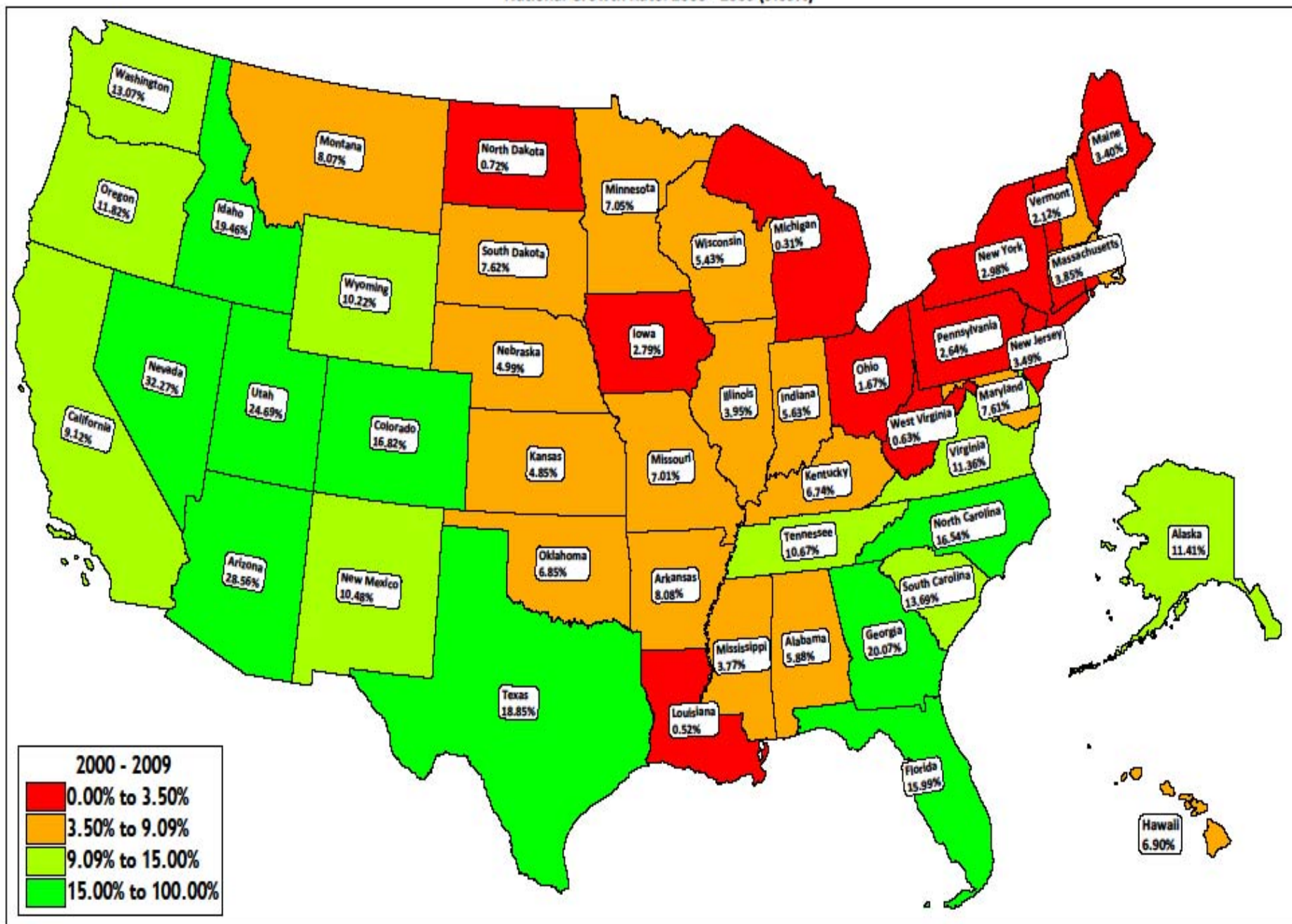
National Growth Rate: 1990 - 2000 (13.15%)



National Growth Rate: 2000 - 2008 (8.04%)



National Growth Rate: 2000 - 2009 (9.09%)



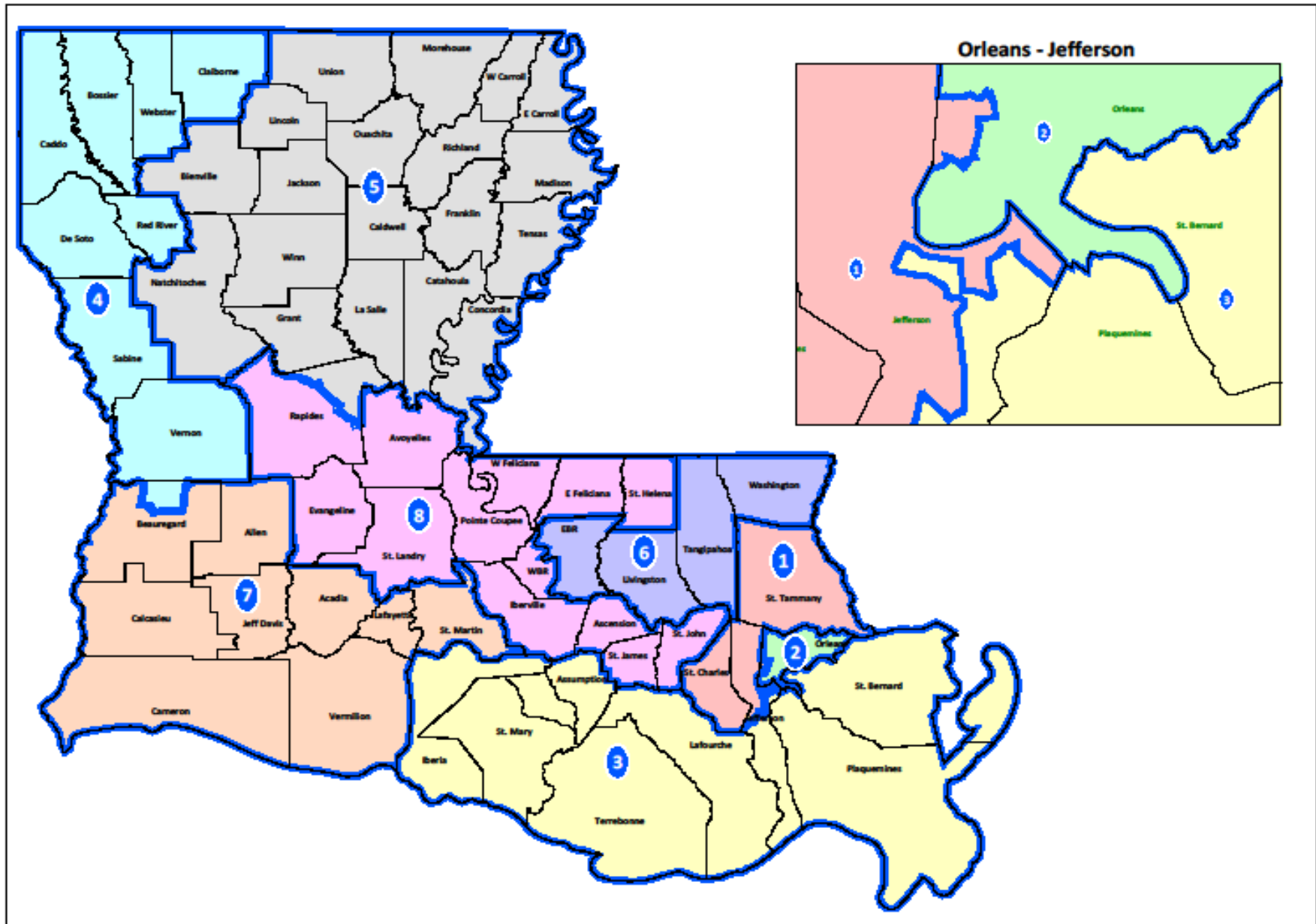
Congress

Ideal Population Thru the Decades*

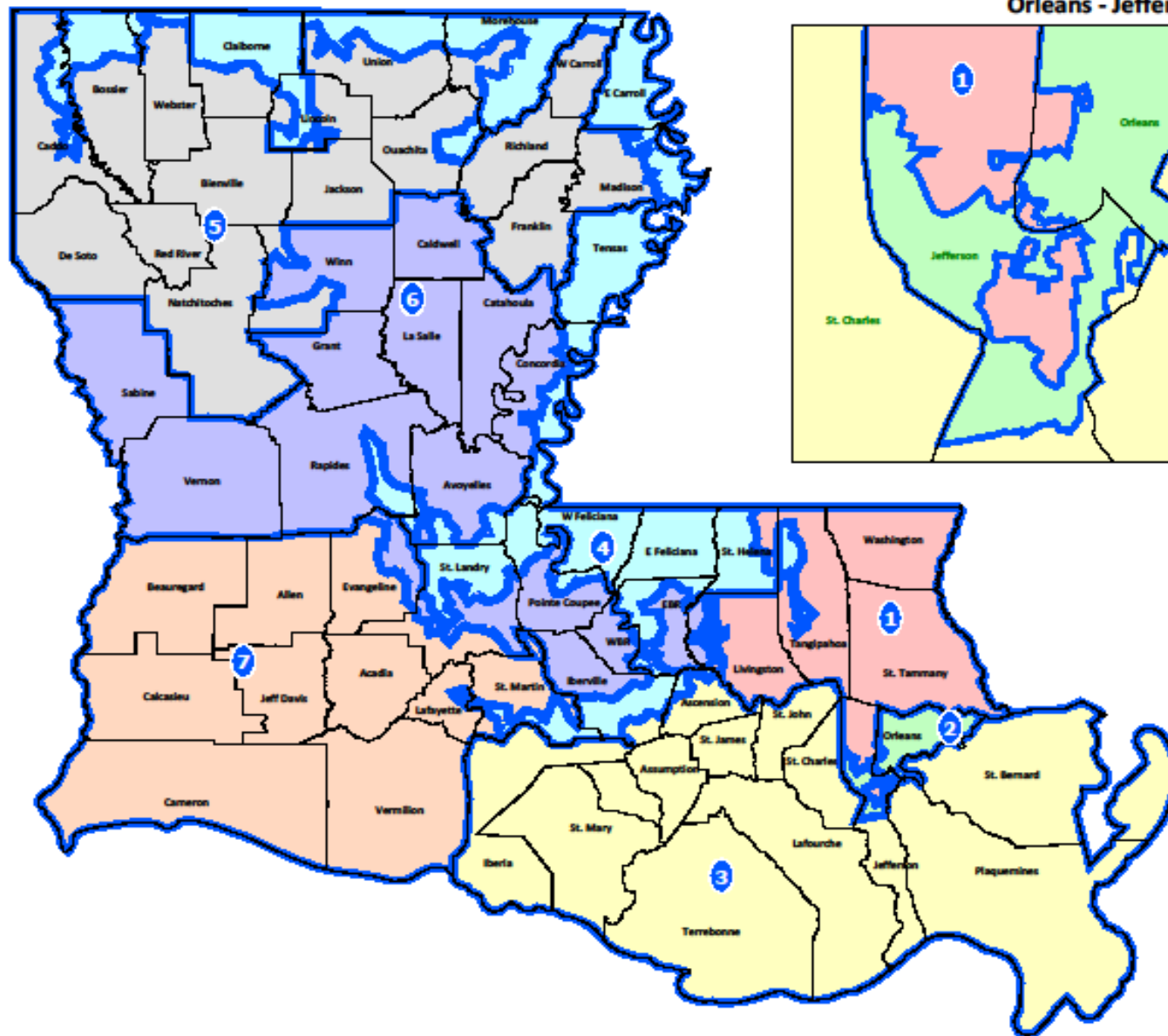
*The 2009 figure is based upon the 2009 Census Estimate and the 2010 figure is based upon the Census Projection

Decade	Districts	Ideal Population
1980	8	525,738
1990	7	602,853
2000	7	638,425
2009*	7	641,725
2009*	6	748,679
2010*	7	667,526
2010*	6	778,780

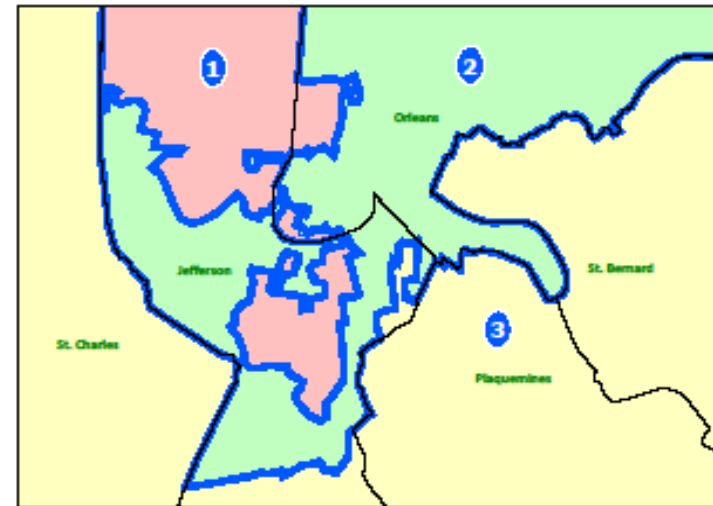
Congress - 1980



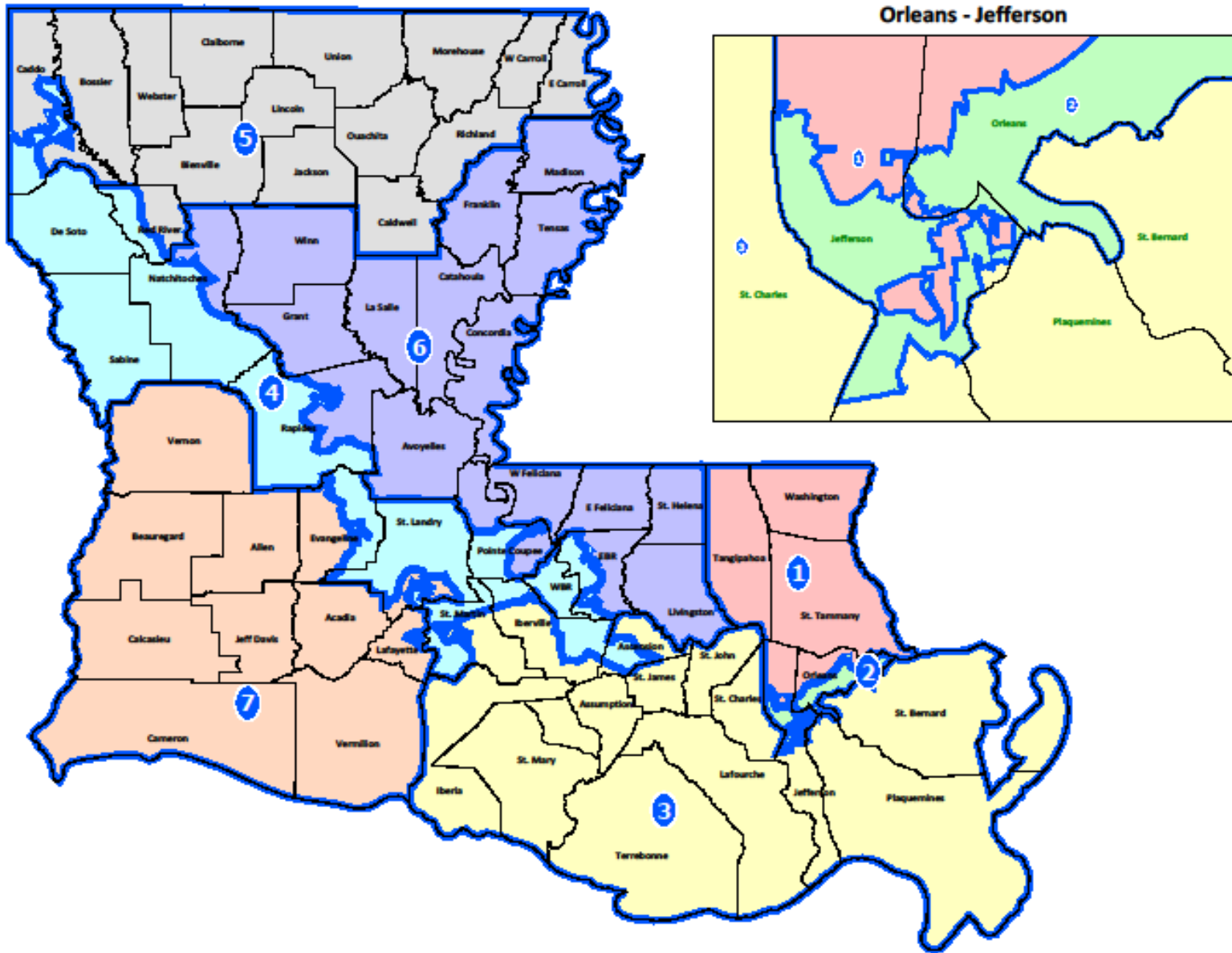
Congress - 1992



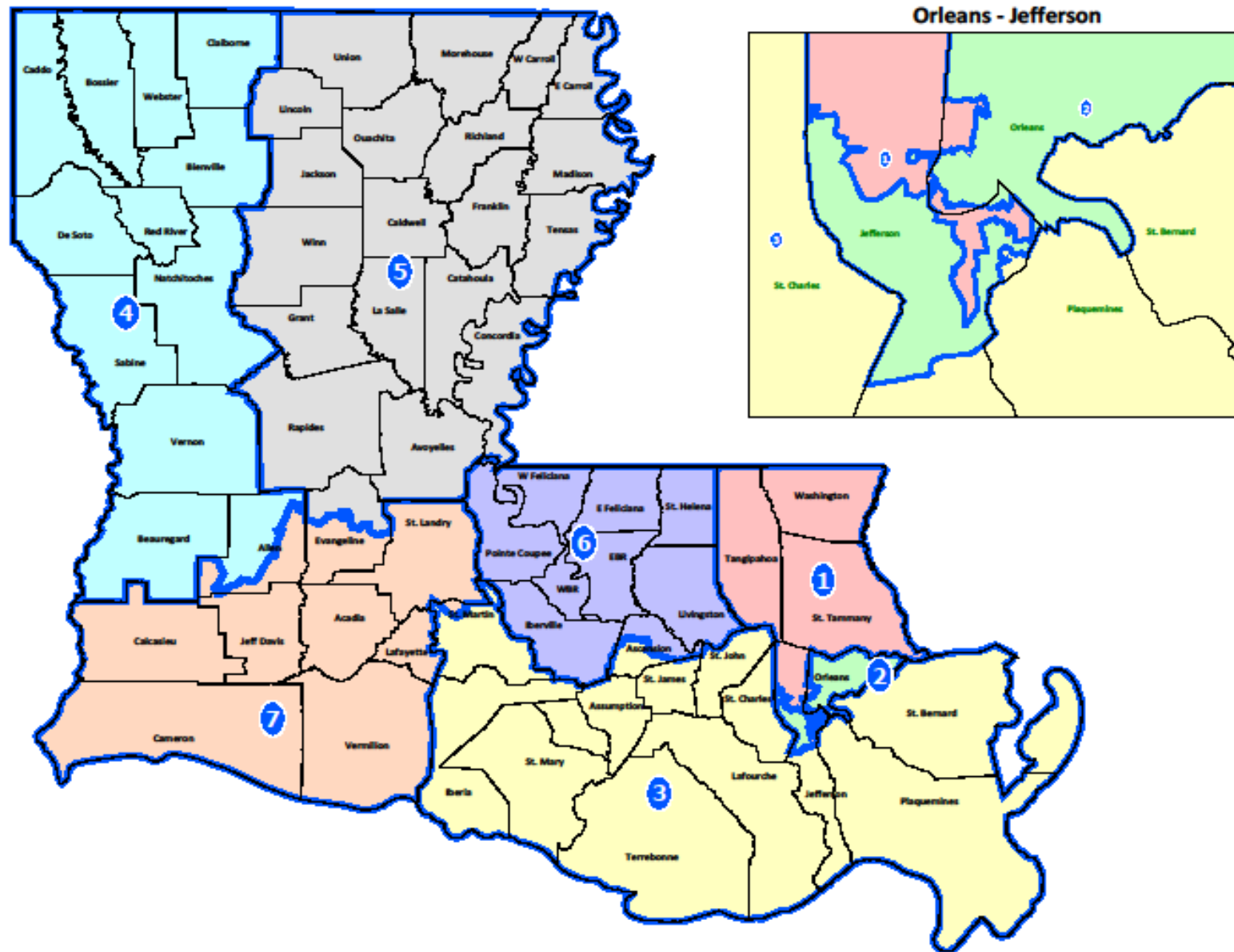
Orleans - Jefferson



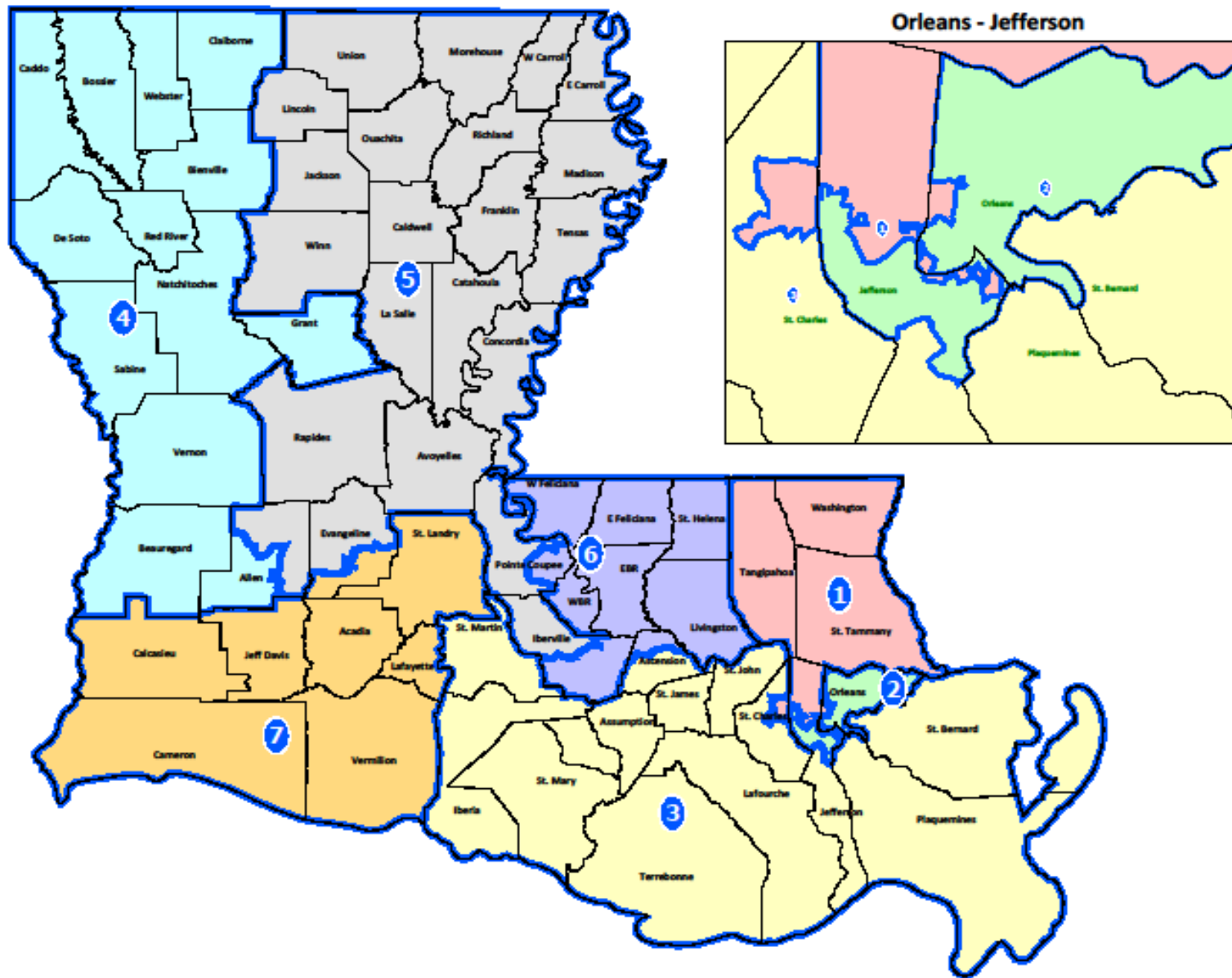
Congress - 1994



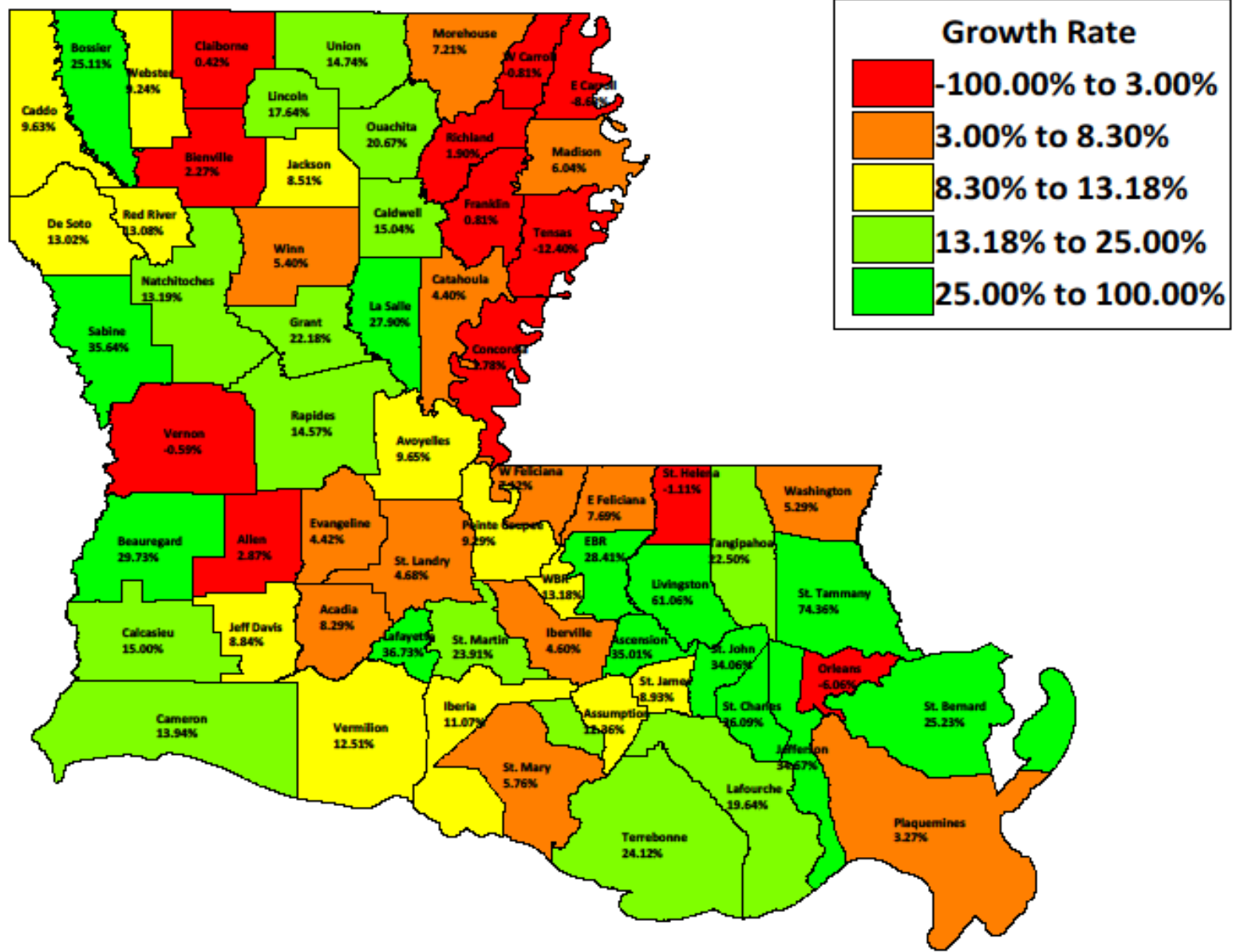
Congress - 1996



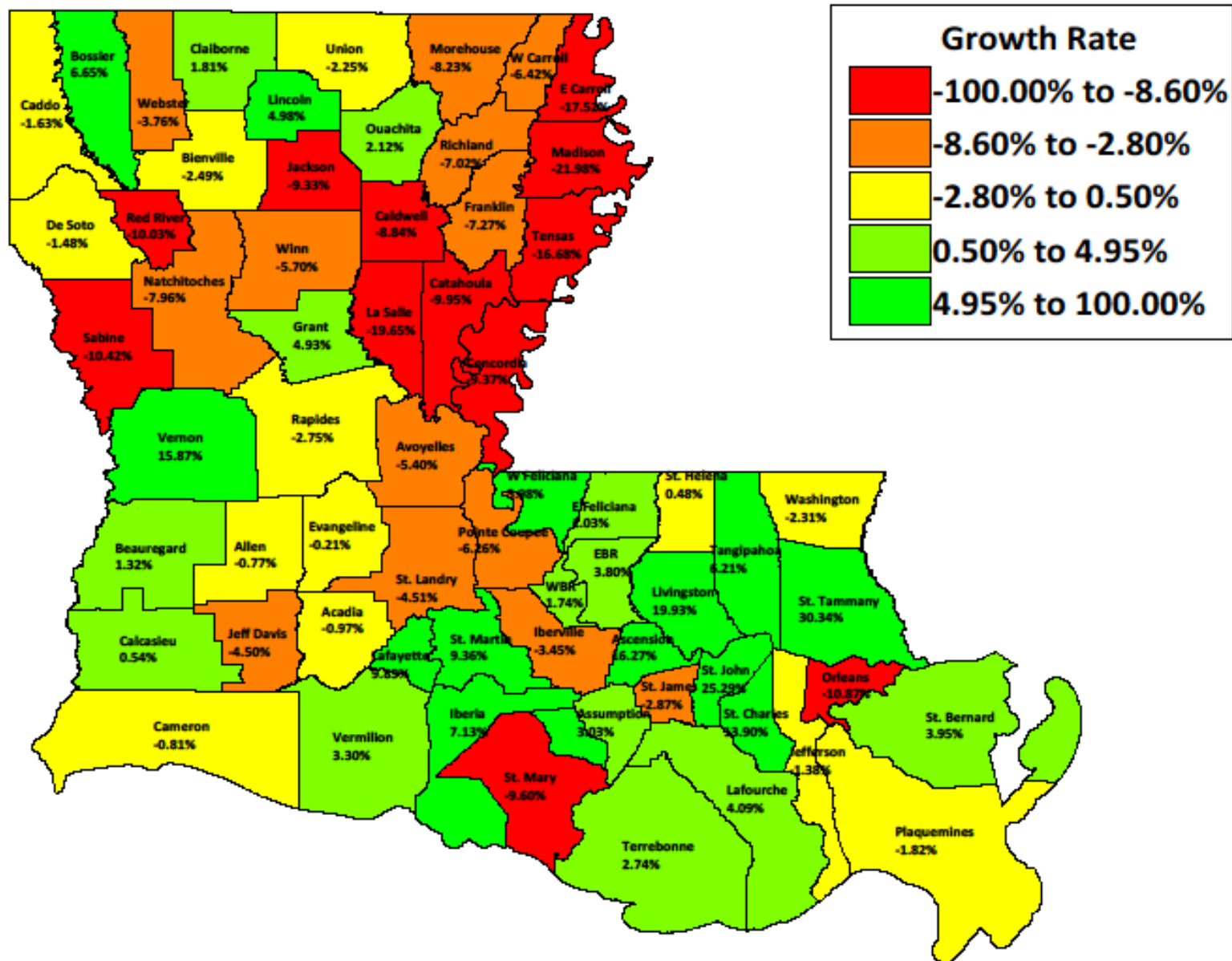
Congress - 2001



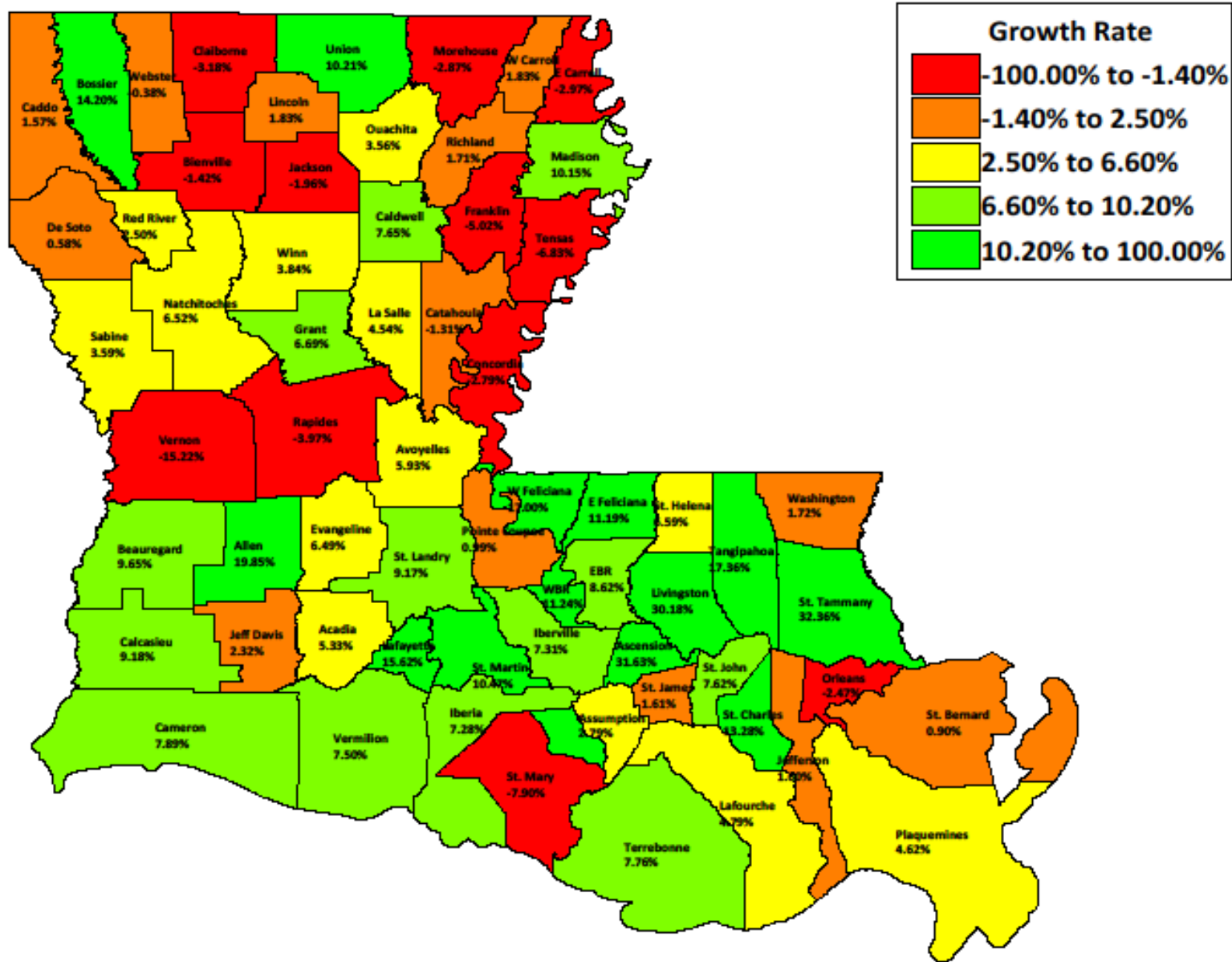
Parish - 1970 To 1980 Census Population Change



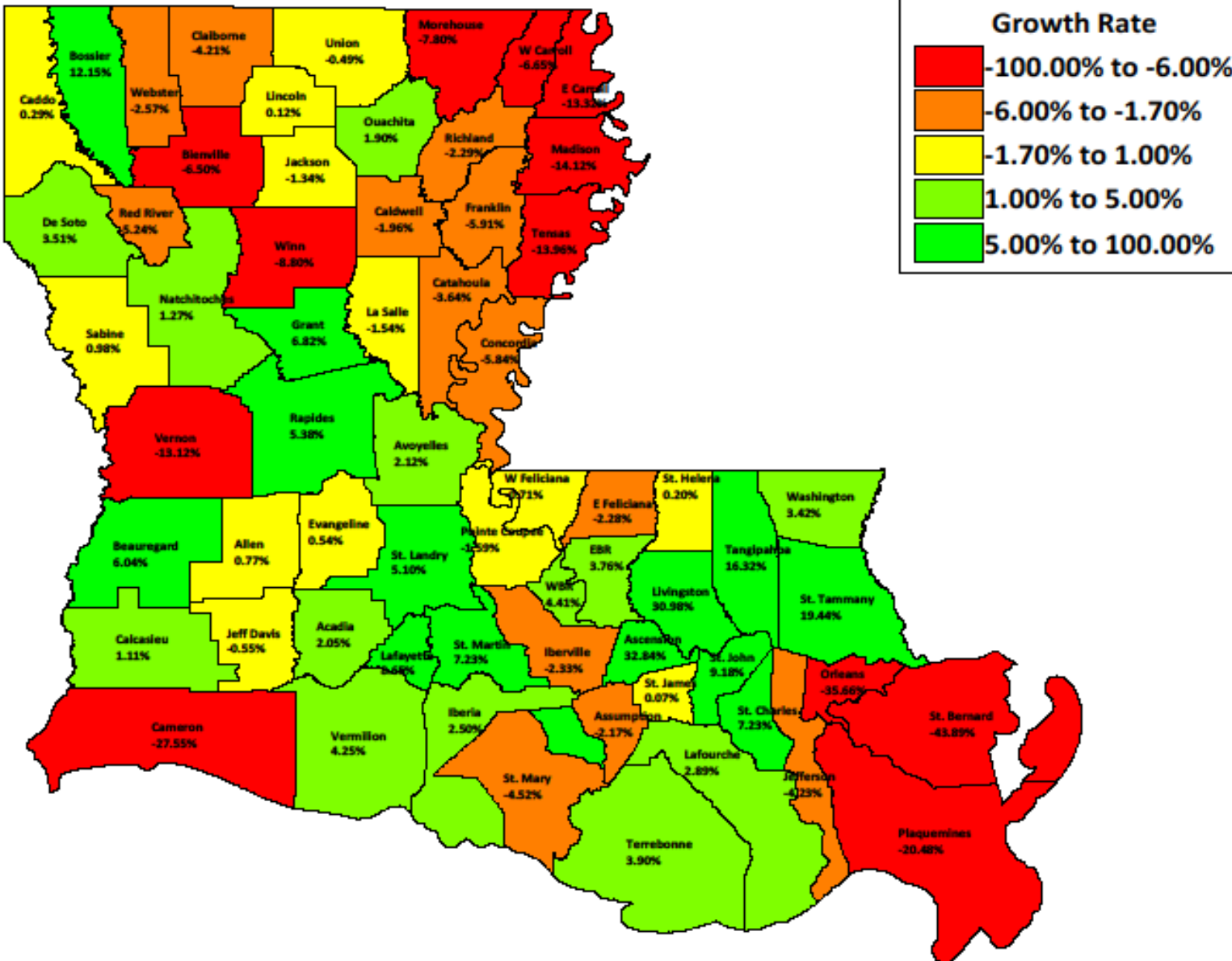
Parish - 1980 To 1990 Census Population Change



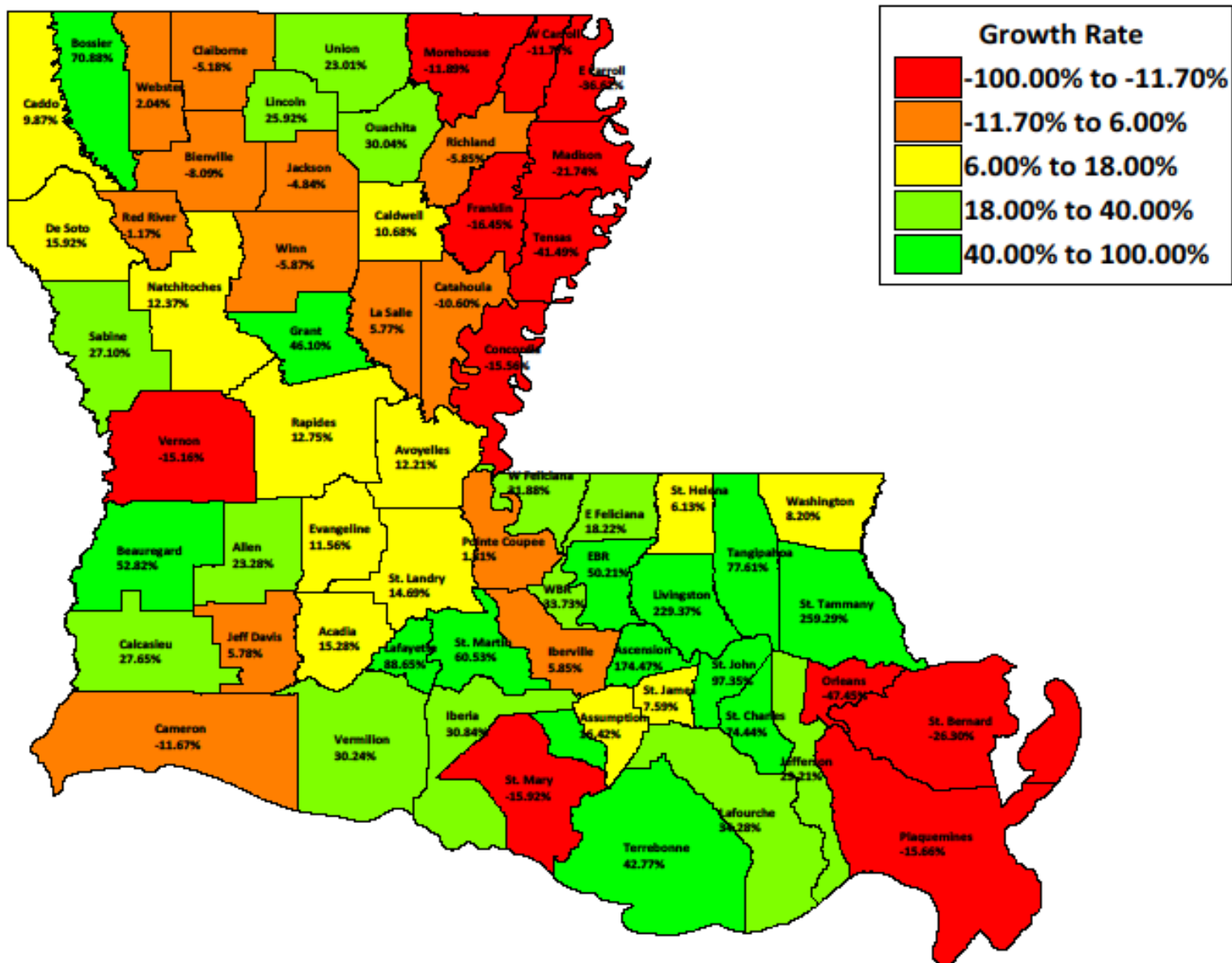
Parish - 1990 To 2000 Census Population Change



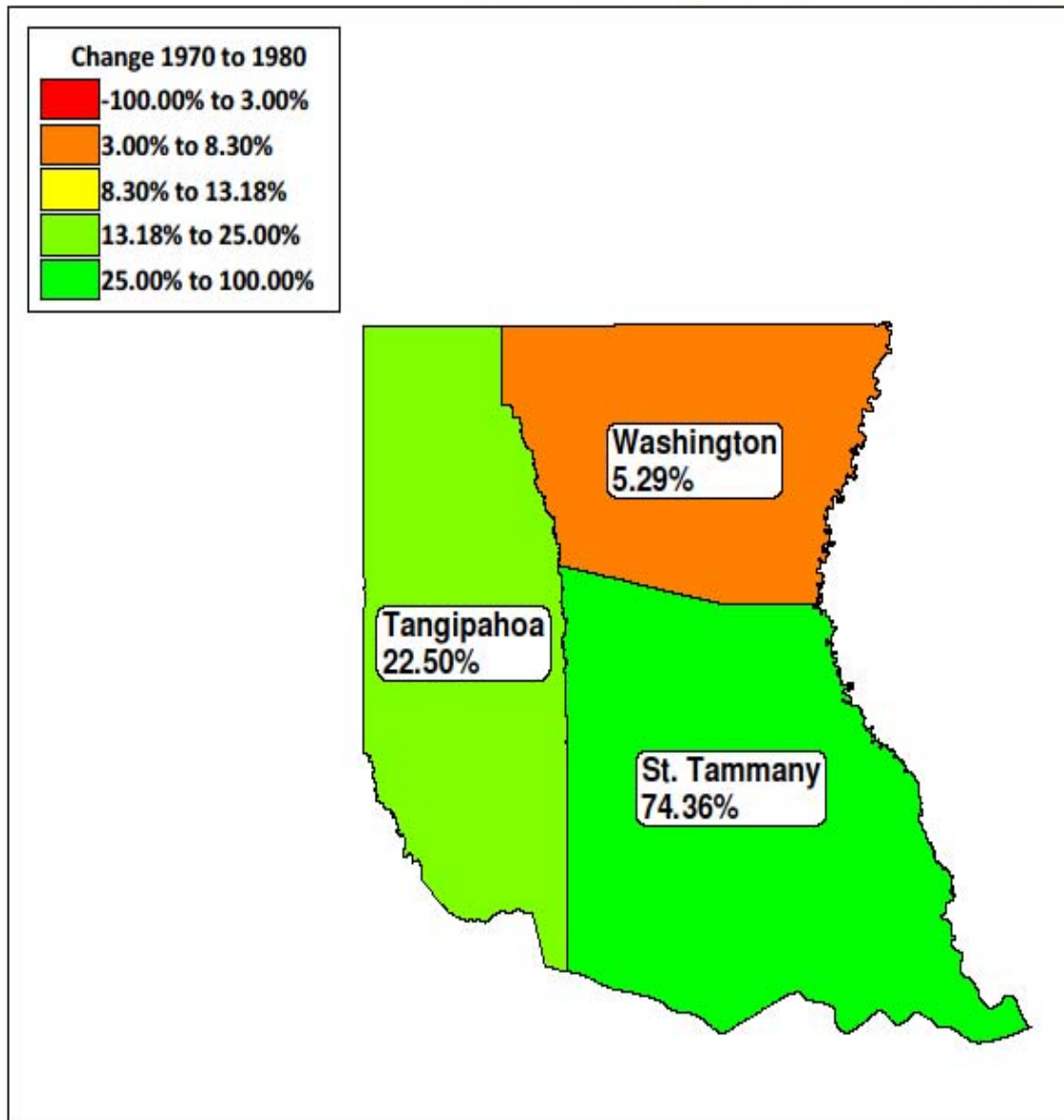
Parish - 2000 Census To 2008 Census Estimate Population Change



Parish - 1970 Census To 2008 Census Estimate Population Change

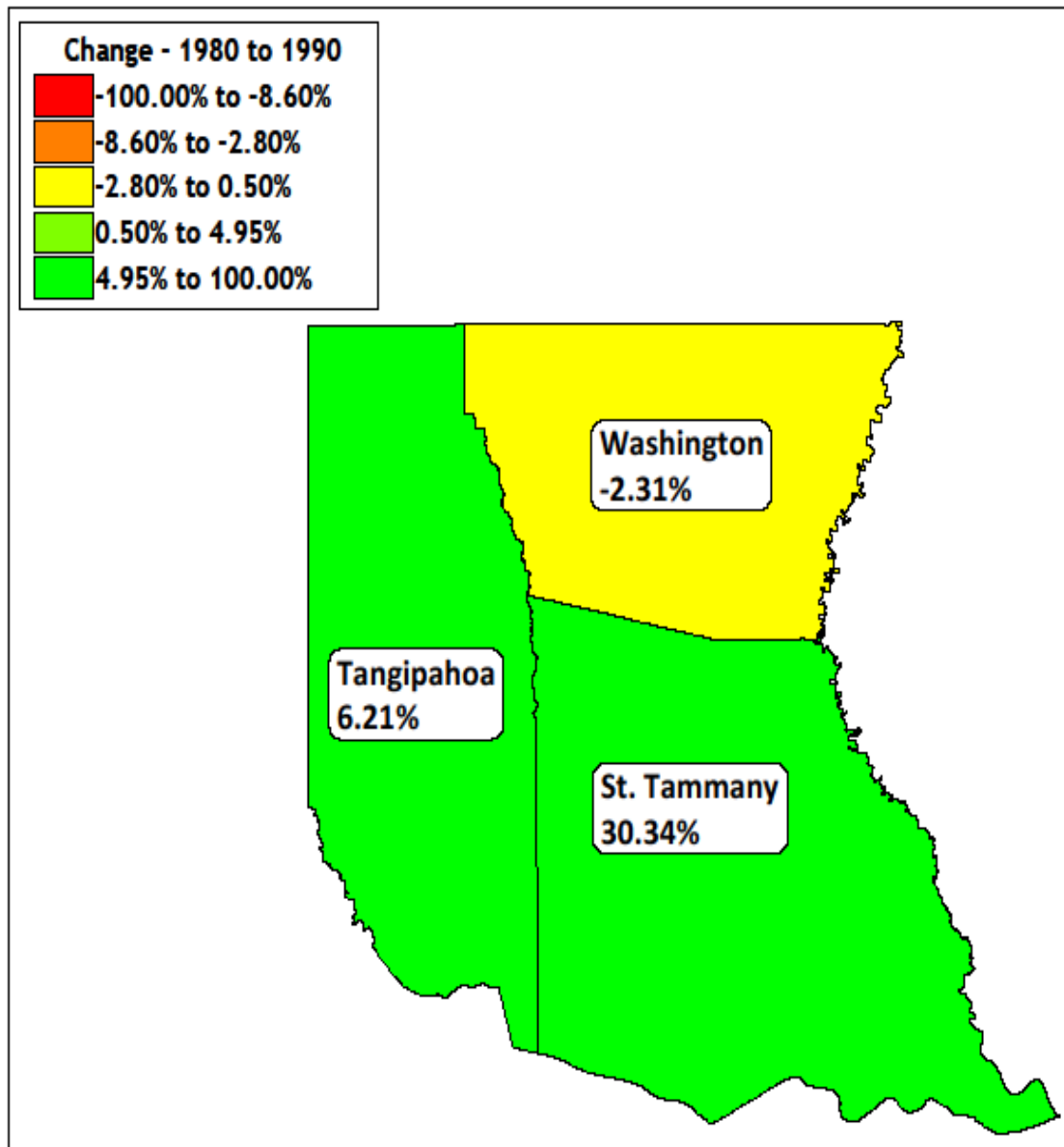


Northshore Region - 1970 To 1980 Census Population Change



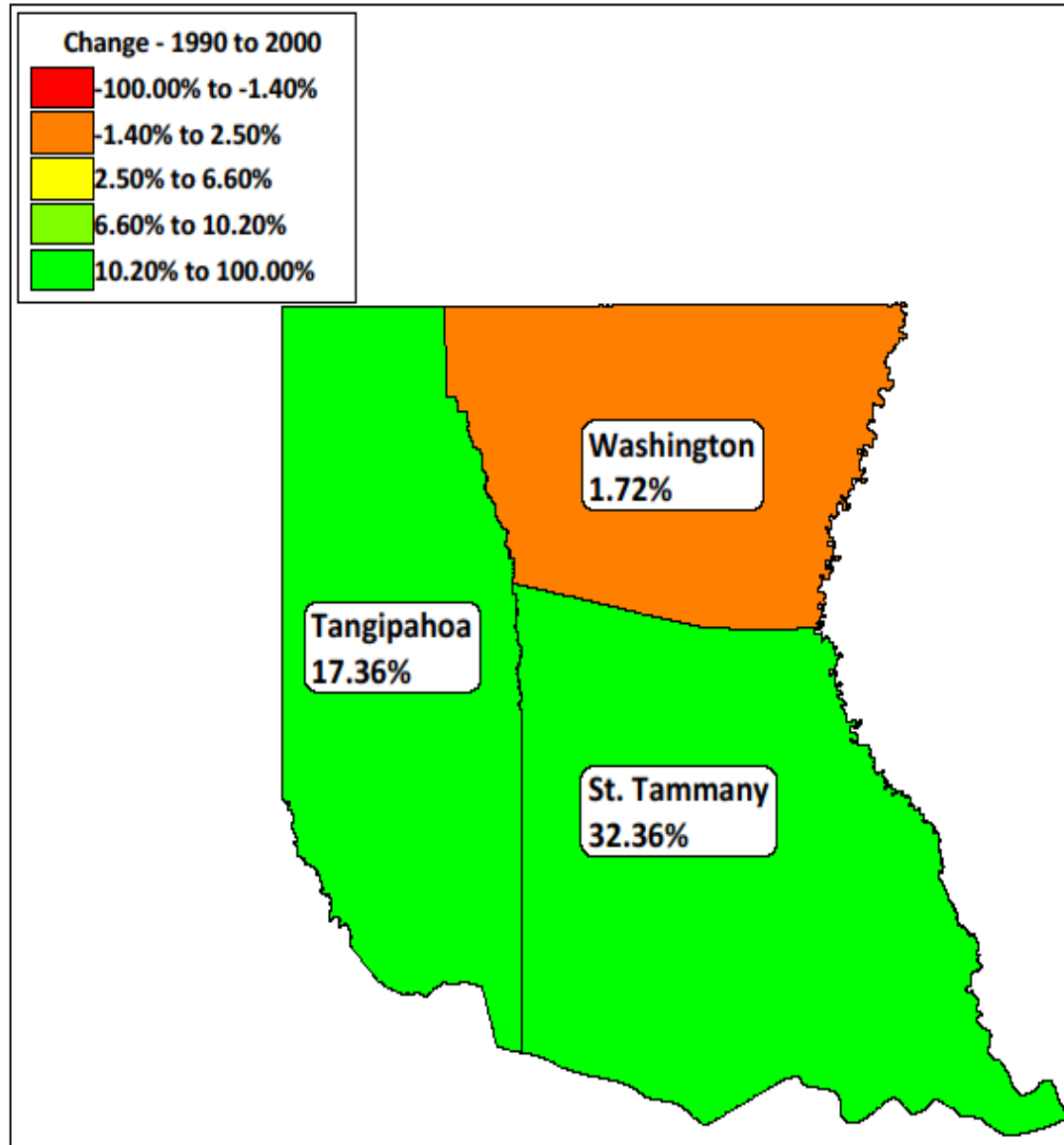
Parish	Population	Change
St. Tammany	110,869	47,284
Tangipahoa	80,698	14,823
Washington	44,207	2,220

Northshore - 1980 To 1990 Census Population Change



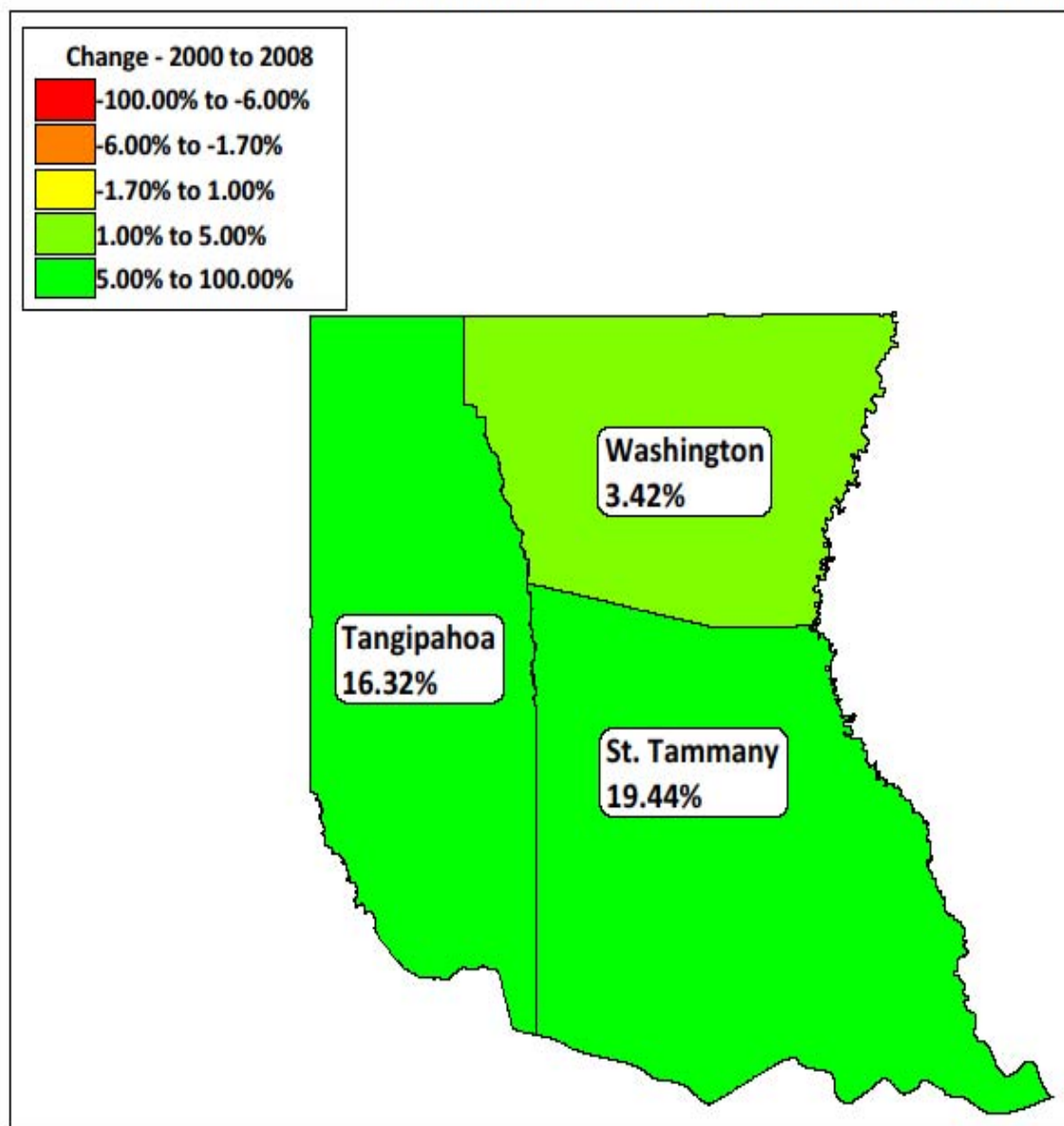
Parish	Population	Change
St. Tammany	144,508	33,639
Tangipahoa	85,709	5,011
Washington	43,185	-1,022

Northshore - 1990 To 2000 Census Population Change



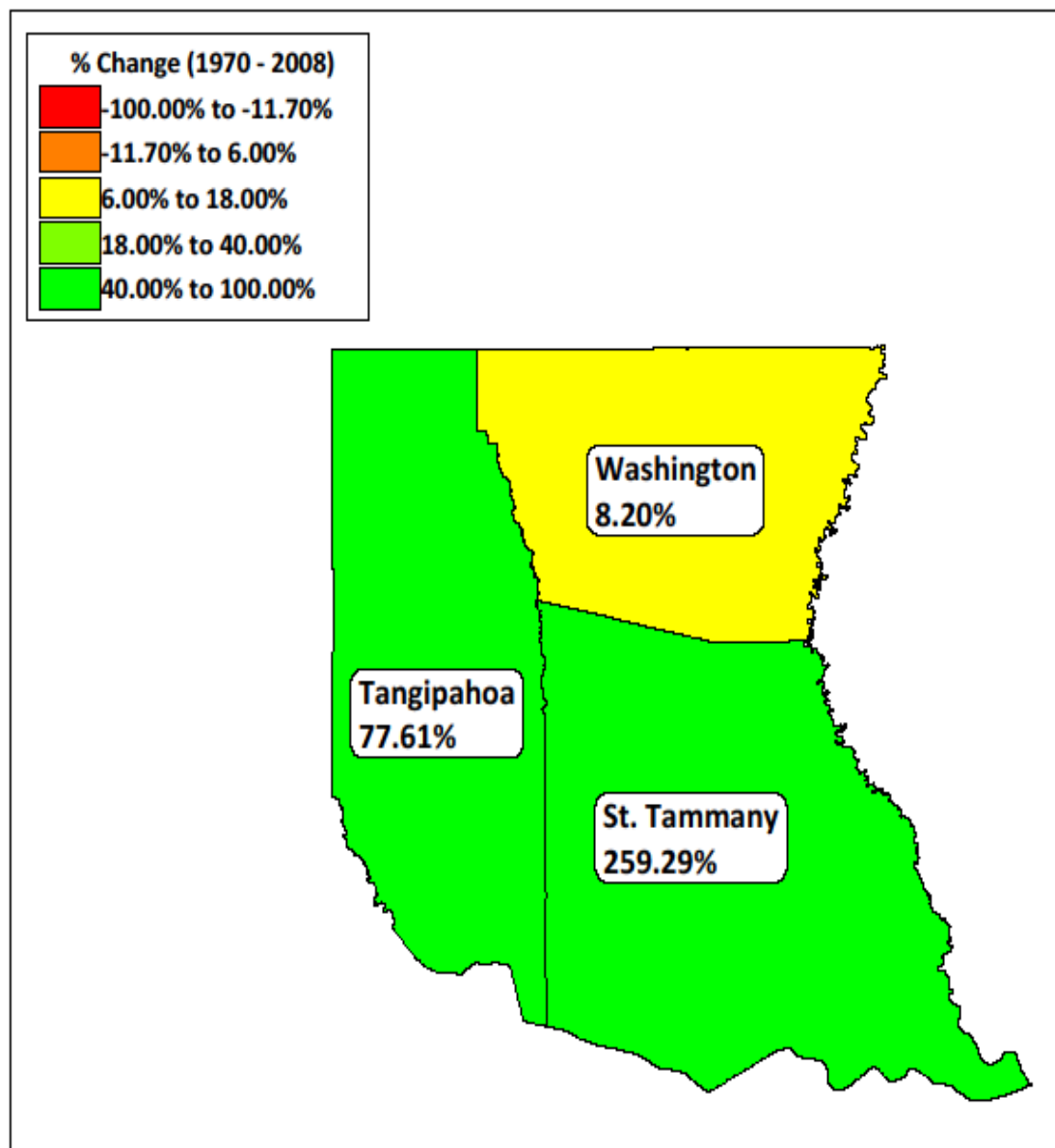
Parish	Population	Change
St. Tammany	191,268	46,760
Tangipahoa	100,588	14,879
Washington	43,926	741

Northshore - 2000 Census To 2008 Census Estimate Population Change



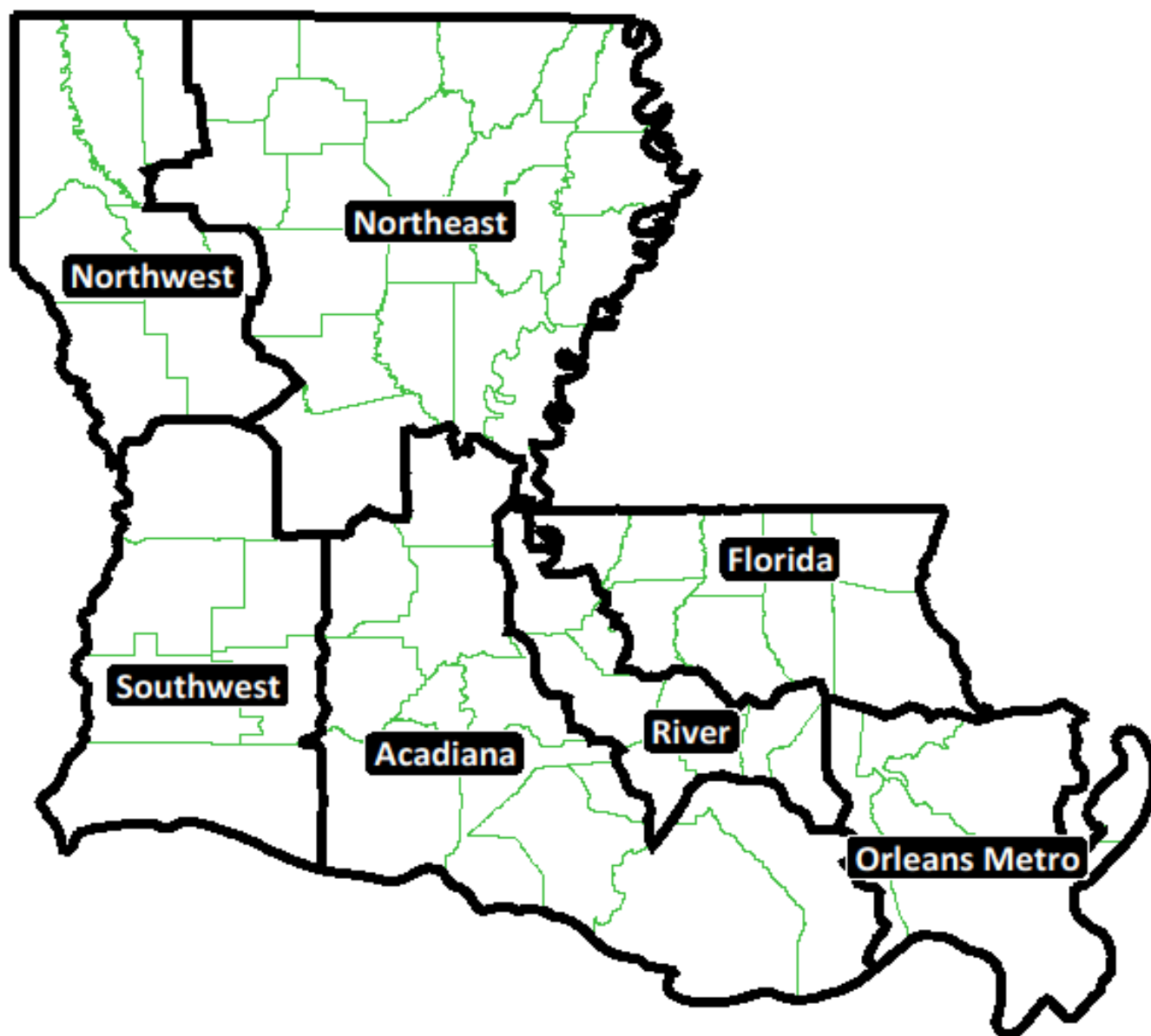
Parish	Estimate	Change
St. Tammany	228,456	37,188
Tangipahoa	117,001	16,413
Washington	45,430	1,504

Northshore - 1970 Census To 2008 Census Estimate Population Change



Parish	Change	% Change
St. Tammany	164,871	259.29%
Tangipahoa	51,126	77.61%
Washington	3,443	8.20%

Louisiana Regions



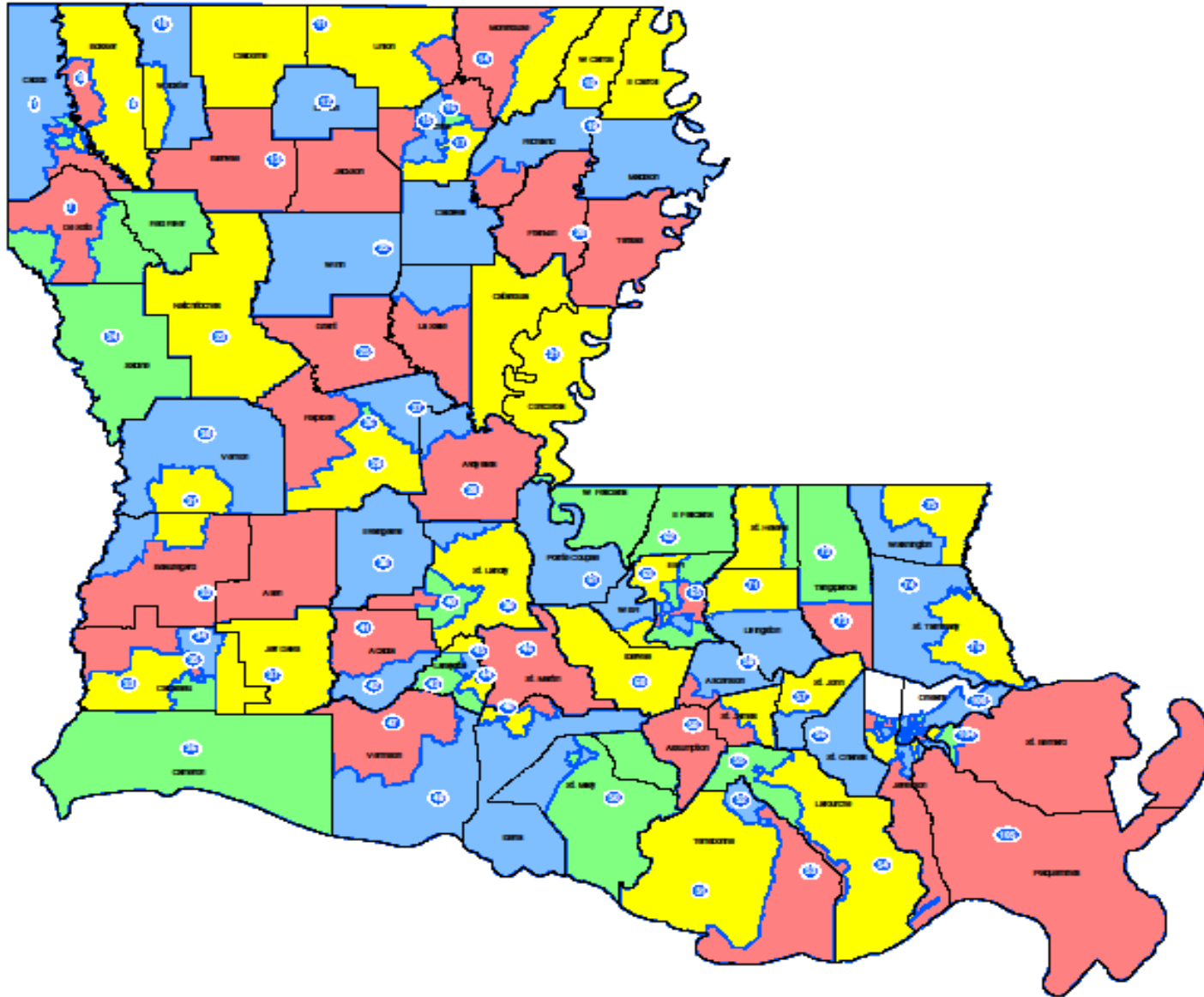
House District Ideal Population Thru the Decades*

*The 2009 figure is based upon the 2009 Census Estimate and the 2010 figure is based upon the Census Projection

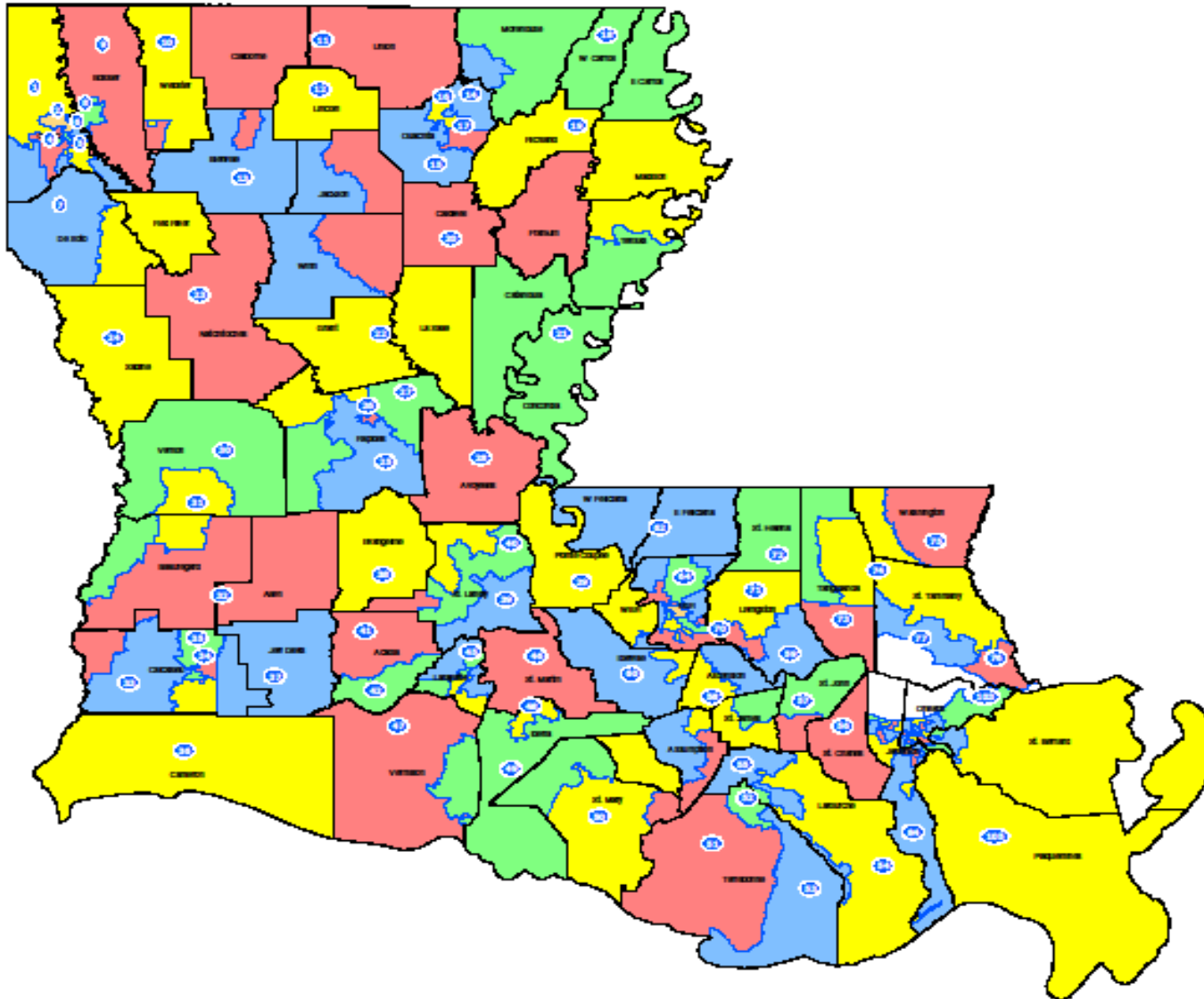


- 1970 Ideal: 34,697
- 1980 Ideal: 40,037
- 1990 Ideal: 40,190
- 2000 Ideal: 42,561
- 2009 Ideal: 42,781*
- 2010 Ideal: 43,930*

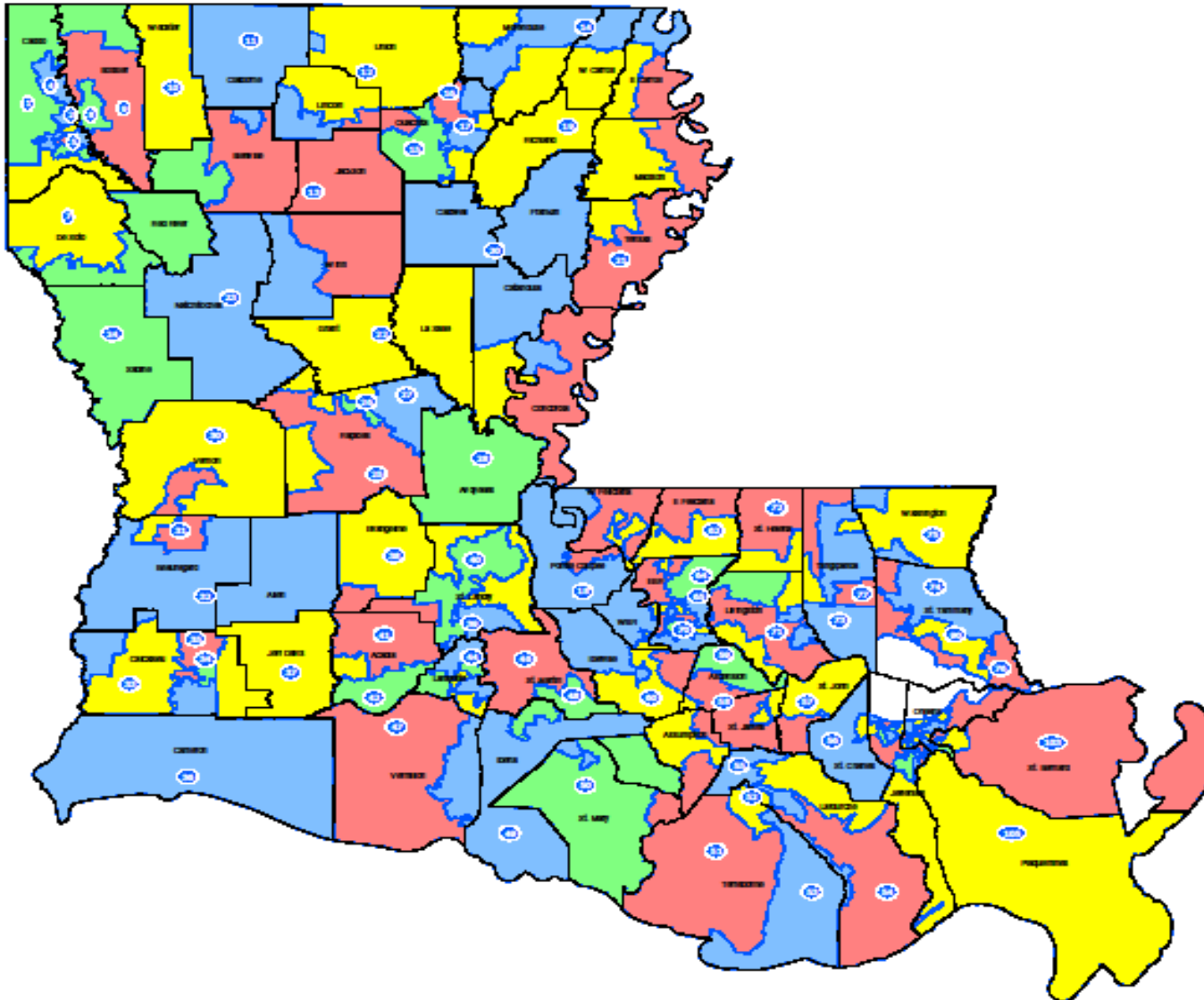
House 1970



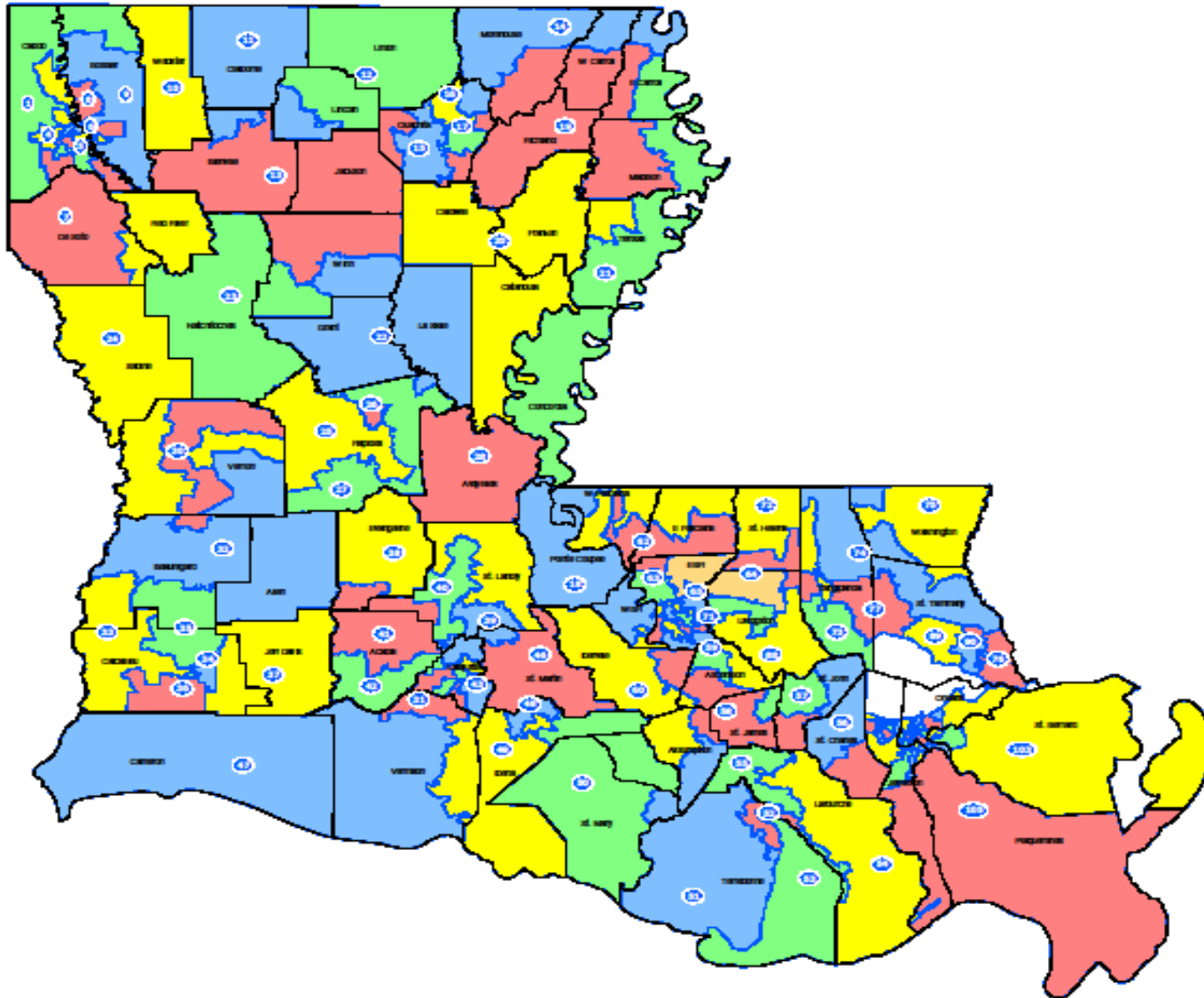
House 1980



House 1990



House 2000

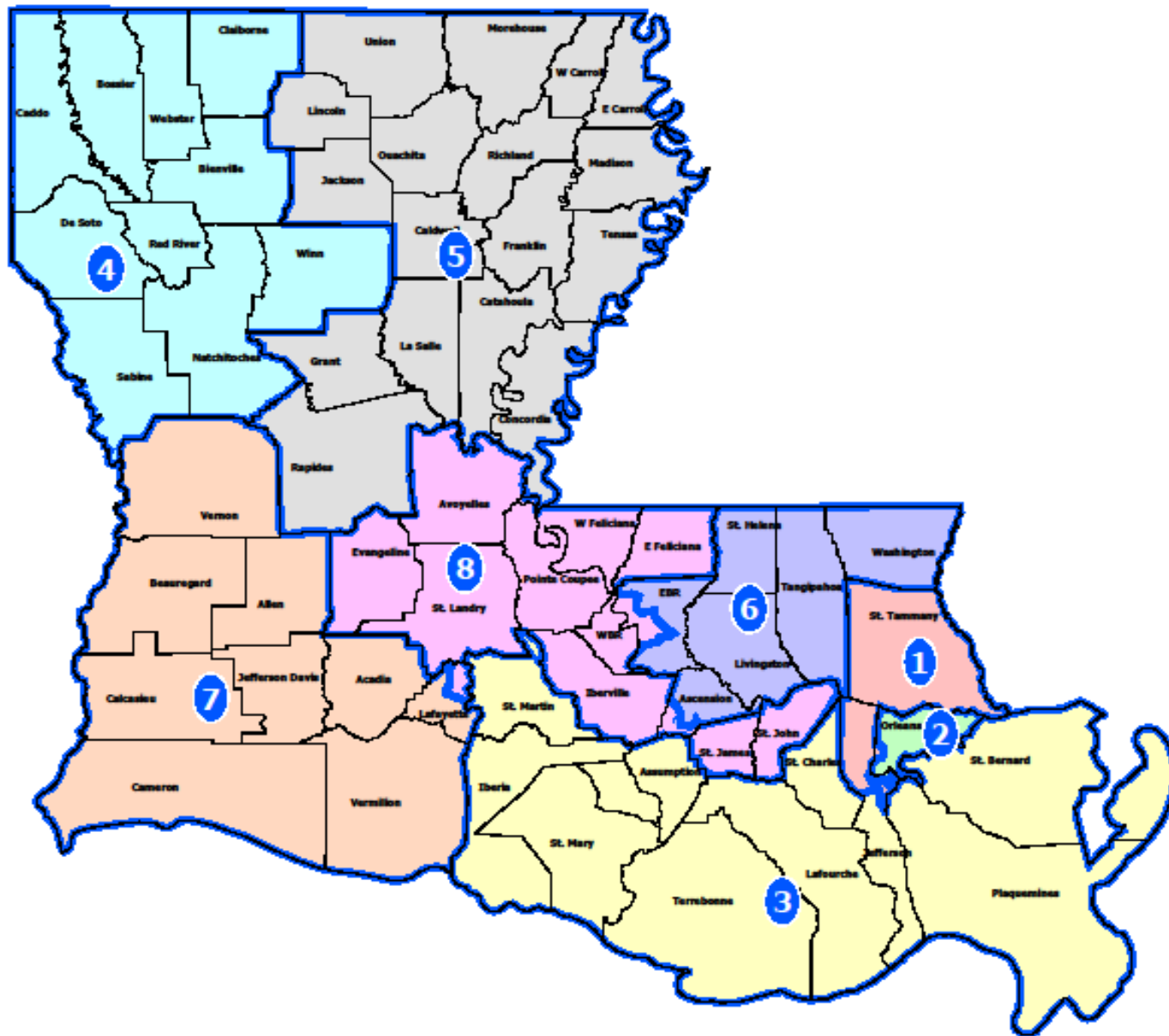


BESE Ideal District Population

*The 2009 figure is based upon the 2009 Census Estimate and the 2010 figure is based upon the Census Projection

- 1990 Ideal: 527,496
- 2000 Ideal: 558,622
- 2009 Ideal: 561,509*
- 2010 Ideal: 576,584*

BESE Districts



Supreme Court Ideal District Population

*The 2009 figure is based upon the 2009 Census Estimate and the 2010 figure is based upon the Census Projection

1990 Ideal: 602,853

2000 Ideal: 638,425**

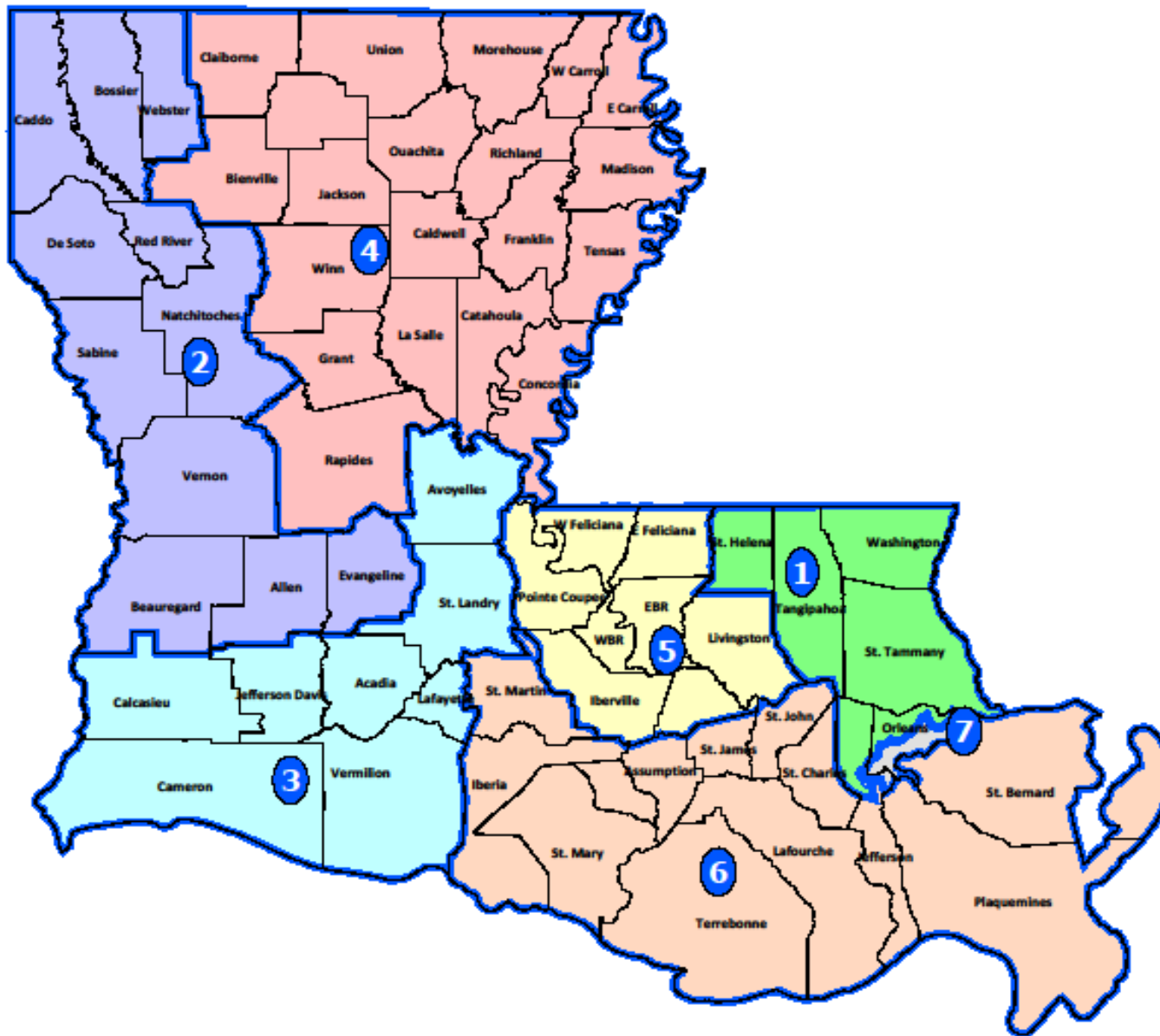
2009 Ideal: 641,725*

2010 Ideal: 658,954*



(**Note: Supreme Court Districts were not redrawn following the 2000 Census)

LA Supreme Court





Public Service Commission Ideal District Population

*The 2009 figure is based upon the 2009 Census Estimate and the 2010 figure is based upon the Census Projection

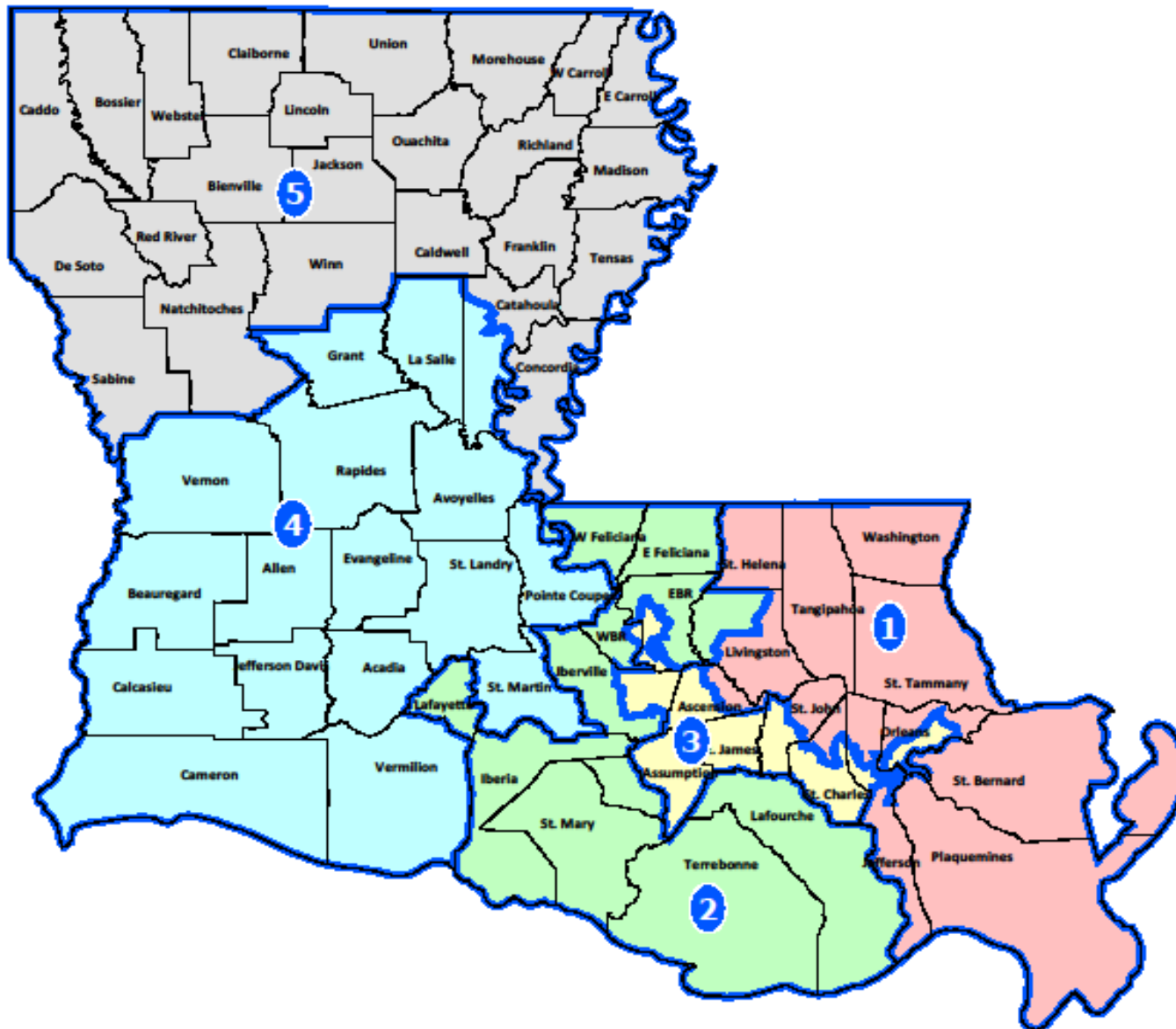
1990 Ideal: 843,994

2000 Ideal: 893,795

2009 Ideal: 898,415*

2010 Ideal: 922,535*

PSC Districts



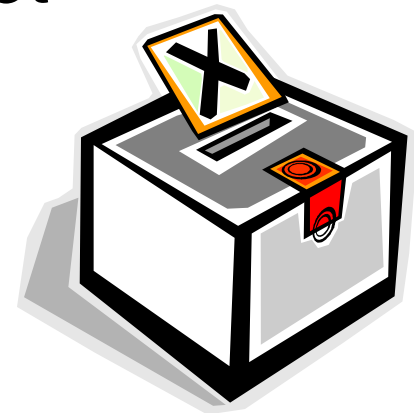
Discrimination Against Minorities

- Section 5 of the Voting Rights Act
 - In covered jurisdictions, plans must be precleared
 - Louisiana IS a covered jurisdiction
 - As are ALL of its subdivisions
 - Do not allow Retrogression
 - “Any discriminatory purpose”
 - No discriminatory effect
 - No requirement to maximize minority representation



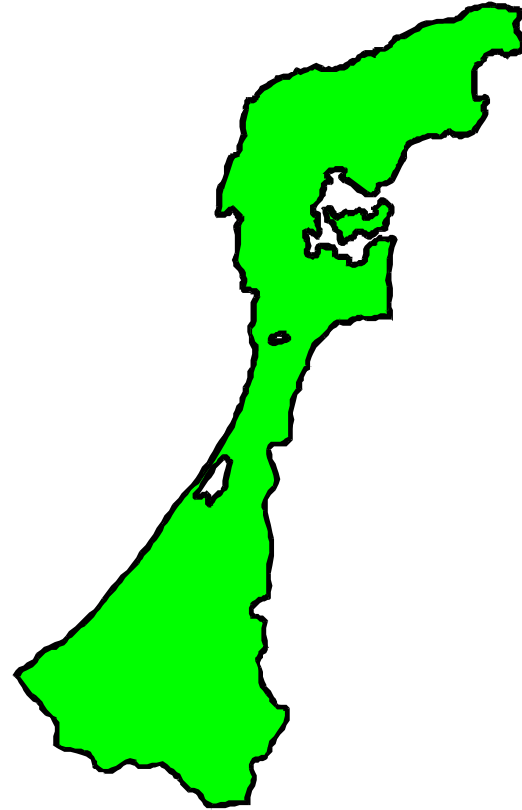
Discrimination Against Minorities

- Section 2 of the Voting Rights Act
 - National standard
 - No discriminatory effect
 - Gingles preconditions
 - Totality of the circumstances
 - Districts in which a minority has a fair chance to win

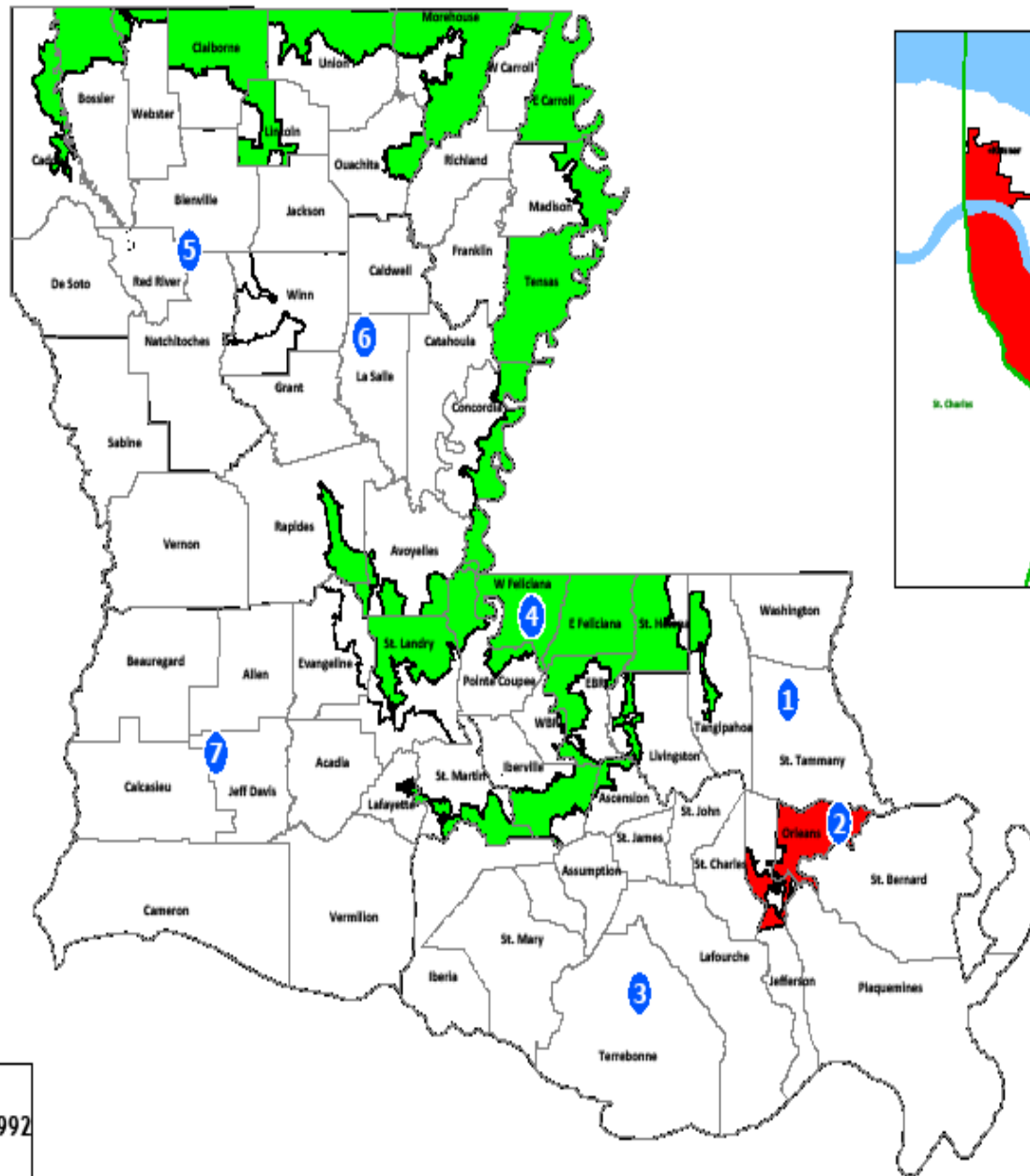


Racial Gerrymandering

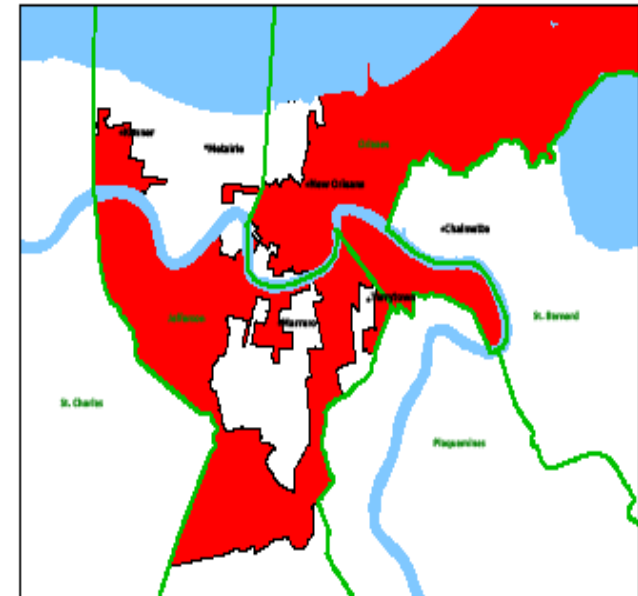
- What is racial gerrymandering?
- Equal Protection Clause
- What was the rationale in drawing district lines?



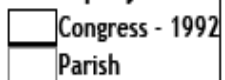
Congress - 1992



Orleans - Jefferson



Map layers



Racial Gerrymandering (cont.)

- Race-conscious redistricting is not *per se* unconstitutional
- Consideration of race-neutral districting principles
 - Compactness, contiguity, communities of interest, respect for political subdivisions, protection of core districts

Racial Gerrymandering (cont.)

- If race is found to be the “predominant overriding factor,” strict scrutiny will apply
- What must a state prove for the plan to survive strict scrutiny?
 - A law narrowly tailored to serve a compelling state interest

WEB Addresses of Interest

- House Redistricting Home Page
 - http://house.louisiana.gov/H_Redistricting2011/
- Page for this Educational Presentation
 - http://house.louisiana.gov/H_Redistricting2011/default_RedistMeetings2011.htm

Key Contacts

House & Governmental Affairs Committee
225-342-2403

- [Shawn O'Brien](#) Secretary
225-342-2403
- [Patricia Lowrey – Dufour](#) Legislative Analyst
225-342-2396
- [Mark Mahaffey](#) Attorney
225-342-2598
- [Alfred Speer](#) Clerk of the House
225-342-7259
- [Dr. William Blair](#) Demographer
225-342-2591